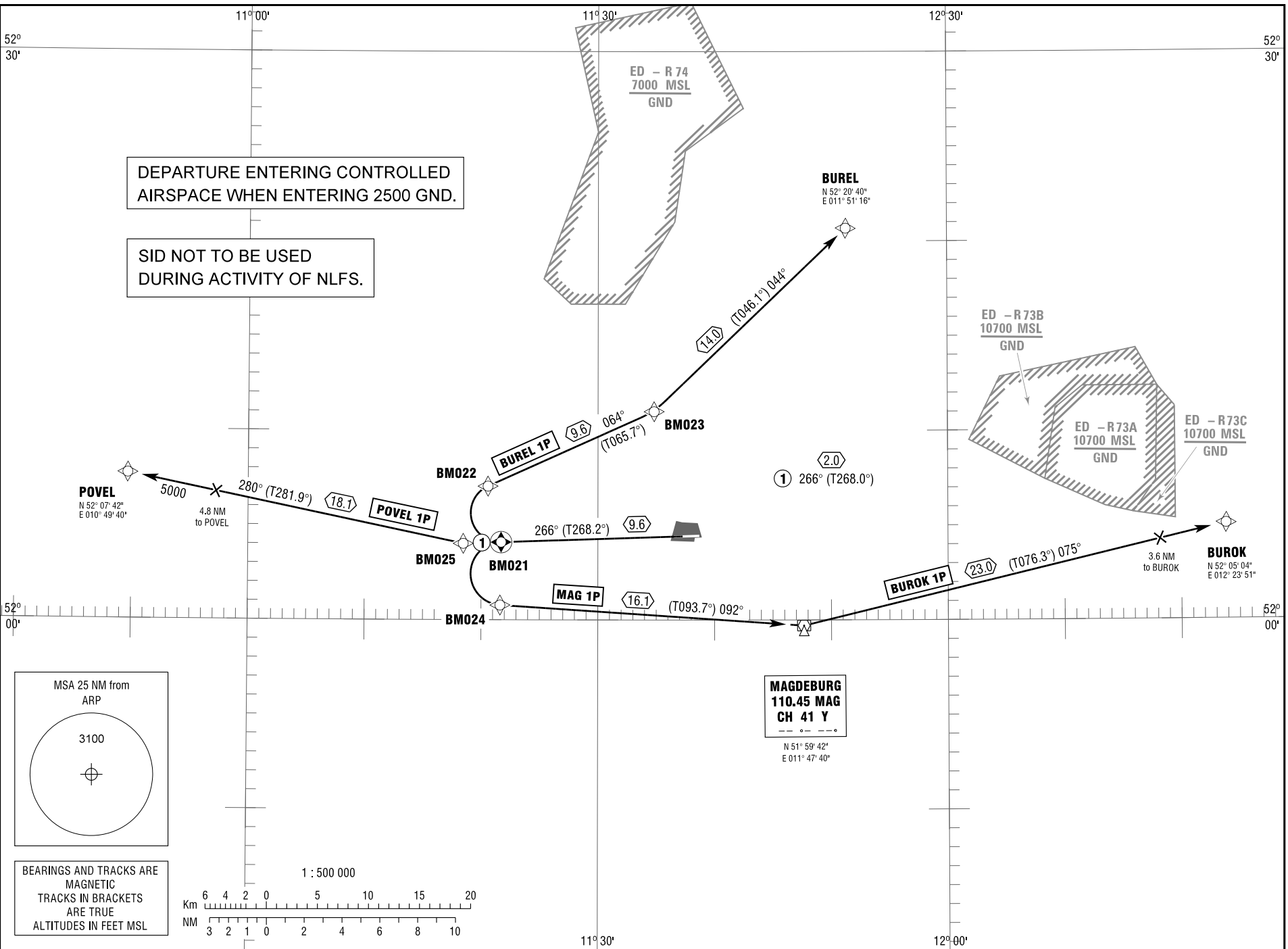


MAGDEBURG/CITY
RWY 27

MAGDEBURG INFO
BREITEN RADAR
119.300
123.225

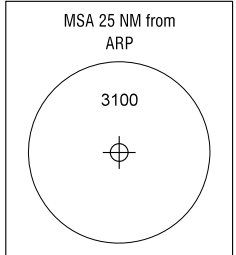
TRANSITION
ALTITUDE 5000
VAR 2° E

STANDARD DEPARTURE
CHART - INSTRUMENT
RNAV (GPS)

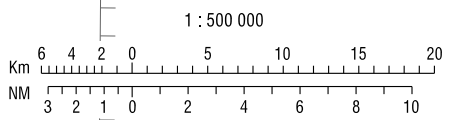


DEPARTURE ENTERING CONTROLLED
AIRSPACE WHEN ENTERING 2500 GND.

SID NOT TO BE USED
DURING ACTIVITY OF NLFS.



BEARINGS AND TRACKS ARE
MAGNETIC
TRACKS IN BRACKETS
ARE TRUE
ALTITUDES IN FEET MSL



Correction: Airport name.

STANDARD DEPARTURE
ROUTES – INSTRUMENT
RNAV (GPS) – (SID)

MAGDEBURG/CITY
RWY 27

Designator	Route	After Take-Off		Remarks
		Climb to	Contact	
1	2	3	4	5
BUREL 1P	BUREL ONE PAPA Bremen Radar On track 266° to BM021; RT, via BM022 on track 064° to BM023; LT, on track 044° to BUREL (Δ). RNAV(GPS): [A700+] - <u>BM021</u> [R] - BM022 - BM023[L] - BUREL.	4000 ft	Bremen Radar 123.225	Not to be used during activity of NLFS.
BUROK 1P	BUROK ONE PAPA On track 266° to BM021; LT, via BM024 on track 092° to MAG (Δ); LT, on track 075° to BUROK (Δ). RNAV(GPS): [A700+] - <u>BM021</u> [L] - BM024 - MAG[L] - BUROK.			1. Not to be used during activity of NLFS. 2. May not be available during times of military activity within ED-R73. ALTN Route by ATC.
MAG 1P	MAGDEBURG ONE PAPA On track 266° to BM021; LT, via BM024 on track 092° to MAG (Δ). RNAV(GPS): [A700+] - <u>BM021</u> [L] - BM024 - MAG.			Not to be used during activity of NLFS.
POVEL 1P	POVEL ONE PAPA On track 266° to BM025; RT, on track 280° to POVEL (Δ). RNAV(GPS): [A700+] - BM025[R] - POVEL.			Not to be used during activity of NLFS.

(Sample: BM021 fly-over way point)

Contact Bremen Radar immediately after take-off!