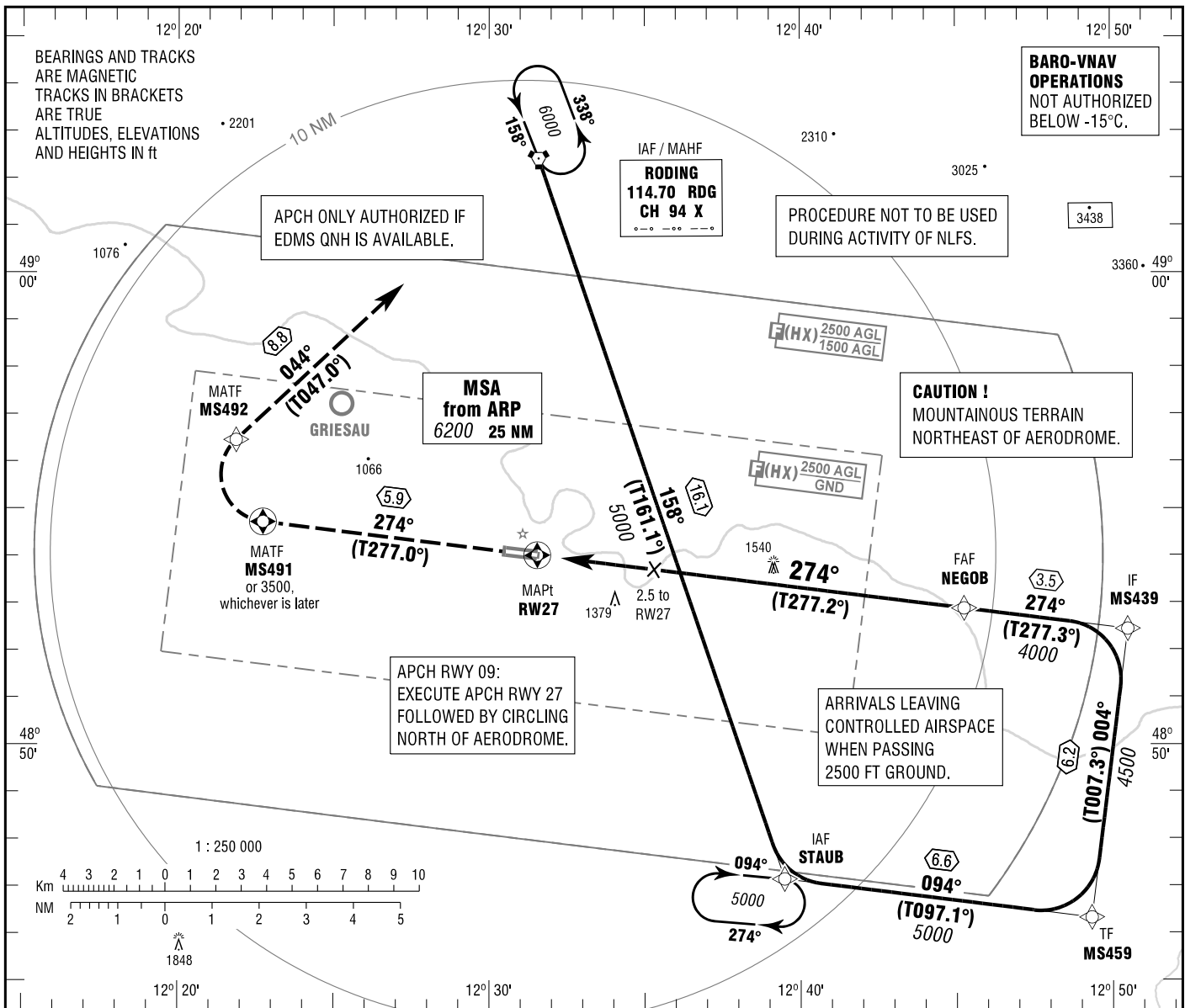


**INSTRUMENT
APPROACH
CHART - ICAO**

VAR 3° E
ELEV 1054
OCH RELATED TO
THR 27 ELEV 1045

ATIS 135.525
MÜNCHEN RADAR 132.550
INFO 127.150

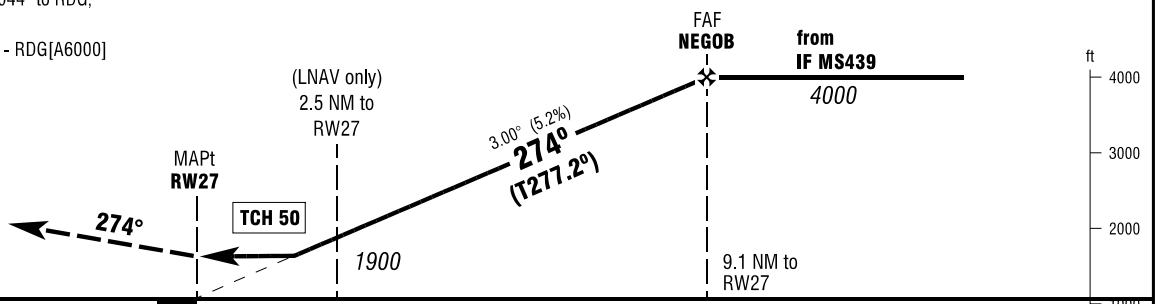
**STRAUBING
RNAV (GPS) RWY 27
EGNOS CH 66427 E27A**



MISSED APPROACH PROCEDURE

On track 274° to MS491 or 3500, whichever is later, RT, via MS492 on track 044° to RDG, continue to 6000.

MS491 - [A3500+; R] - MS492 - RDG[A6000]



1053 1045 PROFILE SCALE 1 : 250 000

OCA (OCH)	A	B		
LNAV	1630 (580)	1630 (580)		
LNAV / VNAV	1490 (450)	1510 (470)		
LPV	1630 (580)	1630 (580)		
CIRCLING*	1690 (640)	1690 (640)		

DIST THR / RW27	2	3	4	5	6	7	8	9
ALTITUDE	1740	2060	2370	2690	3010	3330	3650	3970

Timing not authorized for defining the MAPt.

GS	kt	80	100	120	140
NEGOB - RW27 (9.1 NM)	MIN:SEC	6:50	5:28	4:33	3:54
Rate of descent (5.2%)	ft / MIN	420	530	640	740

*NORTH OF AERODROME ONLY.

Correction: Variation, tracks, missed approach, OCH(H) values.