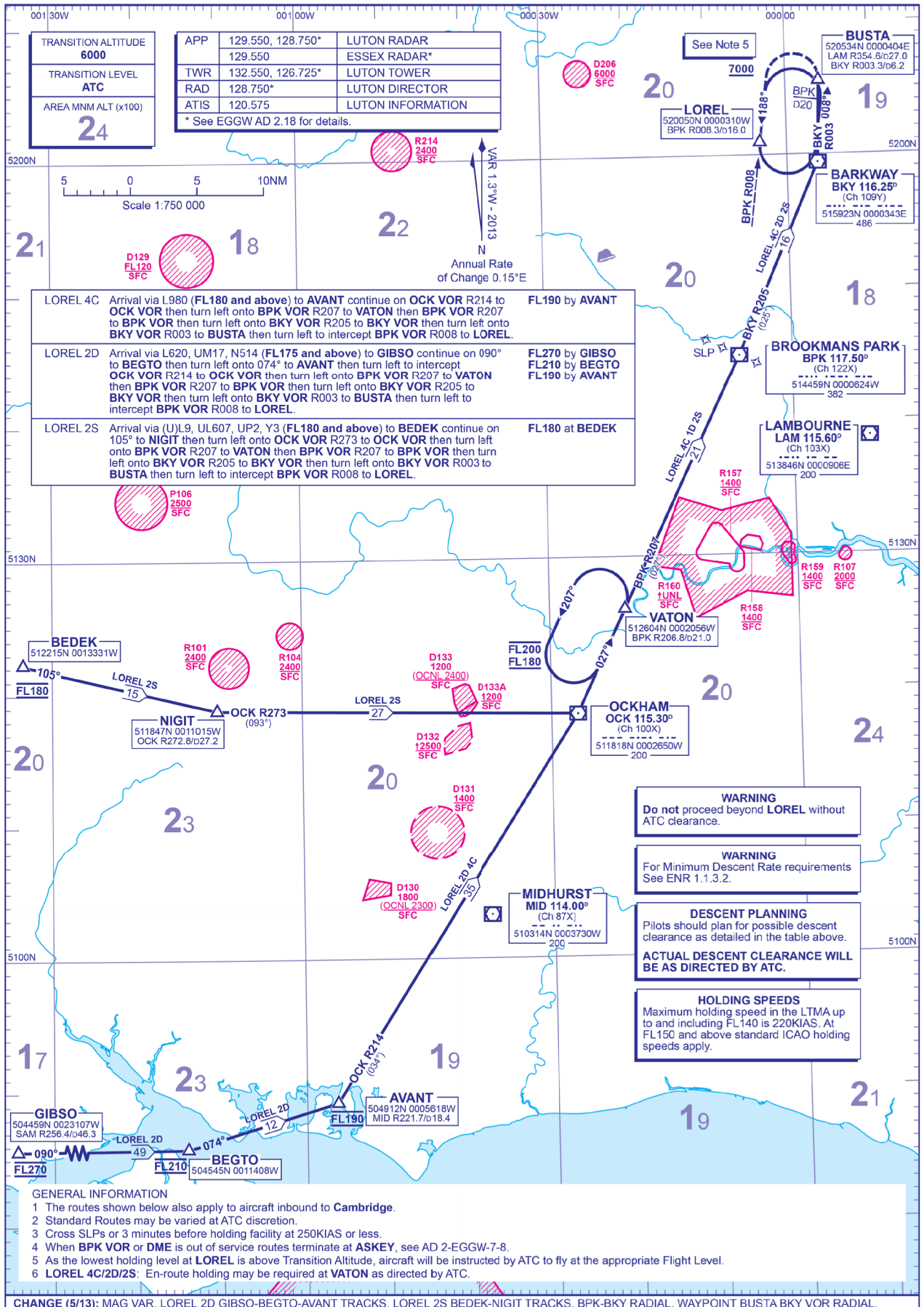


**STANDARD ARRIVAL CHART - INSTRUMENT (STAR) - ICAO**

DISTANCES IN NAUTICAL MILES  
BEARINGS, TRACKS AND RADIALS ARE MAGNETIC  
ALTITUDES AND ELEVATIONS ARE IN FEET

**LONDON LUTON via LOREL (south)**



AERO INFO DATE 1 FEB 13