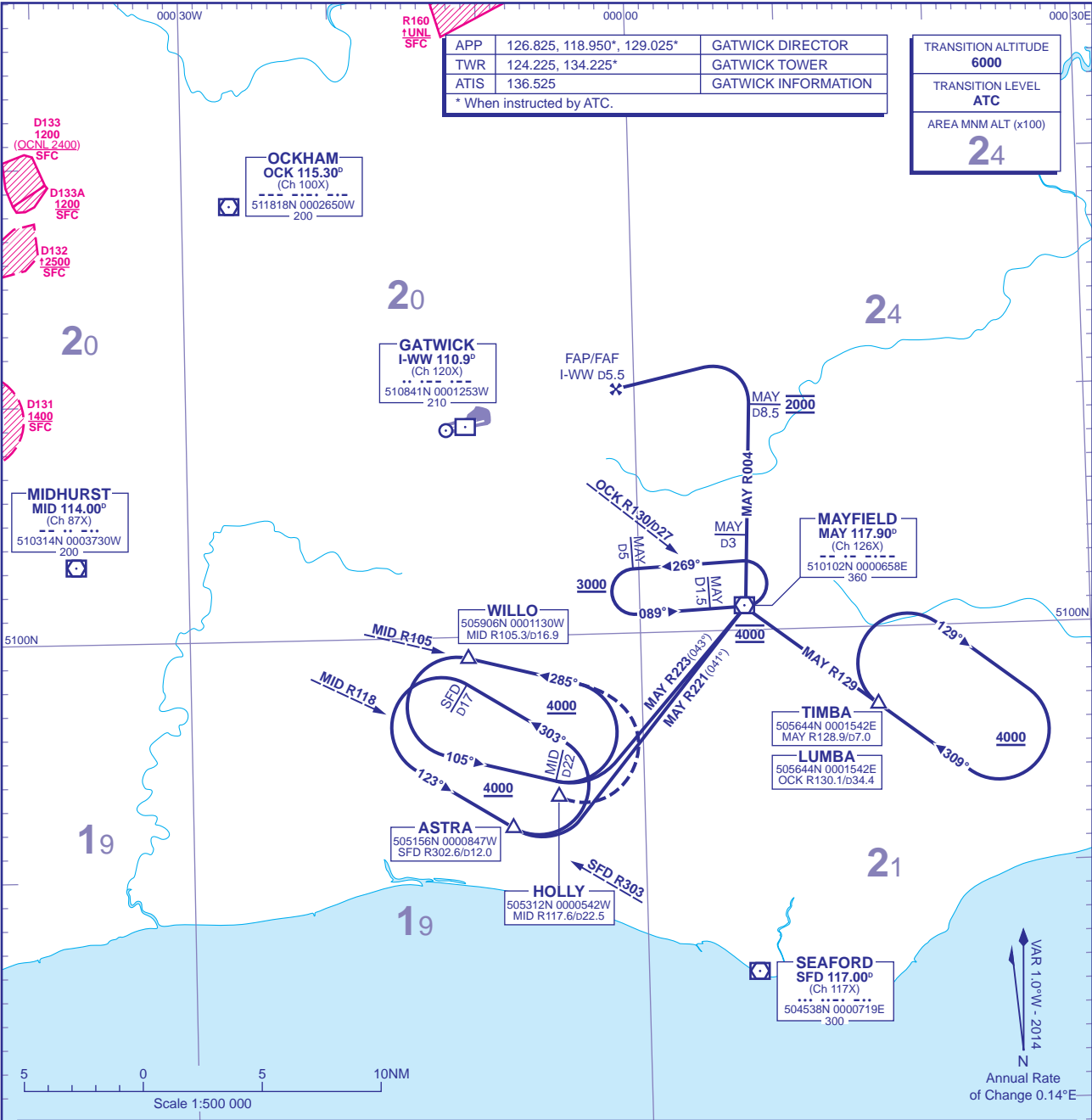


INITIAL APPROACH PROCEDURES  
ILS RWY 26L Without Radar Control

DISTANCES IN NAUTICAL MILES  
BEARINGS, TRACKS AND RADIALS ARE MAGNETIC  
ALTITUDES AND ELEVATIONS ARE IN FEET

LONDON  
GATWICK



When traffic is not being sequenced by Surveillance Radar, aircraft will be cleared from the holding areas to carry out the approach procedure to ILS RWY 26L as outlined below:		
TIMBA	When established inbound in the holding pattern (QDM 309°) commence descent to <b>4000</b> and proceed to <b>MAY VOR</b> . Leave <b>MAY VOR</b> on R004 descending to <b>2000</b> . At <b>MAY</b> D8.5 turn left to intercept the ILS localiser and continue ILS approach as detailed on Instrument Approach Chart.	ALT at which to leave; Descending to <b>4000</b>
LUMBA	When established inbound in the holding pattern (QDM 309°) commence descent to <b>4000</b> and proceed to <b>MAYFIELD</b> (OCK D27). Turn right to track 004° descending to <b>2000</b> . At <b>MAY</b> D8.5 turn left to intercept the ILS localiser and continue ILS approach as detailed on Instrument Approach Chart.	ALT at which to leave; Descending to <b>4000</b>
WILLO	Descend in the holding pattern to <b>4000</b> . Leave the outbound leg of the hold at <b>MID</b> D22 with a left turn to intercept R223 (043°) to <b>MAY VOR</b> . Leave <b>MAY</b> on VOR R004 descending to <b>2000</b> . At <b>MAY</b> D8.5 turn left to intercept the ILS localiser and continue ILS approach as detailed on Instrument Approach Chart.	ALT at which to leave; <b>4000</b>
ASTRA	Descend in the holding pattern to <b>4000</b> . Leave <b>ASTRA</b> with a left turn to intercept R221 (041°) to <b>MAY VOR</b> . Leave <b>MAY</b> on VOR R004 descending to <b>2000</b> . At <b>MAY</b> D8.5 turn left to intercept the ILS localiser and continue ILS approach as detailed on Instrument Approach Chart.	ALT at which to leave; <b>4000</b>
MAYFIELD	From <b>MAY</b> D1.5 on the inbound leg of the holding pattern, turn left to intercept and follow <b>MAY</b> R004. When established, after passing <b>MAY</b> D3 descend to <b>2000</b> . At <b>MAY</b> D8.5 turn left to intercept the ILS localiser and continue ILS approach as detailed on Instrument Approach Chart.	ALT at which to leave; <b>3000</b>
<b>GENERAL INFORMATION</b> 1 Missed Approach Procedures are detailed on the Instrument Approach Charts. 2 These initial approach procedures are designed for manoeuvring speeds up to 240KT TAS and assume aircraft can maintain a descent of approximately 300 per nautical mile. 3 Change to altimeter setting for landing when cleared to <b>2000</b> or below.		
<b>CHANGE (3/14):</b> MAG VAR. RADIALS. TRACKS.		