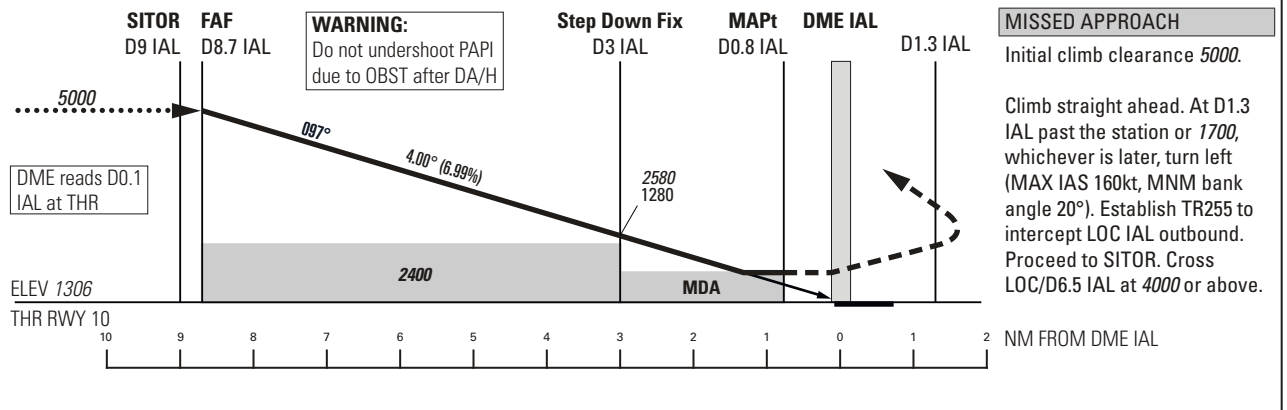
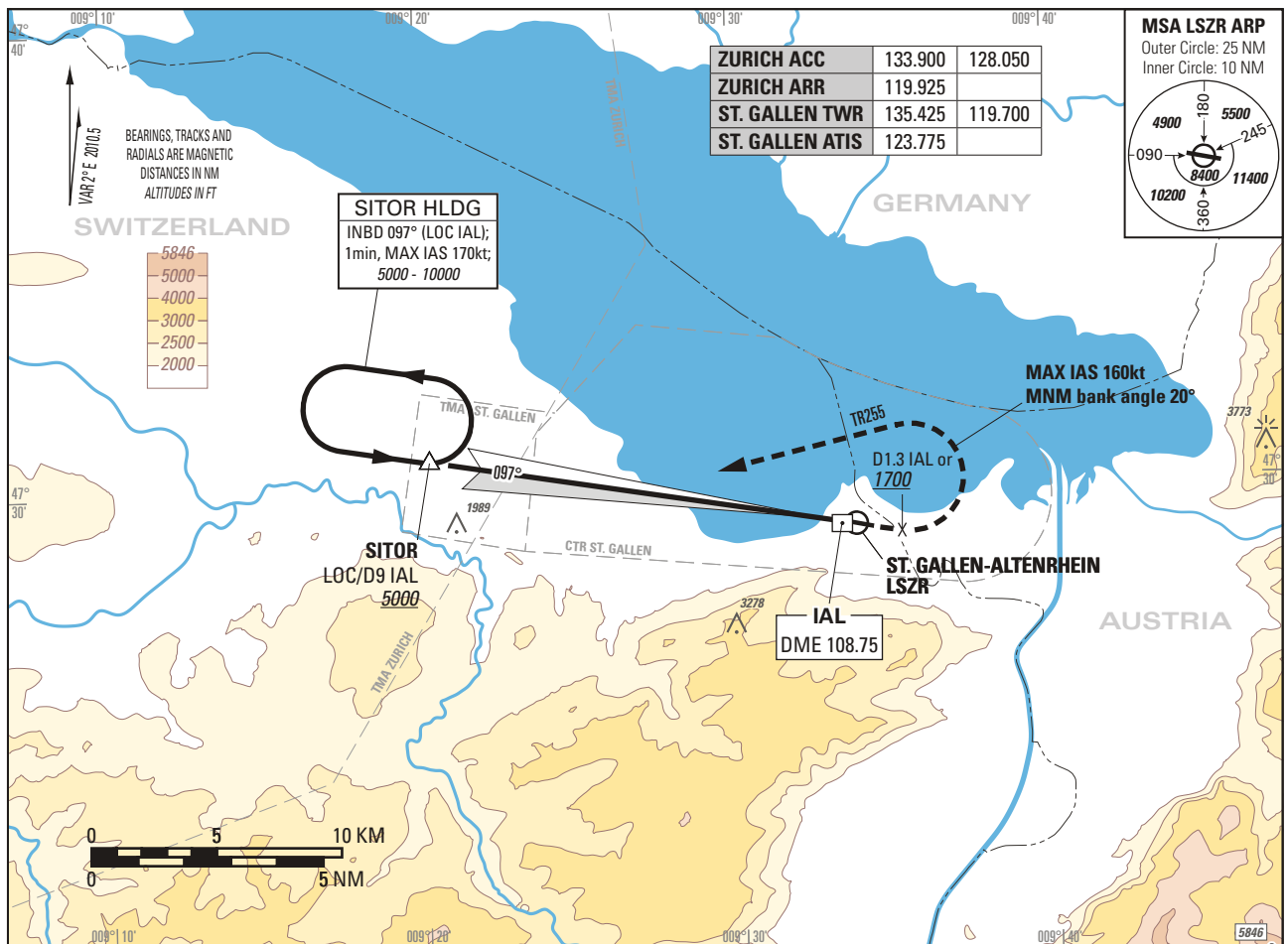


Instrument Approach Chart (IAC) - ICAO

ELEV 1306ft

TRANSITION LEVEL by ATC
TRANSITION ALTITUDE 5000

ST. GALLEN-ALTENRHEIN LSZR
LOC RWY 10, 0.8° OFFSET LEFT
ACFT CAT A/B/C



OBSTACLE CLEARANCE ALTITUDE (HEIGHT) / OCA (H)	A	B	C
STRAIGHT-IN APPROACH	1650 (350)		
CIRCLING ¹⁾	2170 (870)		2270 (970 ²⁾)
MINIMUM DESCENT ALTITUDE (HEIGHT) / MDA(H)	A	B	C
STRAIGHT-IN APPROACH	1806 (500)		

ROD	GS kt	80	100	120	140	160	180
	FT/MIN	567	708	849	991	1133	1274

NOTE
¹⁾ Circling north of AP only.
²⁾ MAX IAS 160kt due airspace.

REMARK
Runway 10 is a non-instrument runway.

CAUTION
- 0.2NM before THR 10 Visual Segment Surface (VSS) penetrated by trees up to 1380ft.
- This is not a standard approach angle.

DME IAL	8.7	8	7	6	5	4	3	2	1
DIST THR	8.6	7.9	6.9	5.9	4.9	3.9	2.9	1.9	0.9
ALT FT	5000	4710	4280	3860	3430	3010	2580	2160	1730

COR: TWR FREQ, new layout

THIS PAGE INTENTIONALLY LEFT BLANK