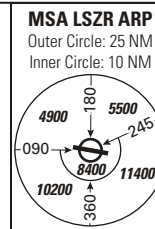


STANDARD INSTRUMENT DEPARTURE CHART  
(SID) - ICAO

TRANSITION LEVEL by ATC  
TRANSITION ALTITUDE 5000

ST. GALLEN-ALTENRHEIN LSZR  
SID RWY 28 NON RNAV



**KPT**  
DVOR 109.6

**NOTE for KPT 3V:**  
Expect bad VOR signal quality as well as low field strength for VOR and DME KPT at 8000 ft and below.

**CLOSE-IN OBST:** Left and right of track up to 1420ft shortly after end of RWY 28.

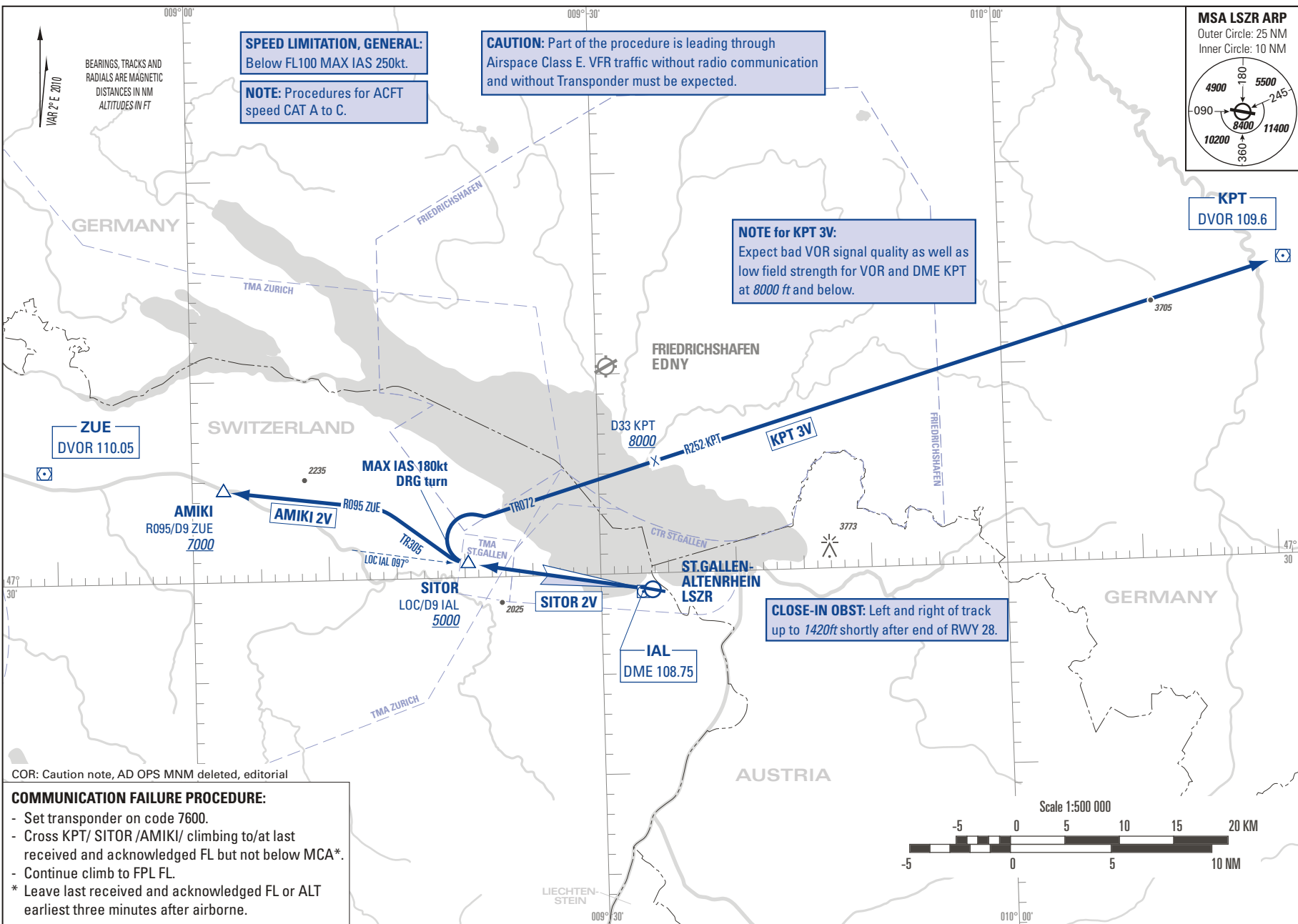
**CAUTION:** Part of the procedure is leading through Airspace Class E. VFR traffic without radio communication and without Transponder must be expected.

**SPEED LIMITATION, GENERAL:**  
Below FL100 MAX IAS 250kt.

**NOTE:** Procedures for ACFT speed CAT A to C.

BEARINGS, TRACKS AND RADIALS ARE MAGNETIC  
DISTANCES IN NM  
ALTITUDES IN FT

MAR 2<sup>e</sup> E 2010



COR: Caution note, AD OPS MNM deleted, editorial

**COMMUNICATION FAILURE PROCEDURE:**

- Set transponder on code 7600.
- Cross KPT/ SITOR /AMIKI/ climbing to/at last received and acknowledged FL but not below MCA\*.
- Continue climb to FPL FL.
- \* Leave last received and acknowledged FL or ALT earliest three minutes after airborne.

THIS PAGE INTENTIONALLY LEFT BLANK