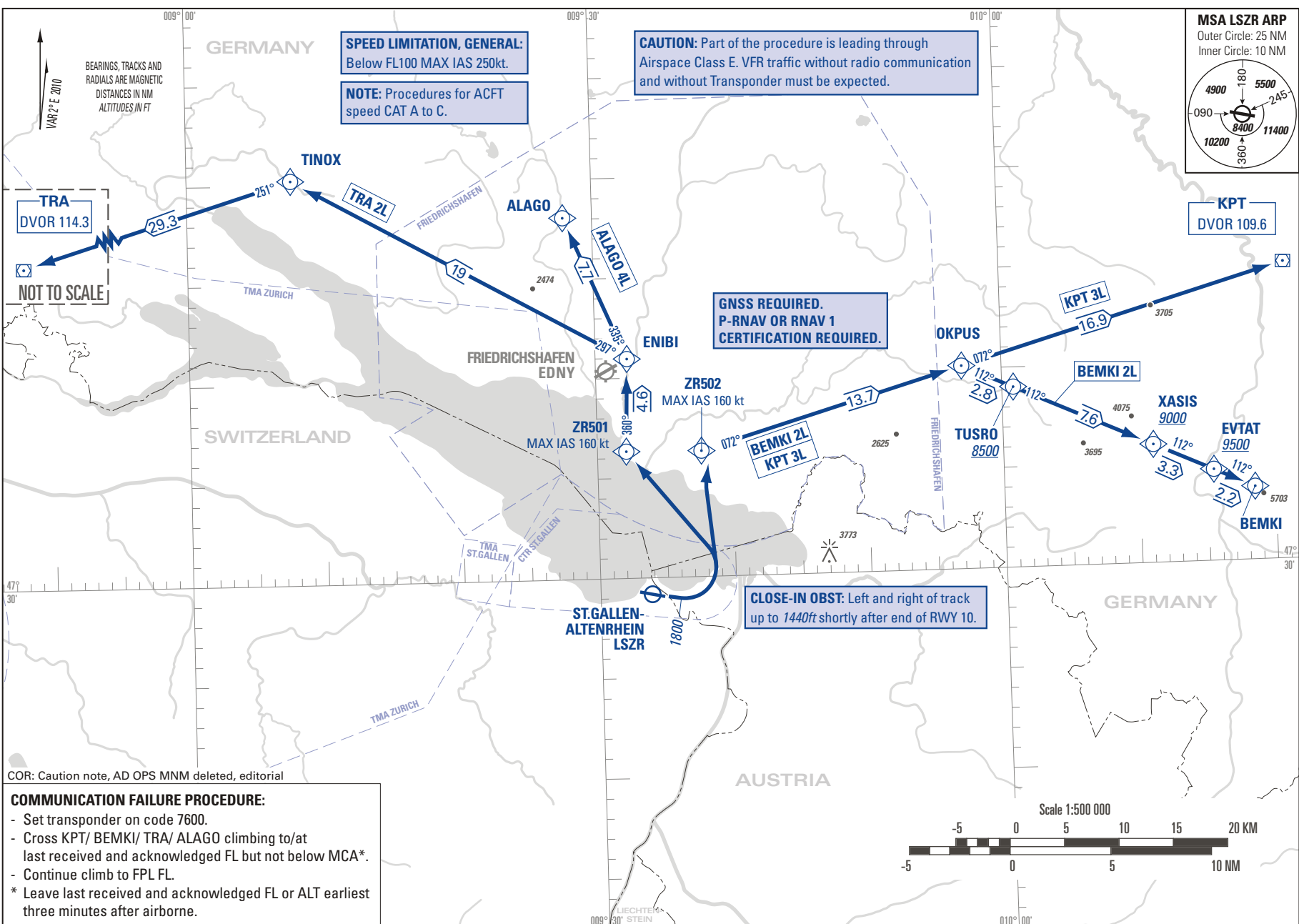


STANDARD INSTRUMENT DEPARTURE CHART  
(SID) - ICAO

TRANSITION LEVEL by ATC  
TRANSITION ALTITUDE 5000

ST. GALLEN-ALTENRHEIN LSZR  
SID RWY 10 RNAV 1



**CAUTION:** Part of the procedure is leading through  
Airspace Class E. VFR traffic without radio communication  
and without Transponder must be expected.

**SPEED LIMITATION, GENERAL:**  
Below FL100 MAX IAS 250kt.

**NOTE:** Procedures for ACFT  
speed CAT A to C.

**GNSS REQUIRED.**  
P-RNAV OR RNAV 1  
CERTIFICATION REQUIRED.

**CLOSE-IN OBST:** Left and right of track  
up to 1440ft shortly after end of RWY 10.

BEARINGS, TRACKS AND  
RADIALS ARE MAGNETIC  
DISTANCES IN NM  
ALTITUDES IN FT

VAR 2° E 2010

**TRA**  
DVOR 114.3  
**NOT TO SCALE**

COR: Caution note, AD OPS MNM deleted, editorial

**COMMUNICATION FAILURE PROCEDURE:**

- Set transponder on code 7600.
- Cross KPT/ BEMKI/ TRA/ ALAGO climbing to/at last received and acknowledged FL but not below MCA\*.
- Continue climb to FPL FL.
- \* Leave last received and acknowledged FL or ALT earliest three minutes after airborne.

THIS PAGE INTENTIONALLY LEFT BLANK