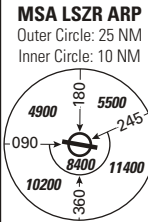
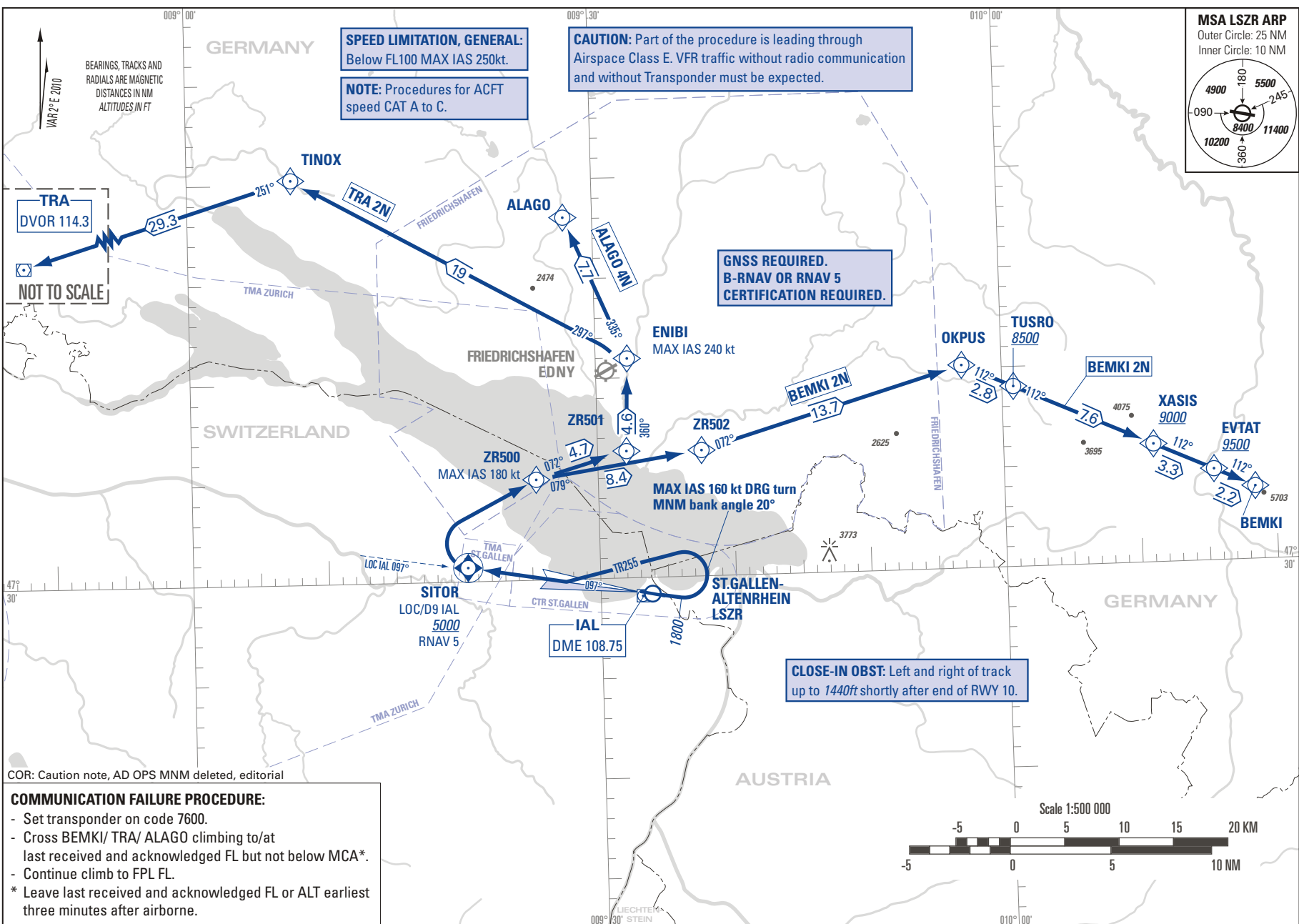


STANDARD INSTRUMENT DEPARTURE CHART
(SID) - ICAO

TRANSITION LEVEL by ATC
TRANSITION ALTITUDE 5000

ST. GALLEN-ALTENRHEIN LSZR
SID RWY 10 RNAV 5



SPEED LIMITATION, GENERAL:
Below FL100 MAX IAS 250kt.
NOTE: Procedures for ACFT speed CAT A to C.

CAUTION: Part of the procedure is leading through Airspace Class E. VFR traffic without radio communication and without Transponder must be expected.

GNSS REQUIRED.
B-RNAV OR RNAV 5
CERTIFICATION REQUIRED.

CLOSE-IN OBST: Left and right of track up to 1440ft shortly after end of RWY 10.

COR: Caution note, AD OPS MNM deleted, editorial

COMMUNICATION FAILURE PROCEDURE:

- Set transponder on code 7600.
- Cross BEMKI/ TRA/ ALAGO climbing to/at last received and acknowledged FL but not below MCA*.
- Continue climb to FPL FL.

* Leave last received and acknowledged FL or ALT earliest three minutes after airborne.

THIS PAGE INTENTIONALLY LEFT BLANK