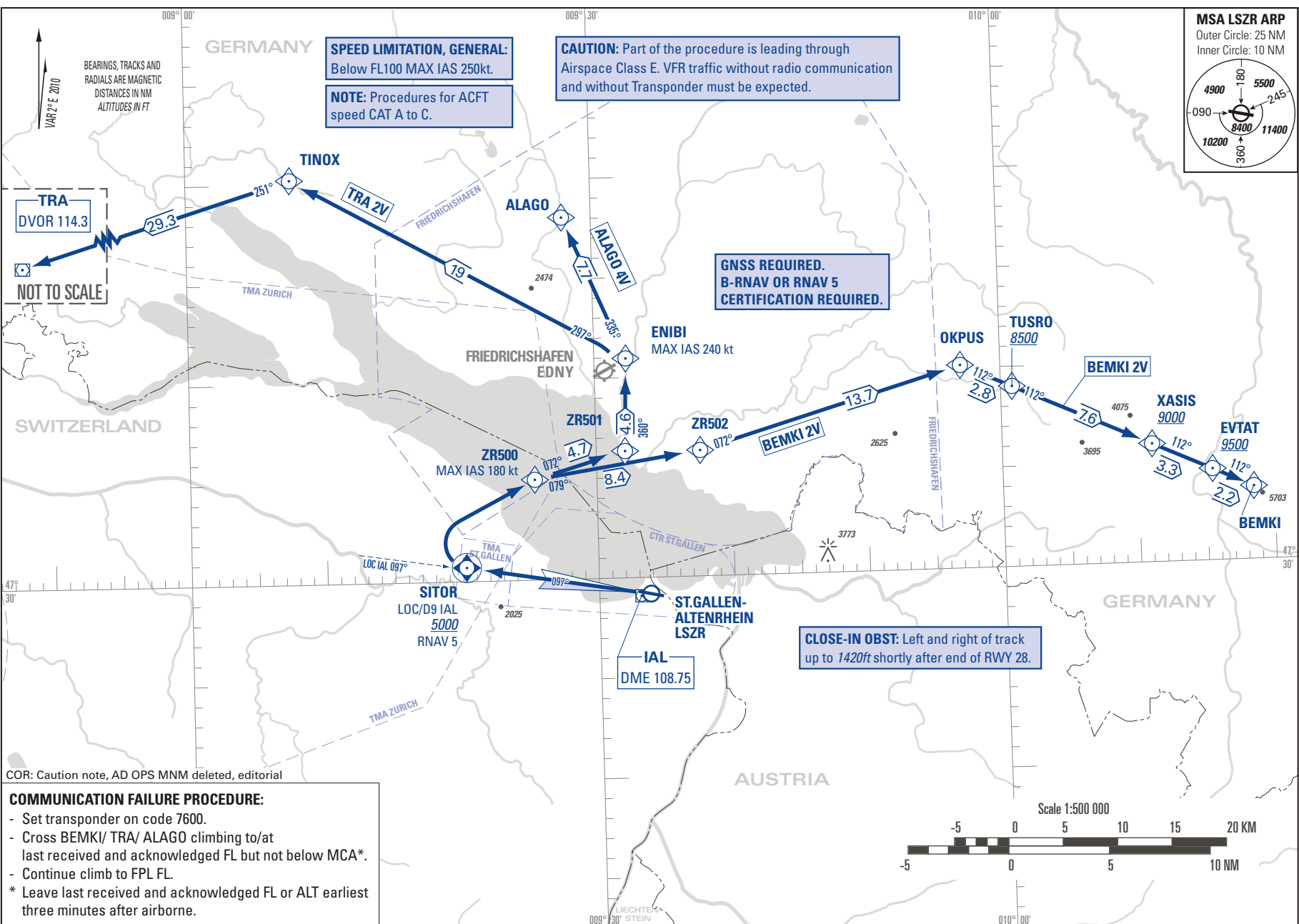


STANDARD INSTRUMENT DEPARTURE CHART
(SID) - ICAO

TRANSITION LEVEL by ATC
TRANSITION ALTITUDE 5000

ST. GALLEN-ALTENRHEIN LSZR
SID RWY 28 RNAV 5



SPEED LIMITATION, GENERAL:
Below FL100 MAX IAS 250kt.

NOTE: Procedures for ACFT speed CAT A to C.

CAUTION: Part of the procedure is leading through Airspace Class E. VFR traffic without radio communication and without Transponder must be expected.

GNSS REQUIRED.
B-RNAV OR RNAV 5
CERTIFICATION REQUIRED.

CLOSE-IN OBST: Left and right of track up to 1420ft shortly after end of RWY 28.

COR: Caution note, AD OPS MNM deleted, editorial

COMMUNICATION FAILURE PROCEDURE:

- Set transponder on code 7600.
- Cross BEMKI/ TRA/ ALAGO climbing to/at last received and acknowledged FL but not below MCA*.
- Continue climb to FPL FL.
- * Leave last received and acknowledged FL or ALT earliest three minutes after airborne.

BEARINGS, TRACKS AND RADIALS ARE MAGNETIC
DISTANCES IN NM
ALTITUDES IN FT

VAR 2° E 2010

TRA DVOR 114.3
NOT TO SCALE

THIS PAGE INTENTIONALLY LEFT BLANK