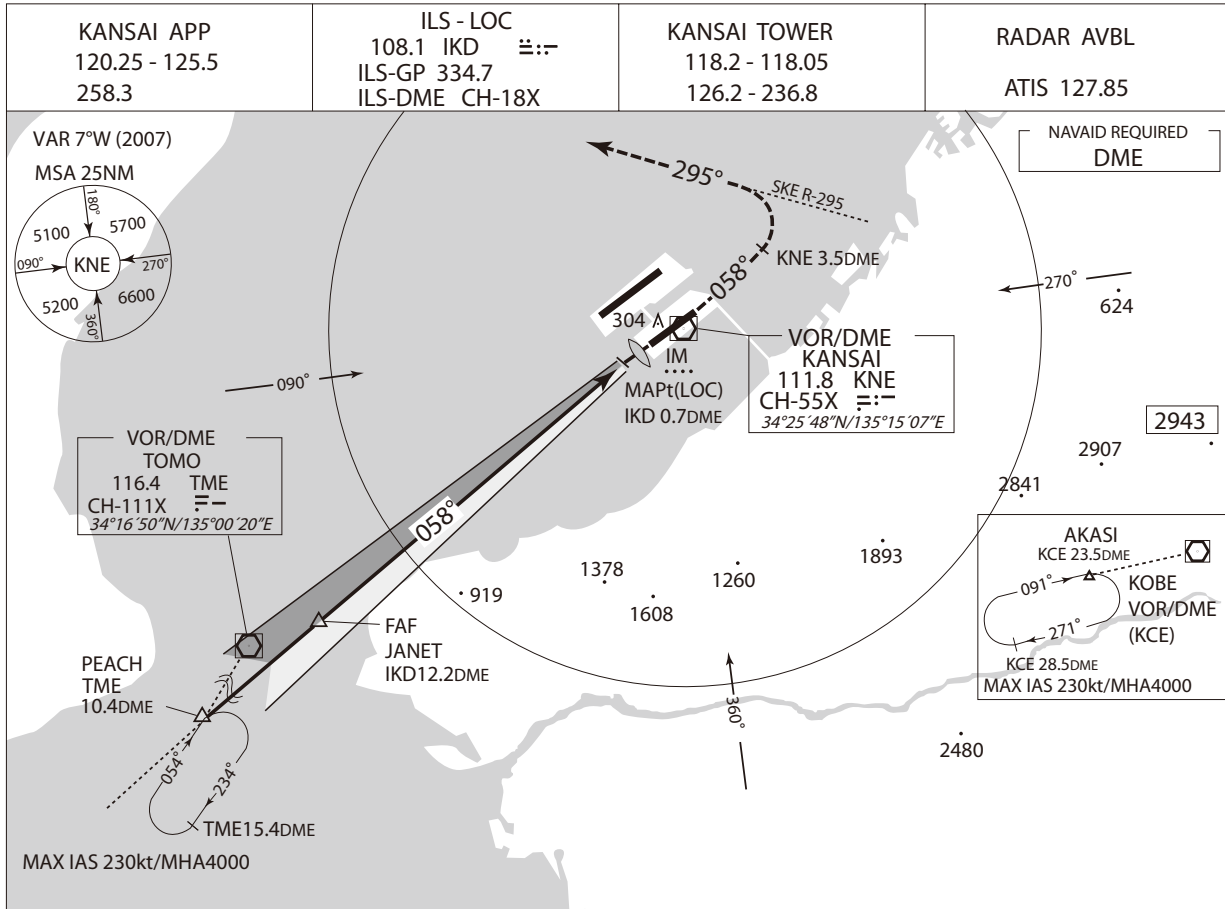


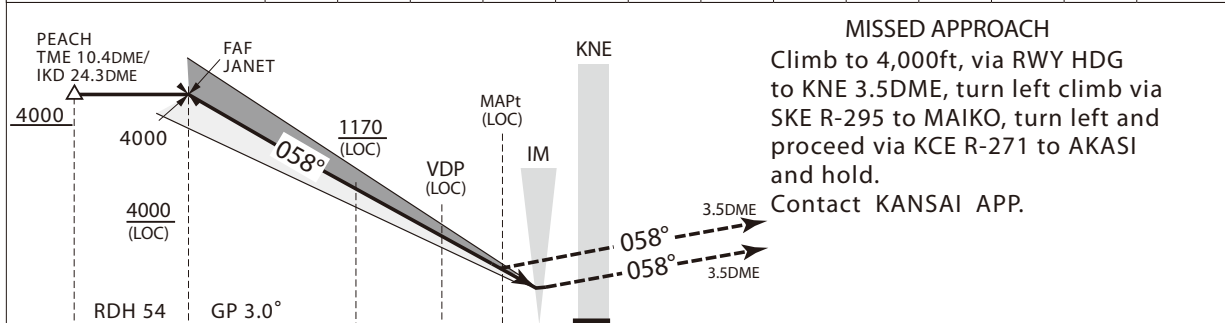
INSTRUMENT APPROACH CHART

RJBB / KANSAI INTL

ILS Y or LOC Y RWY06R CAT II



NM to IKD	FAF	11	10	9	8	7	6	5	4	3	2	MAPt
ALT(3.0° APCH Path)	-	3505	3187	2868	2550	2232	1913	1595	1276	958	639	—



DME to IKD	12.2	6.8	1.3	0.7	0.3							
NM to RWY06R	12.0	6.6	1.1	0.5	0.1	0						

MINIMA		THR elev. 7			AD elev. 17				
CAT	CAT II			CAT I		LOC		CIRCLING	
	DA(H)	RA	RVR	DA(H)	RVR/CMV	MDA(H)	RVR/CMV	MDA(H)	VIS
A	107 (100)	100	350	207 (200)	550	390 (383)	900	610 (593)	1600
B							1000		2400
C							1400		3200
D/DL									

Circling to North side of RWY only.  
DH150(DA157)-RA150 for the operators on operational evaluation phases prior to CAT II operations.