

STANDARD DEPARTURE CHART-INSTRUMENT

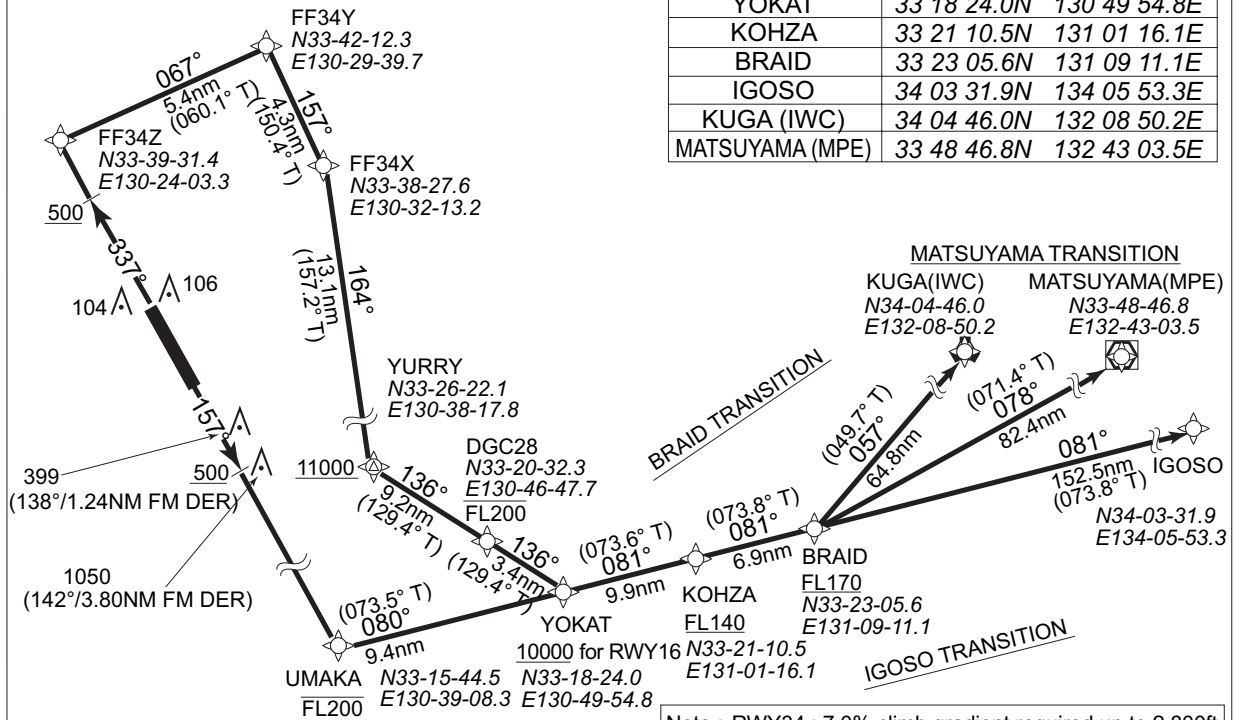
RJFF / FUKUOKA

RNAV SID and TRANSITION

YOKAT TWO RNAV DEPARTURE		RNAV 1
Note 1) DME/DME/IRU or GNSS required. ※The aircraft equipped with only DME/DME/IRU must be able to update its position without delay at the starting point of take-off roll. 2) RADAR service required.	Critical DME	RWY16 : DGC "DER~5.4nm FM DER" IKE "DER~5.4nm FM DER" RWY34 : DGC "3.5nm~2.2nm to FF34Z" IKE "3.5nm to FF34Z~FF34X" TTE "2.2nm to FF34Z~FF34X"
	DME GAP	RWY34 : DER~0.9nm FM DER
	Inappropriate Nav aids	See AD1.1 6.10.3. Inappropriate NAVAIDs for RNAV1

VAR 7°W (2008)

DESIGNATION	COORDINATES
FF34Z	33 39 31.4N 130 24 03.3E
FF34Y	33 42 12.3N 130 29 39.7E
FF34X	33 38 27.6N 130 32 13.2E
YURRY	33 26 22.1N 130 38 17.8E
UMAKA	33 15 44.5N 130 39 08.3E
DGC28	33 20 32.3N 130 46 47.7E
YOKAT	33 18 24.0N 130 49 54.8E
KOHZA	33 21 10.5N 131 01 16.1E
BRAID	33 23 05.6N 131 09 11.1E
IGOSO	34 03 31.9N 134 05 53.3E
KUGA (IWC)	34 04 46.0N 132 08 50.2E
MATSUYAMA (MPE)	33 48 46.8N 132 43 03.5E



Note : RWY34 : 7.0% climb gradient required up to 2,800ft.
RWY16 : 5.8% climb gradient required up to 1,100ft.

YOKAT TWO RNAV DEPARTURE

RWY34 : Climb on heading 337°M at or above 500ft, direct to FF34Z, to FF34Y, to FF34X, to YURRY at or above 11,000ft, to DGC28 at or below FL200, to YOKAT.
 RWY16 : Climb on heading 157°M at or above 500ft, direct to UMAKA at or below FL200, to YOKAT at or above 10,000ft.

IGOSO TRANSITION

From YOKAT, to KOHZA at or above FL140, to BRAID at or above FL170, to IGOSO.

BRAID TRANSITION

From YOKAT, to KOHZA at or above FL140, to BRAID at or above FL170, to KUGA(IWC).

MATSUYAMA TRANSITION

From YOKAT, to KOHZA at or above FL140, to BRAID at or above FL170, to MATSUYAMA(MPE).

Note : RWY34 : 7.0% climb gradient required up to 2,800ft.
RWY16 : 5.8% climb gradient required up to 1,100ft.