

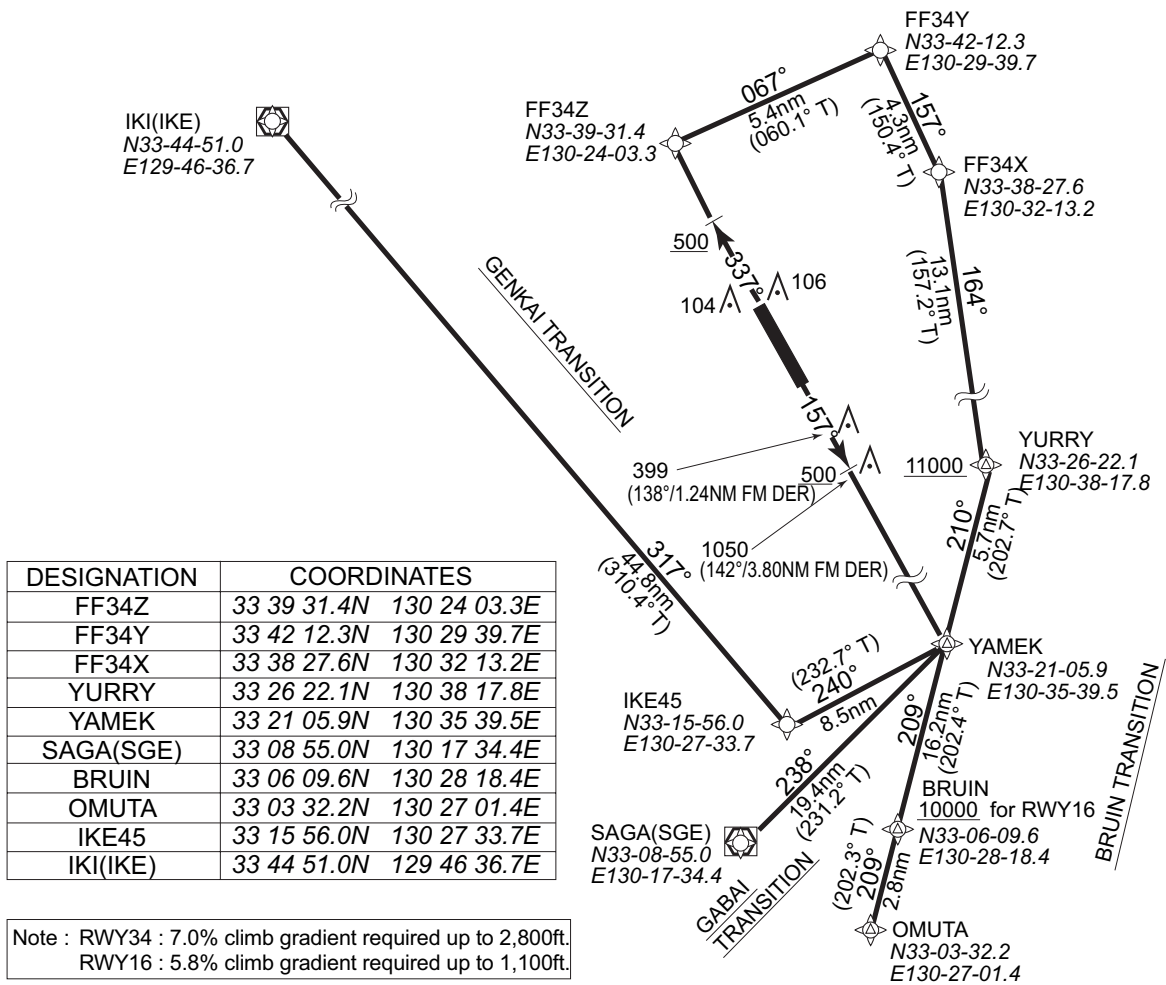
STANDARD DEPARTURE CHART-INSTRUMENT

RJFF / FUKUOKA

RNAV SID and TRANSITON

KURUME TWO RNAV DEPARTURE		RNAV 1
Note 1) DME/DME/IRU or GNSS required. ※The aircraft equipped with only DME/DME/IRU must be able to update its position without delay at the starting point of take-off roll. 2) RADAR service required.	Critical DME	RWY16 : DGC "DER~5.4nm FM DER" IKE "DER~5.4nm FM DER" RWY34 : DGC "3.5nm~2.2nm to FF34Z" IKE "3.5nm to FF34Z~FF34X" TTE "2.2nm to FF34Z~FF34X"
	DME GAP	RWY34 : DER~0.9nm FM DER
	Inappropriate Nav aids	See AD1.1 6.10.3. Inappropriate NAVAIDs for RNAV1

VAR 7°W (2008)



KURUME TWO RNAV DEPARTURE

RWY34 : Climb on heading 337°M at or above 500ft, direct to FF34Z, to FF34Y, to FF34X, to YURRY at or above 11,000ft, to YAMEK.

RWY16 : Climb on heading 157°M at or above 500ft, direct to YAMEK.

GABAI TRANSITION

From YAMEK, to SAGA(SGE).

BRUIN TRANSITION

From YAMEK, to BRUIN, to OMUTA.

GENKAI TRANSITION

From YAMEK, to IKE45, to IKE(IKE).

Note : RWY34 : 7.0% climb gradient required up to 2,800ft.

RWY16 : 5.8% climb gradient required up to 1,100ft.