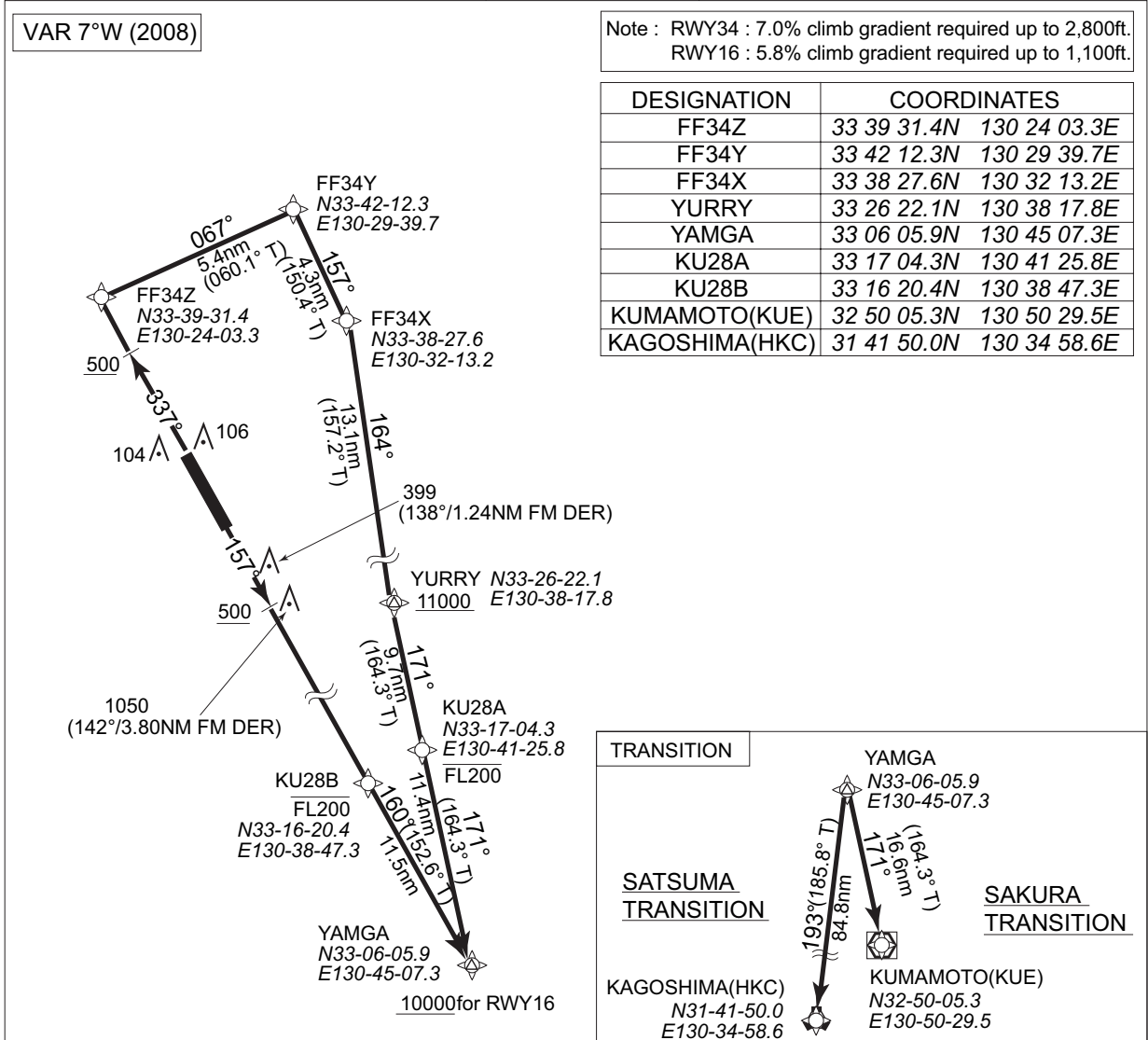


STANDARD DEPARTURE CHART -INSTRUMENT

RJFF / FUKUOKA

RNAV SID and TRANSITION

MORIO TWO RNAV DEPARTURE		RNAV 1
Note 1 ) DME/DME/IRU or GNSS required. ※The aircraft equipped with only DME/DME/IRU must be able to update its position without delay at the starting point of take-off roll. 2 ) RADAR service required.	Critical DME	RWY16 : DGC "DER~5.4nm FM DER" IKE "DER~5.4nm FM DER" RWY34 : DGC "3.5nm~2.2nm to FF34Z" IKE "3.5nm to FF34Z~FF34X" TTE "2.2nm to FF34Z~FF34X"
	DME GAP	RWY34 : DER~0.9nm FM DER
	Inappropriate Nav aids	See AD1.1 6.10.3 Inappropriate NAVAIDs for RNAV1



**MORIO TWO RNAV DEPARTURE**  
 RWY34 : Climb on heading 337°M at or above 500ft, direct to FF34Z, to FF34Y, to FF34X, to YURRY at or above 11,000ft, to KU28A at or below FL200, to YAMGA.  
 RWY16 : Climb on heading 157°M at or above 500ft, direct to KU28B at or below FL200, to YAMGA at or above 10,000ft.

**SAKURA TRANSITION**  
 From YAMGA, to KUMAMOTO(KUE).

**SATSUMA TRANSITION**  
 From YAMGA, to KAGOSHIMA(HKC).

Note : RWY34 : 7.0% climb gradient required up to 2,800ft.  
RWY16 : 5.8% climb gradient required up to 1,100ft.