

STANDARD DEPARTURE CHART-INSTRUMENT

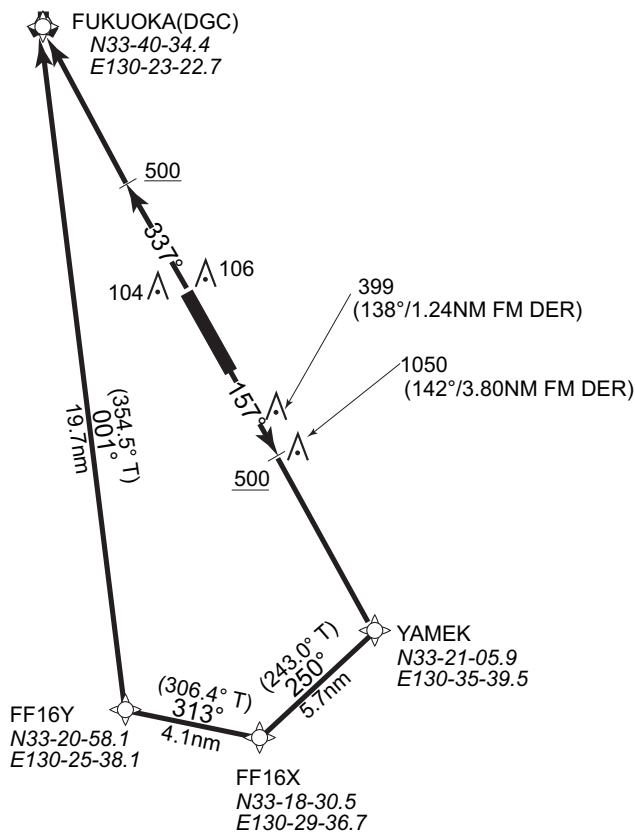
RJFF / FUKUOKA

RNAV SID and TRANSITION

HAKATA TWO RNAV DEPARTURE		RNAV 1
Note 1) DME/DME/IRU or GNSS required. ※The aircraft equipped with only DME/DME/IRU must be able to update its position without delay at the starting point of take-off roll. 2) RADAR service required.	Critical DME	RWY16 :DGC "DER~5.4nm FM DER" IKE "DER~5.4nm FM DER" RWY34 :DGC "3.5nm~2.2nm to FF34Z" IKE "3.5nm to FF34Z~FF34X" TTE "2.2nm to FF34Z~FF34X"
	DME GAP	RWY34 :DER~0.9nm FM DER
	Inappropriate Nav aids	See AD1.1 6.10.3. Inappropriate NAVAIDs for RNAV1

VAR 7°W (2008)

DESIGNATION	COORDINATES
YAMEK	33 21 05.9N 130 35 39.5E
FF16X	33 18 30.5N 130 29 36.7E
FF16Y	33 20 58.1N 130 25 38.1E
FUKUOKA(DGC)	33 40 34.4N 130 23 22.7E



Note : RWY16 : 5.8% climb gradient required up to 1,100ft.

HAKATA TWO RNAV DEPARTURE

RWY34 : Climb on heading 337°M at or above 500ft, direct to FUKUOKA (DGC).

RWY16 : Climb on heading 157°M at or above 500ft, direct to YAMEK, to FF16X, to FF16Y, to FUKUOKA (DGC).

Note : RWY16 : 5.8% climb gradient required up to 1,100ft.