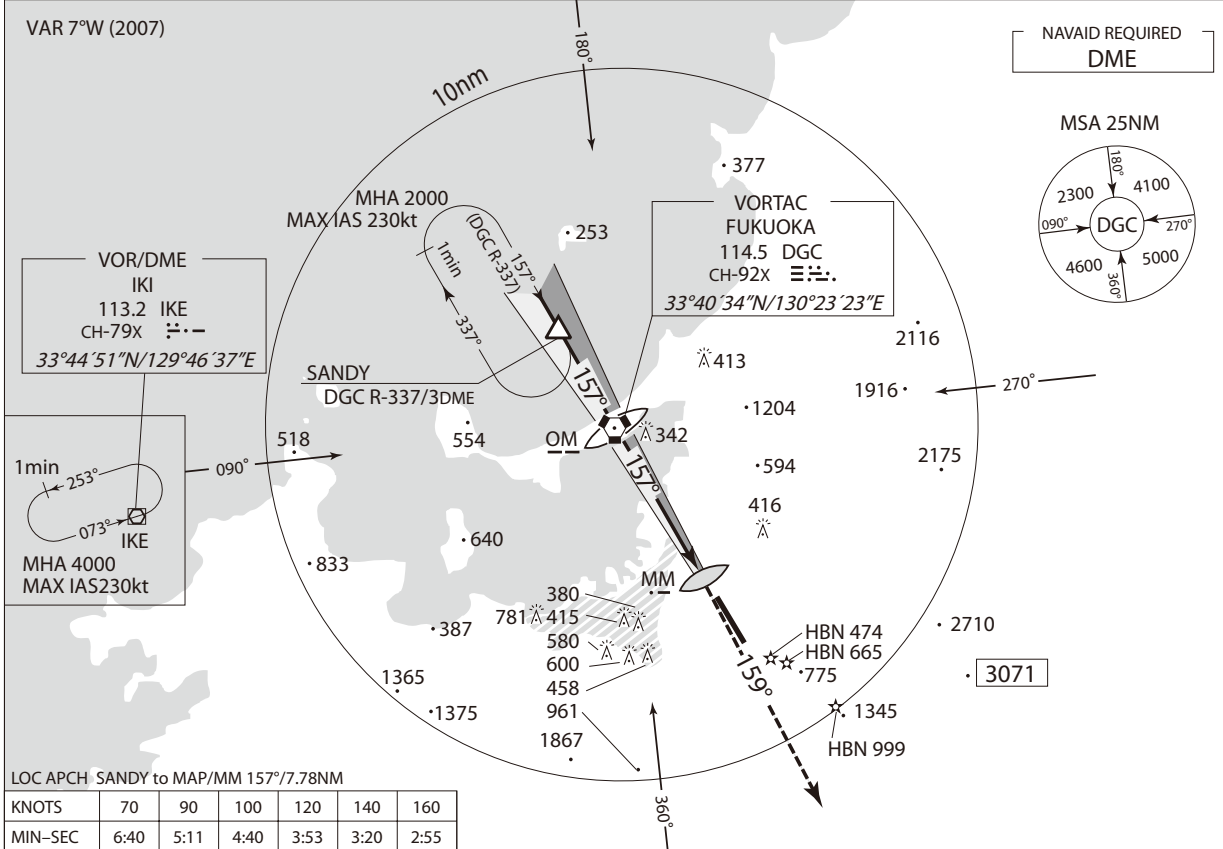


INSTRUMENT APPROACH CHART

RJFF / FUKUOKA

ILS or LOC RWY 16

FUKUOKA APP 119.1 – 119.65 – 120.7 261.2 – 270.8	ILS-LOC 111.7 IFO ILS-GP 333.5	FUKUOKA TOWER 118.4 – 126.2 236.8	RADAR AVBL ATIS 127.2
--	--------------------------------------	---	--------------------------



MISSED APPROACH
At DA, climb to 6,000ft via DGC
R-159 to YAMEK, turn right to intercept and proceed via IKE R-127 to IKE VOR/DME and hold.
Cross YAMEK at or above 5,000ft, cross IKE R-127/37DME at 6,000ft.
Contact FUKUOKA APP.

MISSED APCH climb gradient MNM 5.0%

MINIMA		THR elev. 15		AD elev. 30		
CAT	CAT I		LOC		CIRCLING	
	DA(H)	RVR/CMV	MDA(H)	RVR/CMV	MDA(H)	VIS
A	287 (272)	650	660 (645)	1000	830 (800)	1600
B				1200		
C				1600	1020 (990)	2400
D				1600	1030 (1000)	3200

Circling to West side of RWY only.
Missed APCH climb gradient of 5.0% up to 1,000ft.
MINIMA with Missed APCH climb gradient of 2.5% are not established.