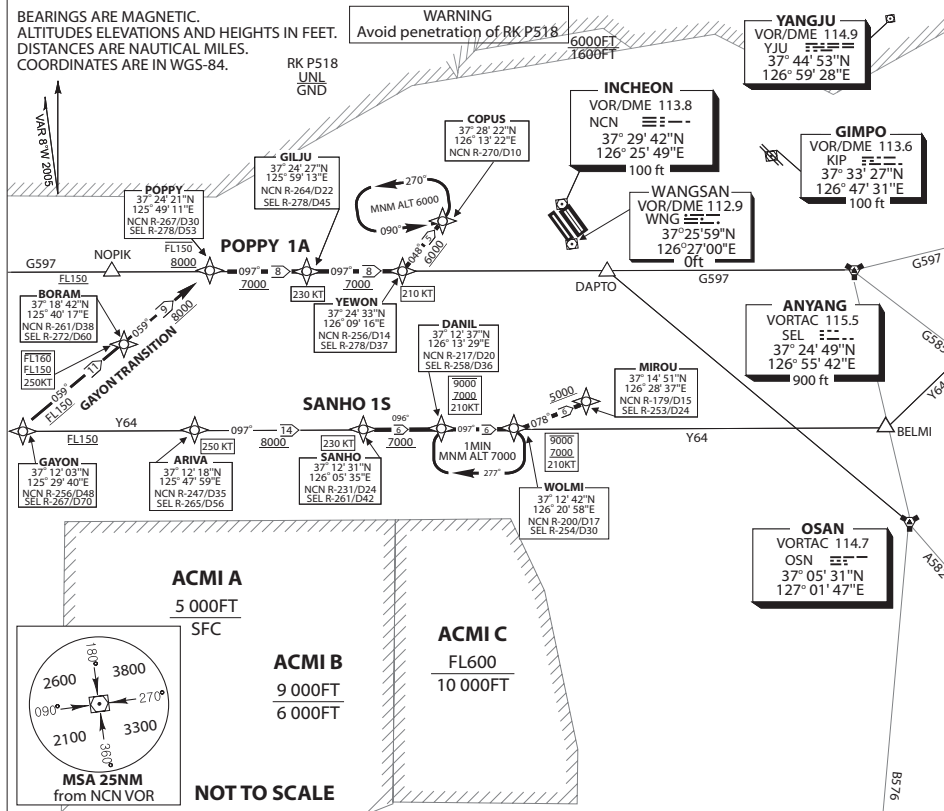


**STANDARD ARRIVAL CHART
INSTRUMENT (STAR) - ICAO**

SEOUL APP	119.1
INCHEON TWR	119.75
	118.2
	118.8
TRANSITION ALT	14,000'
TRANSITION LVL	FL140

SEOUL/Incheon INTL
RWY 15L/R
RNAV - POPPY 1A
RWY 33R/L
RNAV SANHO 1S

Note: Arrival under ICAO Flight Procedures.



GENERAL INFORMATION

1. If unable to comply with flight restrictions or RNAV, advise ATC for alternatives.
2. Maximum holding speed is 210KT IAS at WOLMI, 200KT IAS at COPUS and only direct entry available at WOLMI unless otherwise cleared by ATC.
3. Flight procedures designed based on the following RNAV sensors and RNAV system meeting terminal operation and FAA AC 20-130A or AC 20-138A, TSO C129a or equivalent.
- VOR/DME (NCN VOR/DME), DME/DME(2 DME or more station), GNSS basic receiver (except Class A).
4. All speed limitations of each fix are MAX SPEED.

DESIGNATOR	FROM	ROUTE	DESCENT ALTITUDE
GAYON Transition	Y64 (GAYON)	GAYON - BORAM - POPPY	Cross BORAM at between FL160 and FL150, POPPY at between FL150 and 8000ft
POPPY ONE ALPHA (RNAV)	POPPY	POPPY - GILJU - YEWON - COPUS	at or above 7000ft by YEWON, 6000ft by COPUS IAF
SANHO ONE SIERRA (RNAV)	Y64	SANHO - DANIL - WOLMI - MIROU	Cross DANIL and WOLMI at between 9000ft and 7000ft, at or above 5000ft by MIROU IAF. * Commence descent after passing ARIVA when cleared SANHO 1S arrival from ATC unless otherwise cleared.

Change: Added speed limitations.

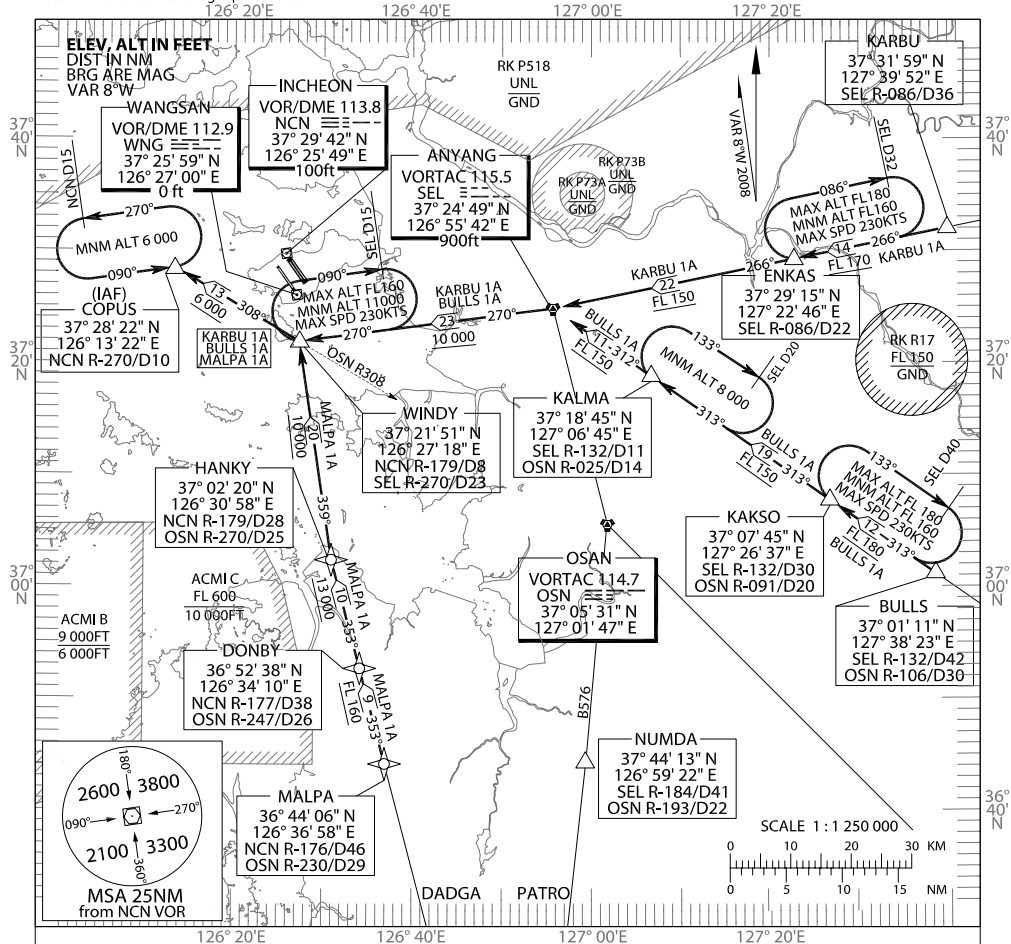
STANDARD ARRIVAL CHART
INSTRUMENT (STAR) - ICAO

TRANSITION ALT 14 000
TRANSITION LVL FL 140

SEOUL APP 119.1
119.75
INCHEON TWR 118.2
118.8

SEOUL/Incheon Intl(RKSI)
RWY 15L/R
KARBU 1A, BULLS 1A
RNAV - MALPA 1A

Note : Arrival under ICAO flight procedures.



GENERAL INFORMATION

1. Within SEOUL TMA, Maximum 250KT IAS at or above 10 000FT and maximum 230KT IAS below 10 000FT.
2. For profile descent with clearance "Descend via the (STAR name and number) arrival", pilots should commence descent after passing the First Fix of each arrival.
3. If unable to comply with flight restrictions or RNAV, advise ATC for alternatives.
4. Maximum holding speed is 230KT IAS at ENKAS, KAKSO, KALMA and WINDY, 200KT IAS at COPUS.
5. Flight procedures designed based on the following RNAV sensors and RNAV system meeting terminal operation and FAA AC 20-130A or AC 20-138A TSO C129a or equivalent.
- VOR/DME(NCN VOR/DME), DME/DME(2DME or more station), GNSS basic receiver(except Class A).

DESIGNATOR	FROM	ROUTE	DESCENT ALTITUDE
BULLS ONE ALPHA	G585	BULLS - KAKSO - KALMA - SEL VORTAC - WINDY - COPUS	At or above FL 180 by KAKSO, FL 150 by SEL VORTAC, 10 000FT by WINDY, and 6 000FT by COPUS
KARBU ONE ALPHA	G597	KARBU - ENKAS - SEL VORTAC - WINDY - COPUS	At or above FL 170 by ENKAS, FL 150 by SEL VORTAC, 10 000FT by WINDY, and 6 000FT by COPUS
MALPA ONE ALPHA (RNAV)	ATS Route (DADGA)	MALPA - DONBY - HANKY - WINDY - COPUS	At or above FL 160 by DONBY, 13 000FT by HANKY, 10 000FT by WINDY, and 6 000FT by COPUS

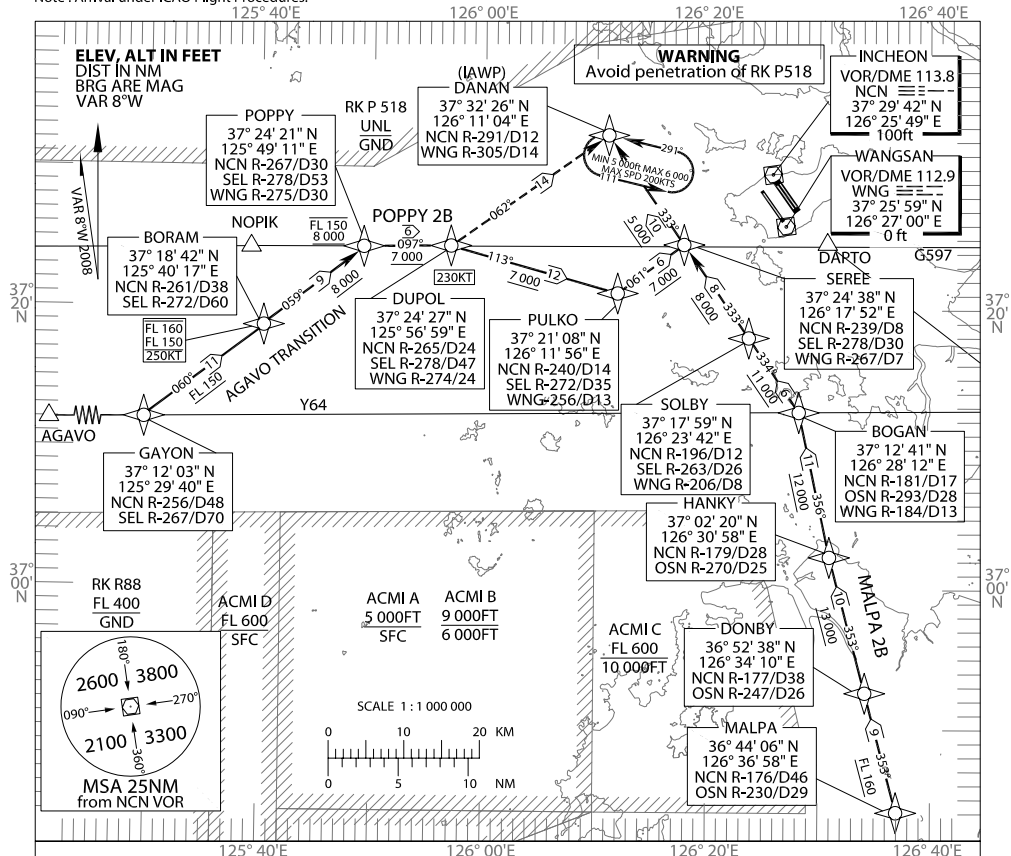
STANDARD ARRIVAL CHART
INSTRUMENT (STAR) - ICAO

TRANSITION ALT 14 000
TRANSITION LVL FL 140

SEOUL APP 119.1
119.75
INCHEON TWR 118.2
118.8

SEOUL/Incheon Intl(RKSI)
RWY 15L/R, RWY 16
RNAV POPPY 2B
RNAV MALPA 2B

Note : Arrival under ICAO Flight Procedures.



GENERAL INFORMATION

1. If unable to comply with flight restrictions or RNAV, advise ATC for alternatives.
2. Maximum holding speed is 200KT IAS at DANAN.
3. Flight procedures designed based on the following RNAV sensors and RNAV system meeting terminal operation and FAA AC 20-130A or AC 20-138A, TSO C129a or equivalent.
 - VOR/DME (NCN VOR/DME), DME/DME(2 DME or more station), GNSS basic receiver (except Class A).
4. ATC may instruct proceed to DANAN IAWP after DUPOL for traffic sequencing.
5. All speed limitations of each fix are MAX SPEED.

DESIGNATOR	FROM	ROUTE	DESCENT ALTITUDE
AGAVO Transition POPPY TWO BRAVO (RNAV)	Y64 (AGAVO) POPPY	AGAVO - GAYON - BORAM - POPPY - DUPOL - PULKO - SEREE - DANAN	Cross BORAM at between FL160 and FL150, POPPY at between FL150 and 8 000ft, at or above 7 000ft by DUPOL and PULKO, at or above 5 000ft by DANAN IAWP.
MALPA TWO BRAVO (RNAV)	Y51 (MALPA)	MALPA - DONBY - HANKY - BOGAN - SOLBY - SEREE - DANAN	Cross DONBY at or above FL160, HANKY 13 000ft, BOGAN 12 000ft, SOLBY 11 000ft, SEREE 8 000ft, at or above 5 000ft by DANAN IAWP.

Change : Added speed limitations.

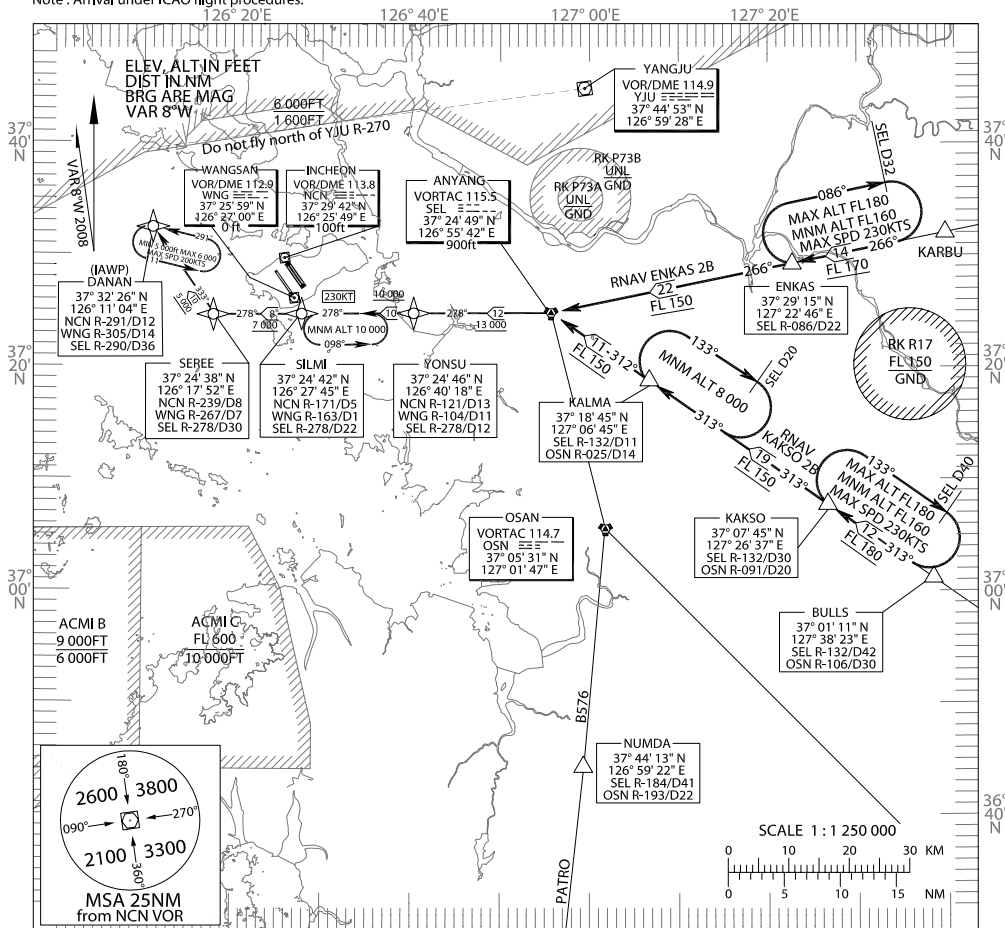
STANDARD ARRIVAL CHART
INSTRUMENT (STAR) - ICAO

TRANSITION ALT 14 000
TRANSITION LVL FL 140

SEOUL APP 119.1
INCHEON TWR 118.2
118.8

SEOUL/Incheon Intl(RKSI)
RWY 15L/R, RWY 16
RNAV - KAKSO 2B
RNAV - ENKAS 2B

Note : Arrival under ICAO flight procedures.



GENERAL INFORMATION

1. Within SEOUL TMA, Maximum 250KT IAS at or above 10 000FT and maximum 230KT IAS below 10 000FT.
2. For profile descent with clearance "Descend via the (STAR name and number) arrival", pilots should commence descent after passing the First Fix of each arrival.
3. If unable to comply with flight restrictions or RNAV, advise ATC for alternatives.
4. Maximum holding speed is 230KT IAS at ENKAS, KAKSO, KALMA and SILMI, 200KT IAS at DANAN.
5. Flight procedures designed based on the following RNAV sensors and RNAV system meeting terminal operation and FAA AC 20-130A or AC 20-138A, TSO C129a or equivalent - VOR/DME, DME/DME(2 DME or more station), GNSS basic receiver(except Class A) .
6. All speed limitations of each fix are MAX SPEED.

DESIGNATOR	FROM	ROUTE	DESCENT ALTITUDE
KAKSO TWO BRAVO (RNAV)	G585 (KAKSO)	KAKSO - KALMA - SEL VORTAC - YONSU - SILMI - SEREE - DANAN	At or above FL 180 by KAKSO, FL 150 by SEL VORTAC, 13 000FT by YONSU, 10 000FT by SILMI, 7000FT by SEREE and 5 000FT by DANAN.
ENKAS TWO BRAVO (RNAV)	G597 (ENKAS)	ENKAS - SEL VORTAC - YONSU - SILMI - SEREE - DANAN	At or above FL 170 by ENKAS, FL 150 by SEL VORTAC, 13 000FT by YONSU, 10 000FT by SILMI, 7000FT by SEREE and 5 000FT by DANAN.

Change : Added speed limitations.

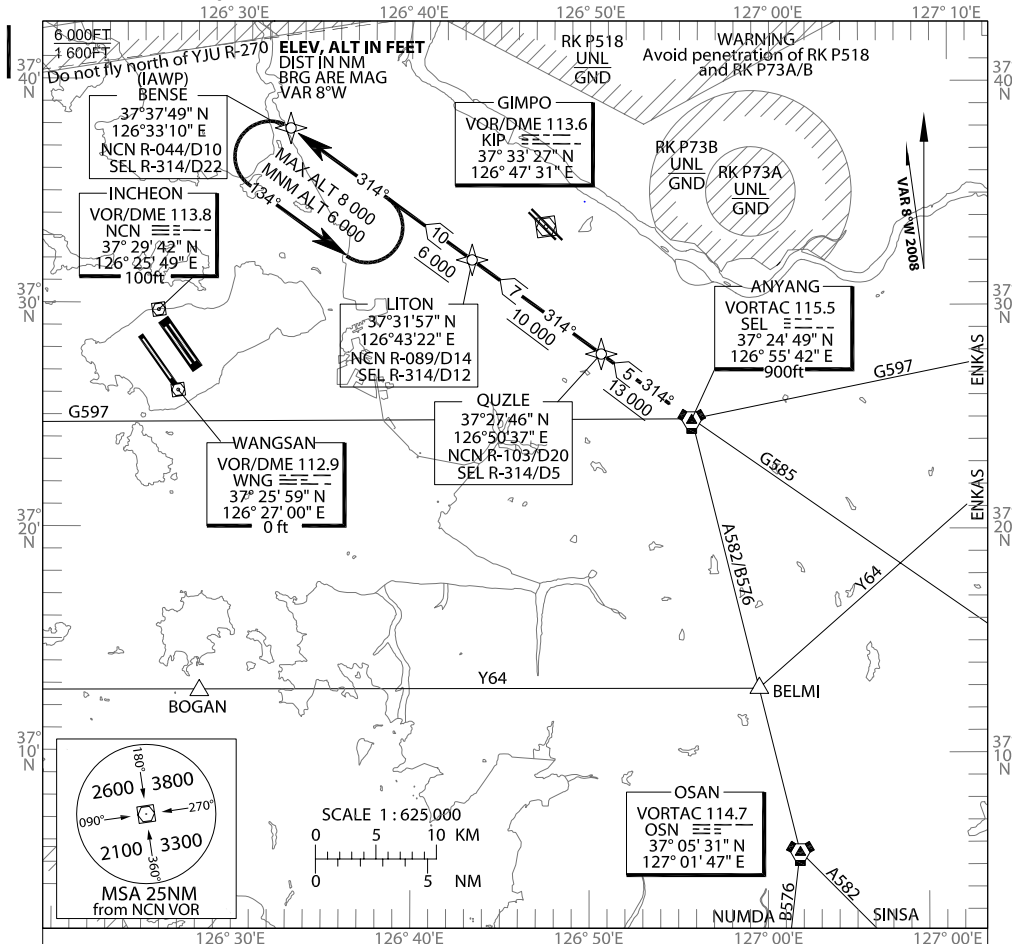
STANDARD ARRIVAL CHART
INSTRUMENT (STAR) - ICAO

TRANSITION ALT 14 000 SEOL APP 119.1
TRANSITION LVL FL 140 INCHEON TWR 118.2
118.8

SEOUL/Incheon Intl(RKSI)

RWY 15L/R
RNAV SEL 1E

Note : Arrival under ICAO Flight Procedures.



GENERAL INFORMATION

1. Within SEOUL TMA, maximum 250KT IAS at or above 10 000FT and maximum 230KT IAS below 10 000FT.
2. For profile descent with clearance "Descend via the (STAR name and number) arrival", pilots should commence descent after passing the First Fix of each arrival.
3. If unable to comply with flight restrictions or RNAV, advise ATC for alternatives.
4. Flight procedures designed based on the VOR/DME and following RNAV sensors and RNAV system meeting terminal operation and FAA AC 20-130A or AC 20-138A, TSO C129a or equivalent.
5. Non-RNAV arrival with VOR/DME or VORTAC available.

DESIGNATOR	FROM	ROUTE	DESCENT ALTITUDE
ANYANG ONE ECHO (RNAV)	G597 G585	SEL- QUZLE - LITON - BENSE	At or above 13 000FT by QUZLE, 10 000FT by LITON and 6 000FT by BENSE

Change : Added hatch for identification(RK P518).

AIP AMDT 8/08

CIVIL AVIATION SAFETY AUTHORITY

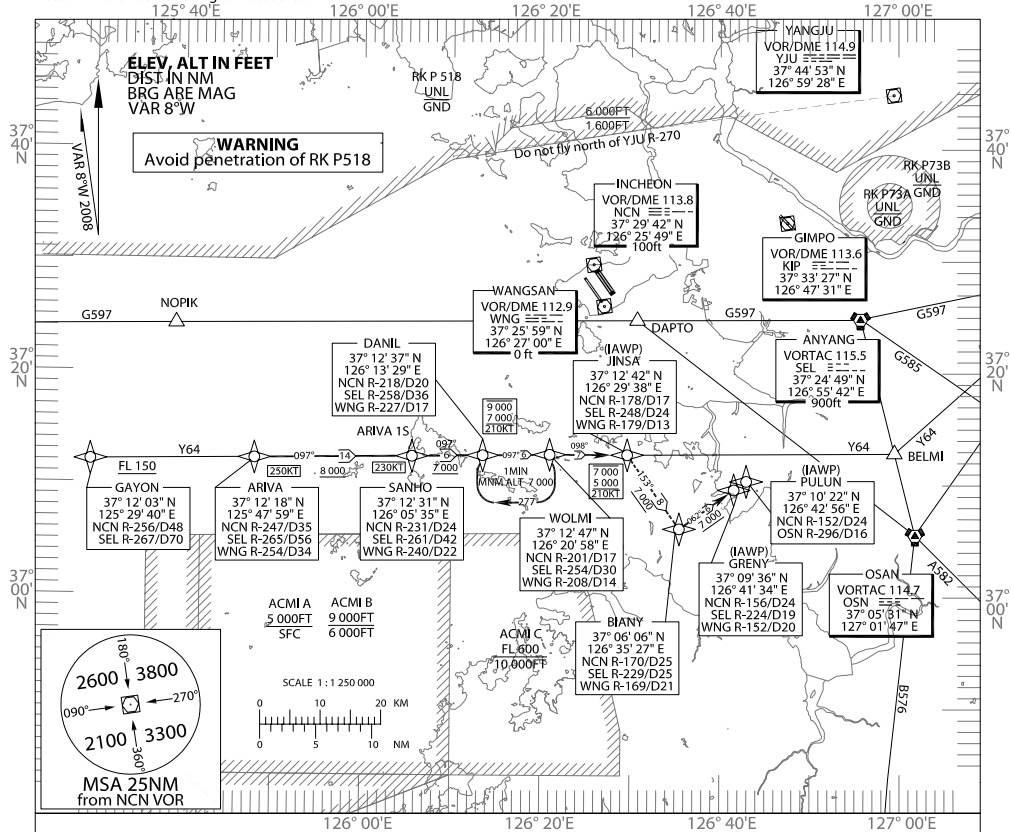
STANDARD ARRIVAL CHART
INSTRUMENT (STAR) - ICAO

TRANSITION ALT 14 000
TRANSITION LVL FL 140

SEOUL APP 119.1
119.75
INCHEON TWR 118.2
118.8

SEOUL/Incheon Intl(RKSI)
RWY 34
RWY 33L/R
RNAV ARIVA 1S

Note : Arrival under ICAO Flight Procedures.



1. If unable to comply with flight restrictions or RNAV, advise ATC for alternatives.
2. Maximum holding speed is 210KT IAS at WOLMI, and only direct entry available at WOLMI unless otherwise cleared by ATC.
3. Flight procedures designed based on the following RNAV sensors and RNAV system meeting terminal operation and FAA AC 20-130A or AC 20-138A, TSO C129a or equivalent.
4. BIANY, GREN waypoints may be used to provide route extensions for approaching RWY 34 and thereby facilitate the traffic sequencing.
5. All speed limitations of each fix are MAX SPEED.

DESIGNATOR	FROM	ROUTE	DESCENT ALTITUDE
ARIVA ONE SIERRA (RNAV)	Y64 (ARIVA)	ARIVA - SANHO - DANIL - WOLMI - JINSA	Cross SANHO at or above 8 000FT, DANIL at or above 7 000FT, WOLMI between 7 000FT to 9 000FT, JINSA IAWP between 7 000FT to 5 000FT.

Change : Added speed limitations.

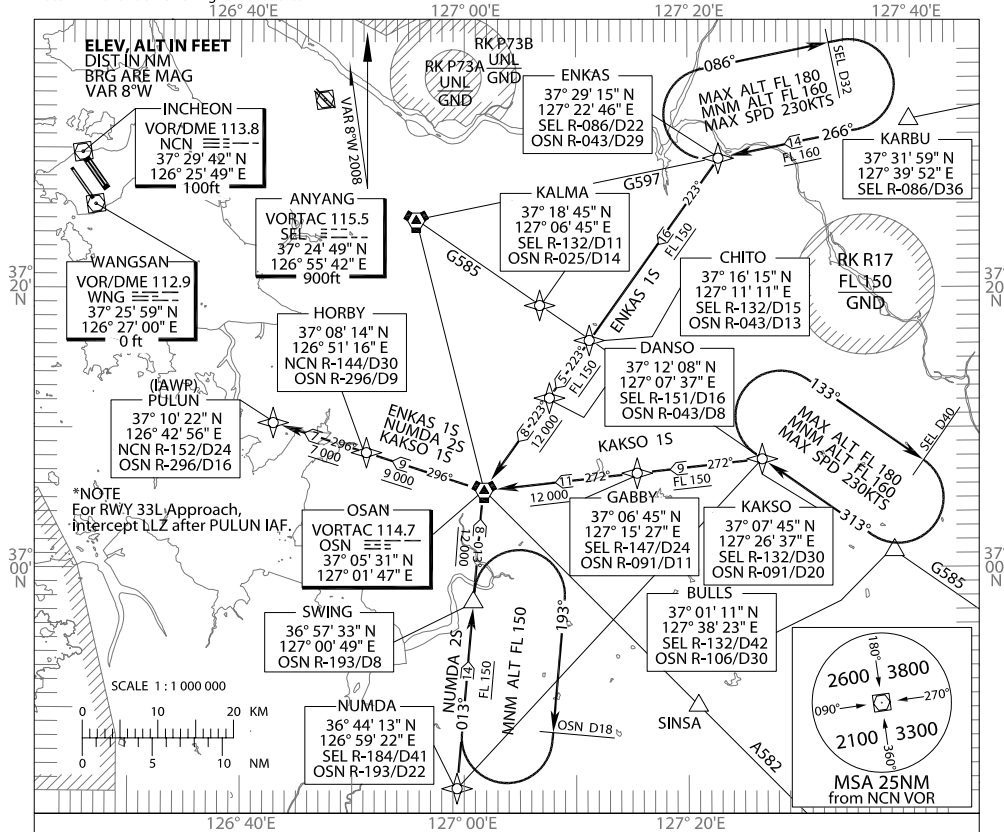
STANDARD ARRIVAL CHART
INSTRUMENT (STAR) - ICAO

TRANSITION ALT 14 000
TRANSITION LVL FL 140

SEOUL APP 119.1
INCHEON TWR 118.2

SEOUL/Incheon Intl(RKSI)
RWY 33L/R
RNAV - ENKAS 15, KAKSO 15
RNAV - NUMDA 25

Note : Arrival under ICAO Flight Procedures.



GENERAL INFORMATION

1. Within SEOUL TMA, maximum 250KT IAS at or above 10 000FT and maximum 230KT IAS below 10 000FT.
2. For profile descent with clearance "Descend via the (STAR name and number) arrival", pilots should commence descent after passing the First Fix of each arrival.
3. If unable to comply with flight restrictions or RNAV, advise ATC for alternatives.
4. Maximum holding speed 230KT IAS at ENKAS, KAKSO, and SWING.
5. Flight procedures designed based on the following RNAV sensors and RNAV system meeting terminal operation and FAA AC 20-130A or AC 20-138A, TSO C129a or equivalent.
6. Non-RNAV arrival available.

DESIGNATOR	FROM	ROUTE	DESCENT ALTITUDE
ENKAS ONE SIERRA (RNAV)	G597 (ENKAS)	ENKAS - CHITO - DANSO - OSN VORTAC - HORBY - PULUN	At or above FL160 by ENKAS, FL150 by DANSO, 12 000FT by OSN VORTAC, 9 000FT by HORBY and 7 000FT by PULUN
KAKSO ONE SIERRA (RNAV)	G585 (KAKSO)	KAKSO - GABBY - OSN VORTAC - HORBY - PULUN	At or above FL150 by GABBY, 12 000FT by OSN VORTAC, 9 000FT by HORBY and 7 000FT by PULUN
NUMDA TWO SIERRA (RNAV)	B576 (NUMDA)	NUMDA - SWING - OSN VORTAC - HORBY - PULUN	At or above FL150 by SWING, 12 000FT by OSN VORTAC, 9 000FT by HORBY and 7 000FT by PULUN

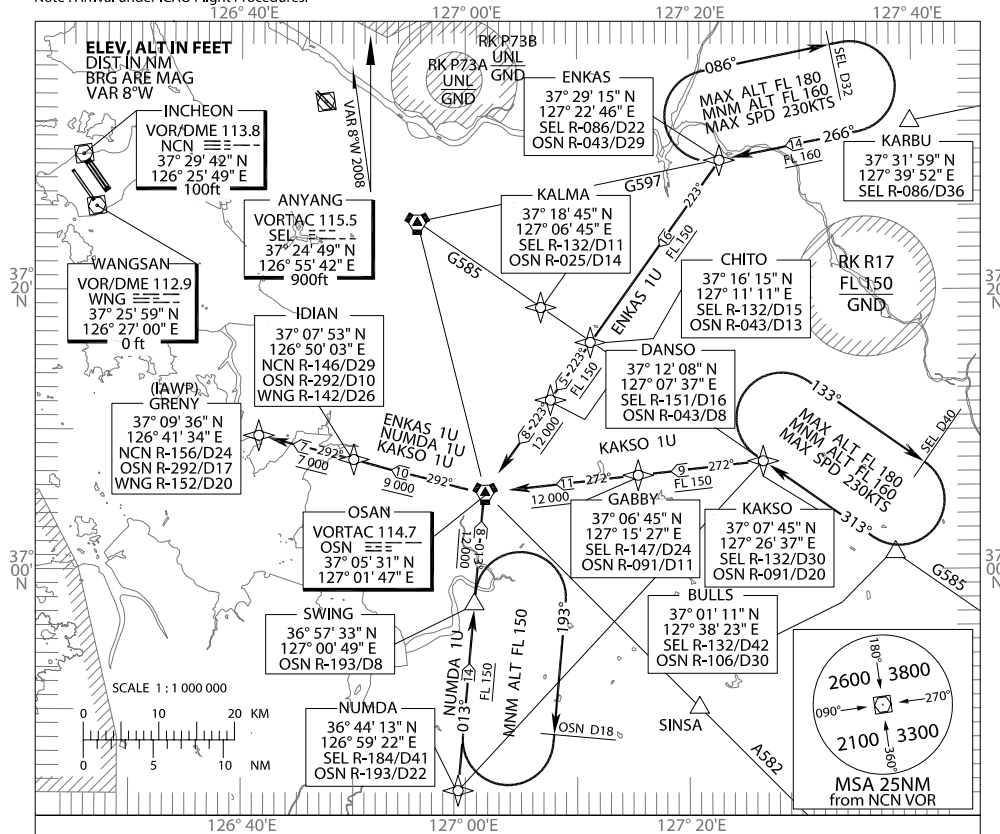
**STANDARD ARRIVAL CHART
INSTRUMENT (STAR) - ICAO**

TRANSITION ALT 14 000
TRANSITION LVL FL 140

SEOUL APP 119.1
119.75
INCHEON TWR 118.2
118.8

SEOUL/Incheon Intl(RKSI)
RWY 34
RNAV - ENKAS 1U, KAKSO 1U
RNAV - NUMDA 1U

Note : Arrival under ICAO Flight Procedures.



GENERAL INFORMATION

1. Within SEOUL TMA, maximum 250KT IAS at or above 10 000FT and maximum 230KT IAS below 10 000FT.
2. For profile descent with clearance "Descend via the (STAR name and number) arrival", pilots should commence descent after passing the First Fix of each arrival.
3. If unable to comply with flight restrictions or RNAV, advise ATC for alternatives.
4. Maximum holding speed 230KT IAS at ENKAS, KAKSO, and SWING.
5. Flight procedures designed based on the following RNAV sensors and RNAV system meeting terminal operation and FAA AC 20-130A or AC 20-138A, TSO C129a or equivalent.
6. Non-RNAV arrival available.

DESIGNATOR	FROM	ROUTE	DESCENT ALTITUDE
ENKAS ONE UNIFORM (RNAV)	G597 (ENKAS)	ENKAS - CHITO - DANSO - OSN VORTAC - IDIAN - GRENY	At or above FL160 by ENKAS, FL150 by DANSO, 12 000FT by OSN VORTAC, 9 000FT by IDIAN and 7 000FT by GRENY
KAKSO ONE UNIFORM (RNAV)	G585 (KAKSO)	KAKSO - GABBY - OSN VORTAC - IDIAN - GRENY	At or above FL150 by GABBY, 12 000FT by OSN VORTAC, 9 000FT by IDIAN and 7 000FT by GRENY
NUMDA ONE UNIFORM (RNAV)	B576 (NUMDA)	NUMDA - SWING - OSN VORTAC - IDIAN - GRENY	At or above FL150 by SWING, 12 000FT by OSN VORTAC, 9 000FT by IDIAN and 7 000FT by GRENY

Change : Added information(from SWING to OSN).