

TEL: 91-11-24632950 Extn: 2219/2233 AFS: VIDDYXAX FAX: 91-11-24615508 Email:- gmais@aai.aero	AERONAUTICAL INFORMATION SERVICES AIRPORTS AUTHORITY OF INDIA RAJIV GANDHI BHAVAN SAFDARJUNG AIRPORT NEW DELHI – 110003	52 / 2008
		23 rd July 2008

File No. AAI/NAD/09-09/AIP-SUPP (Part-AIS)

Following Supplement regarding the ILS Procedure (Z) Rwy 09 – Bangalore International Airport (BIAL) is issued for information, guidance and necessary action.



K. RAMALINGAM
CHAIRMAN
AIRPORTS AUTHORITY OF INDIA

[Effective Date : 28 AUGUST 2008]

ILS Procedure (Z) Rwy 09 – BANGALORE INTERNATIONAL AIRPORT (DME REQUIRED)

1.	Holding Procedures :-	
1.1	BEBAM (R-0270/26D BIB) 13 23 17.11 N 77 28 15.54 E (Note: The holding fix is a VOR/DME fix based on SILGAT VOR (114.5 BIB). The inbound track of the holding procedure is away from the station.)	Right hand pattern inbound track 270 Deg M (R-270 BIB). Outbound distance 21D (BIB). Minimum holding level FL85. Maximum holding level FL 140.
1.2	BIBDU (R-077/21D BIA)	One minute right hand pattern inbound track 257 Deg M. Minimum holding altitude FL85.
2	Procedure	(Note : Speed shall be restricted to 185 KT IAS maximum prior to crossing the lead radial (R-254 BIB).
2.1	BEBAM 2 Arrival (Note : Transition from enroute to Holding fix BEBAM shall take place as given below :-	Leave BEBAM via DME arc of radius 29D (BIB) descending to 6600 feet. Crossing lead radial (R-254 BIB) turn left to intercept LLZ (109.3 IBAN) inbound track 092 Deg M descending to 5900 feet. Descend on glide path to DA/H.

	<ol style="list-style-type: none"> 1. Aircraft from ATS route W56S/W101E (R-310 BIA) shall proceed via DME arc of radius 33D (BIB) to intercept track 090 Deg M (R-270 BIB) to join the holding pattern at BEBAM. 2. Aircraft from ATS route W57S/W47S (R-027 BIA) shall proceed from BEGRA (R-027/21D BIA) to VOR (114.5 BIB) via R-347 (BIB). Thereafter, proceed via R-270 (BIB) to join the holding pattern at BEBAM. 3. Aircraft from ATS route W81 (R-268 BIA), W43N/W118N (R-204 BIA), W42N (R-161 BIA) and W117 (R-088) shall proceed via R-307 (BIA) to join the holding pattern at BEBAM. 4. Aircraft equipped with RNAV capability may be cleared directly to BEBAM to join the holding procedure under the radar environment. 	
--	---	--

3	IF Altitude at IF Altitude at 4D (IBAN) Altitude at 1D(IBAN) Glide path Angle ILS RDH	15D (IBAN) 6600 feet 4440 feet 3360 feet 3.4 Degree 51 feet
---	--	--

4	OCA	Straight in 3205 feet Circling Cat A/B 3620 feet Cat C/D 3870 feet (Visual Manouvring (Circling) is restricted to North of Aerodrome Only).
5	G.P. In-operative Procedure FAF Altitude at FAF Descent Gradient MAPt	8.1D (IBAN) 5900 feet 5.94 % (3.4 degree) 1D (IBAN)
5.1	OCA	Straight in 3620 feet Circling Cat A/B 3620 feet Cat C/D 3870 feet (Visual Manouvring (Circling) is restricted to North of Aerodrome Only).

5.2 Distance (IBAN)/ Altitude Information :

Distance (NM)	8.1D	7D	6D	5D	4D	3D	2D
Altitude (Feet)	5900	5520	5160	4800	4440	4080	3720

5.3 Rate of Descent / Ground Speed Information:

Ground Speed (Kt)	80	100	120	140	160	180
Rate of Descent (Ft./Min)	480	600	720	840	960	1080

6. M.A. Procedure : Climb straight ahead until VOR (BIA). Then turn left climb
On R-077 (BIA) to 5000 feet. Crossing 8D (BIA) climb to
7000 feet and proceed to BIBDU to join holding at FL85
Or as instructed by ATC.

(Note: From BIBDU aircraft shall proceed via R-125 to VOR (114.5 BIB). Thereafter via R-270 (BIB) to BEBAM to join the holding or for carrying out another approach.)

7 MSA : Sector 025 – 180 5500 feet
 Upto 25NM
 Sector 180 – 025 5900 feet
 Upto 25NM

(CAUTION: Aircraft operating at Military Airfield Yelahanka located at 240 Deg/7NM from ARP/ BIAL).

8. Aerodrome Operating Minima

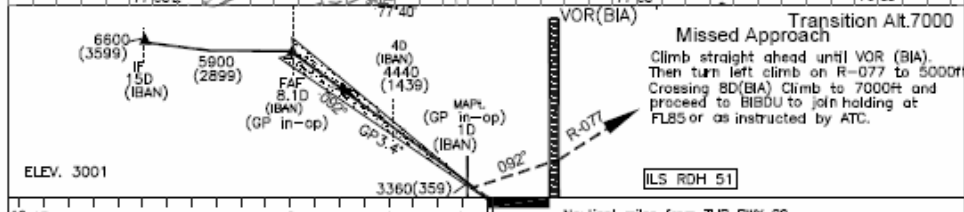
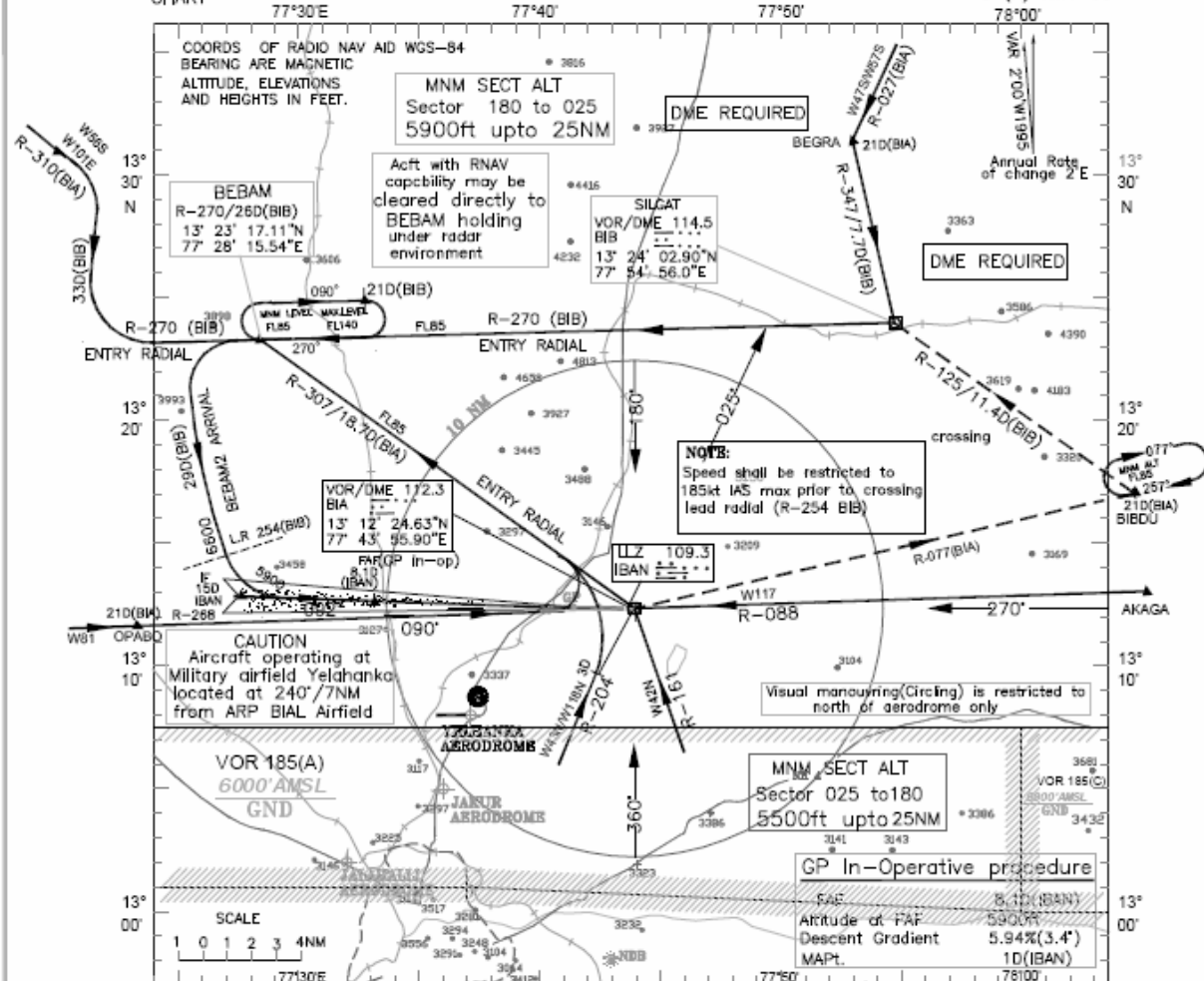
Aerodrome Operating Minima	Category A (Visb./RVR)		Category B (Visb./RVR)		Category C (Visb./RVR)		Category D (Visb./RVR)	
	ALS	ALS OUT	ALS	ALS OUT	ALS	ALS OUT	ALS	ALS OUT
Normal Minima (ILS)	800(550)	1200	800(550)	1200	800(550)	1200	800(550)	1200
Restricted Minima (ILS)	900(650)	1200	900(650)	1200	900(650)	1200	900(650)	1200
Normal Minima (GP IN-OP)	1600	2400	1600	2400	2800	3600	3200	4000
Restricted Minima (GP IN-OP)	2000	2800	2000	2800	3200	4000	3600	4400
Normal Circling Minima		3600		3600		4000		4400
Restricted Circling Minima		3600		3600		4400		4800

INSTRUMENT
APPROACH
CHART

AERODROME ELEV. 3001ft.
HEIGHTS RELATED TO
THR RWY 09 ELEV.3001ft

APP. 121.25
TWR. 124.35
TAR 119.45

BANGALORE INT.
INDIA
ILS (Z) RWY 09



CATEGORY OF AIRCRAFT	O C A		Distance (IBAN)/Altitude Information							
	A/B	C/D	8.1D	7D	6D	5D	4D	3D	2D	
STRAIGHT-IN	3205	3205	5900	5520	5160	4800	4440	4080	3720	
CIRCLING	3620	3870	Rate of Descent /Ground speed information							
GP in-op Procedure:			Ground speed (kt.)		80	100	120	140	160	180
STRAIGHT-IN	3620	3620	Rate of descent (ft./min)		480	600	720	840	960	1080
CIRCLING	3620	3870								

AERODROME OPERATING MINIMA	CATEGORY A		CATEGORY B		CATEGORY C		CATEGORY D	
	ALS	ALS OUT	ALS	ALS OUT	ALS	ALS OUT	ALS	ALS OUT
NORMAL MINIMA (ILS)	800(550)	1200	800(550)	1200	800(550)	1200	800(550)	1200
RESTRICTED MINIMA (ILS)	900(650)	1200	900(650)	1200	900(650)	1200	900(650)	1200
NORMAL MINIMA (GP INOP)	1600	2400	1600	2400	2800	3600	3200	4000
RESTRICTED MINIMA (GP INOP)	2000	2800	2000	2800	3200	4000	3600	4400
NORMAL CIRCLING MINIMA	3600		3600		4000		4400	
RESTRICTED CIRCLING MINIMA	3600		3600		4400		4800	

DRG. NO. AI/18-IALC/ 08/18.07.08