

INSTRUMENT APPROACH CHART-ICAO

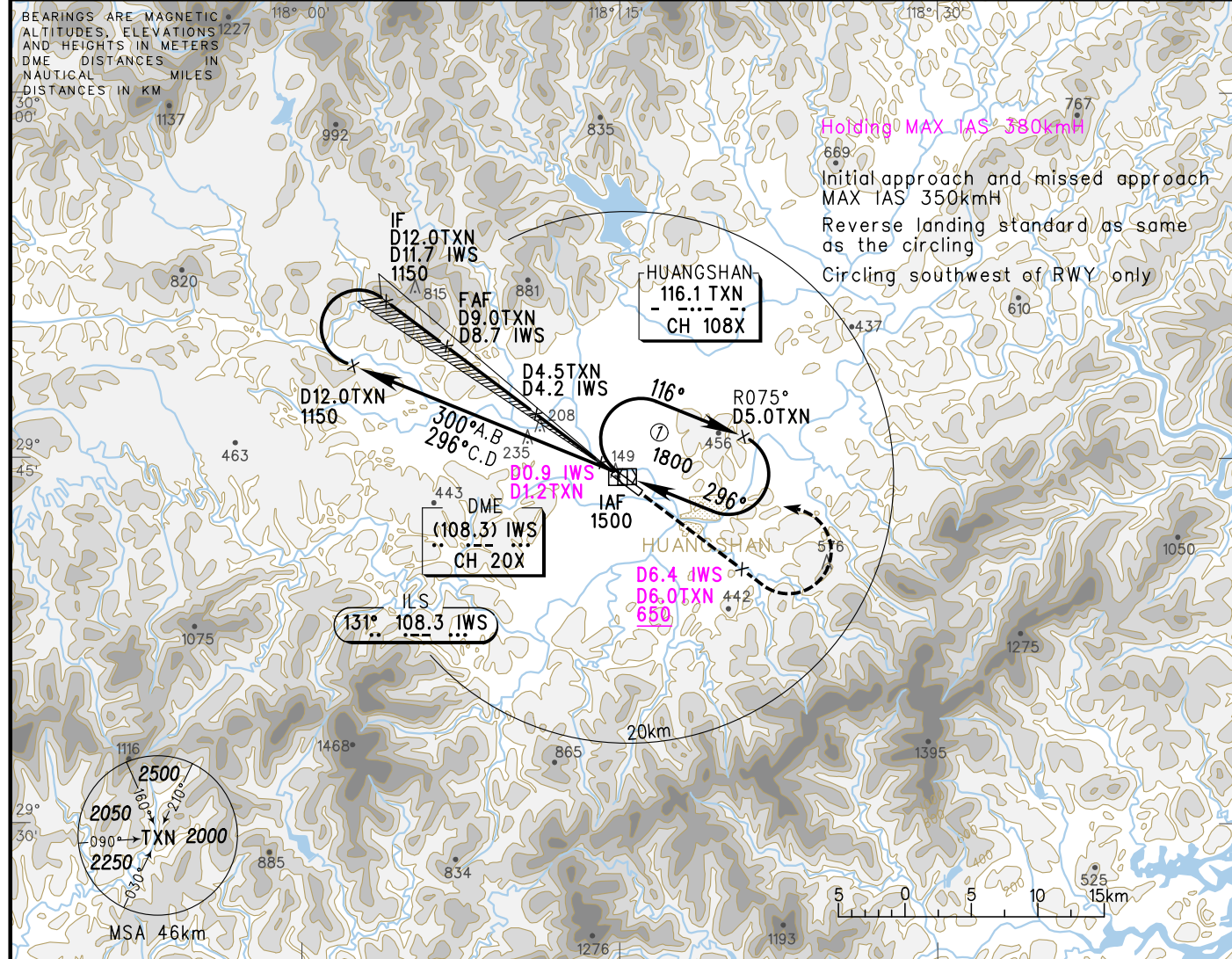
VAR 4° W

AERODROME ELEV 134
HEIGHTS RELATED TO
THR RWY13 ELEV 134

TWR 118.6(130.0)

ZSTX HUANGSHAN/Tunxi

ILS/DME RWY13

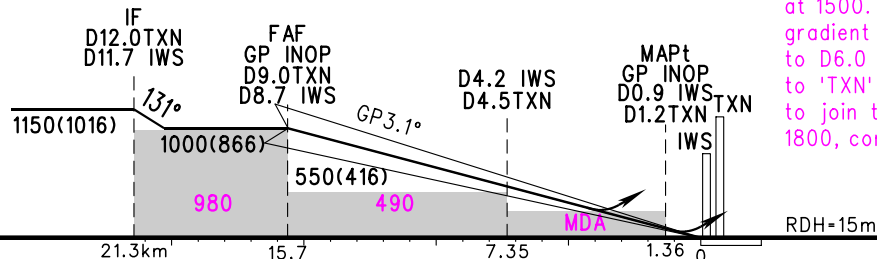


Holding MAX IAS 350km/h
Initial approach and missed approach
MAX IAS 350km/h
Reverse landing standard as same
as the circling
Circling southwest of RWY only

GP INOP	DME (IWS) (NM)	8	7	6	5	4	3	2
	ALT (m)	931	831	731	630	530	430	

TL 3600
TA 3000
3300(QNH>1031HPA)
2700(QNH<979HPA)

MISSED APPROACH
Climb straight ahead to D6.0 TXN above 650, turn LEFT to 'TXN' at 1500. When missed APCH climb gradient 2.5%:climb straight ahead to D6.0 TXN above 550, turn LEFT to 'TXN' above 1200, turn RIGHT to join the holding pattern to 1800, contact ATC.



		A	B	C	D	FAF-MAPt(GP INOP) 14.34km						
ILS/DME DA(H) VIS	A	194(60) 800		199(65) 800	204(70) 1000	GS in kt	80	100	120	140	160	180
	B	264(130) 1600		269(135) 1800	274(140) 2000	kmH	150	185	220	260	295	335
GP INOP	MDA(H) VIS	340(206) 3000		340(206) 3200	340(206) 3400	Time min:sec	05:48	04:39	03:52	03:19	02:54	02:35
CIRCLING	MDA(H) VIS	400(266) 3000	450(316) 4000	500(366) 4800	550(416) 5000	Rate of descent m/s	2.3	2.8	3.3	3.9	4.4	5.0

Note: Missed APCH climb gradient A 4.0%, B 2.5%.
Changes: Landing minima, MDA.