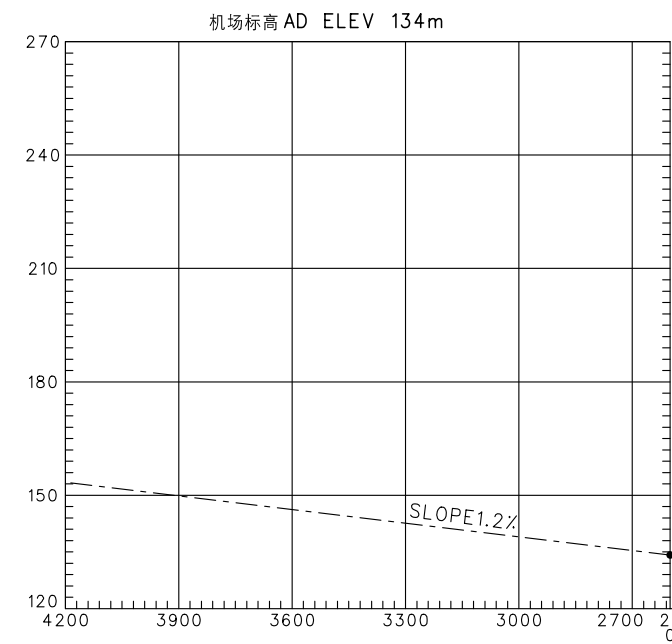
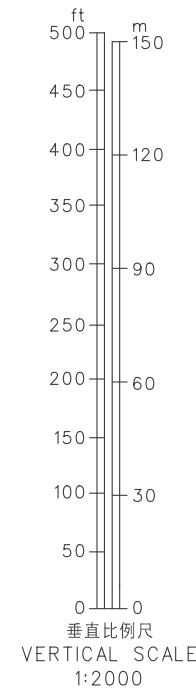


机场障碍物图-A型(运行限制)
AERODROME OBSTRUCTION CHART-ICAO
TYPE A(OPERATING LIMITATIONS)

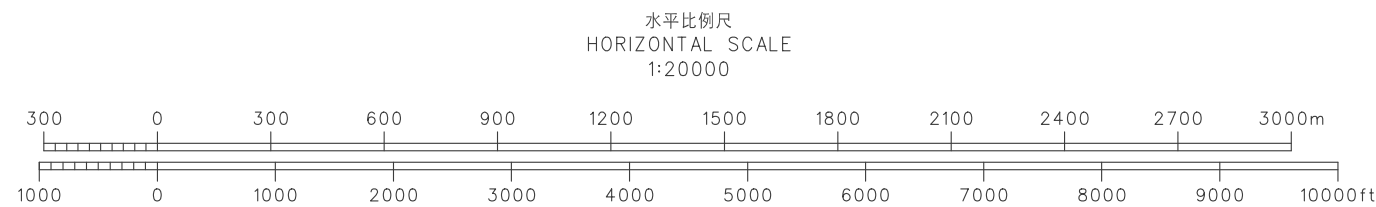
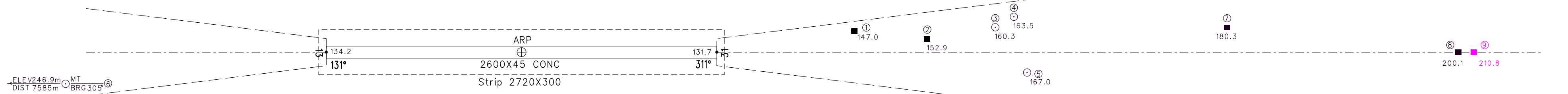
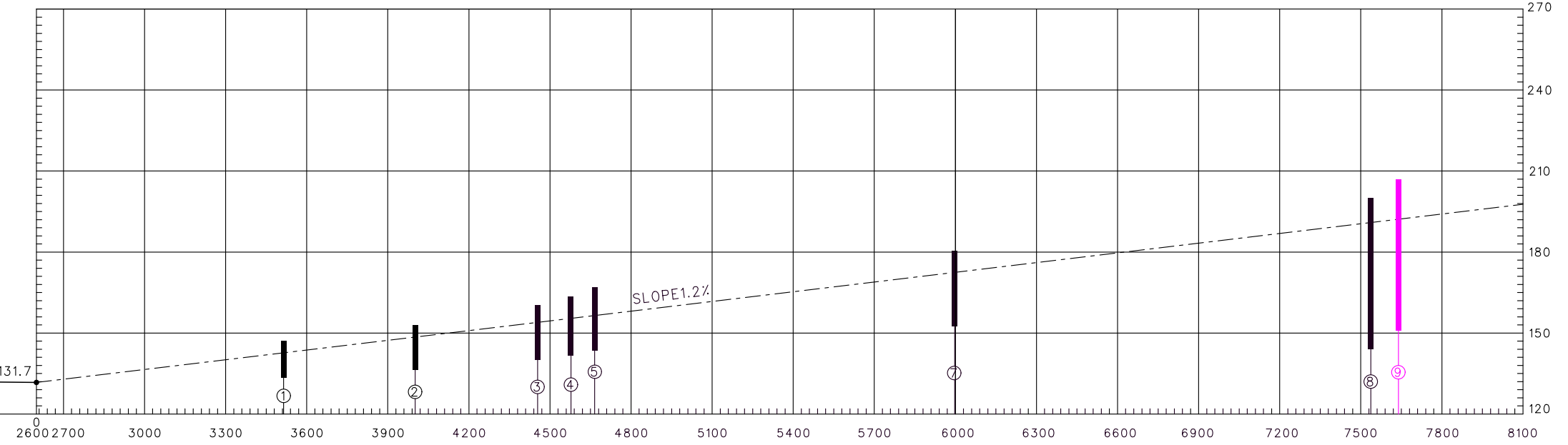
黄山/屯溪 ZSTX HUANGSHAN/Tunxi

尺度和标高为米,方位为磁方位 DIMENSIONS AND ELEVATIONS IN METERS BEARINGS ARE MAGNETIC

MAGNETIC VARIATION 磁差 4° W西



跑道 RWY:13-31		
跑道 13 RWY 13	运行数据 OPERATIONAL DATA	跑道 31 RWY 31
2600	可用起飞滑跑距离 TAKE-OFF RUN AVAILABLE	2600
2600	可用起飞距离 TAKE-OFF DISTANCE AVAILABLE	2600
2600	可用加速停止距离 ACCELERATE STOP DISTANCE AVAILABLE	2600
2600	可用着陆距离 LANDING DISTANCE AVAILABLE	2600



图例 LEGEND	
①	障碍物编号 IDENTIFICATION NO
⊙	天线杆、铁塔 POLE
■	建筑物 BUILD OR LARGE STRUCTURE
▲	山 MOUNTAIN

修正记录 AMENDMENT RECORD		
编号 Nr	日期 DATE	修正人 ENTERED BY

Changes: OBST.