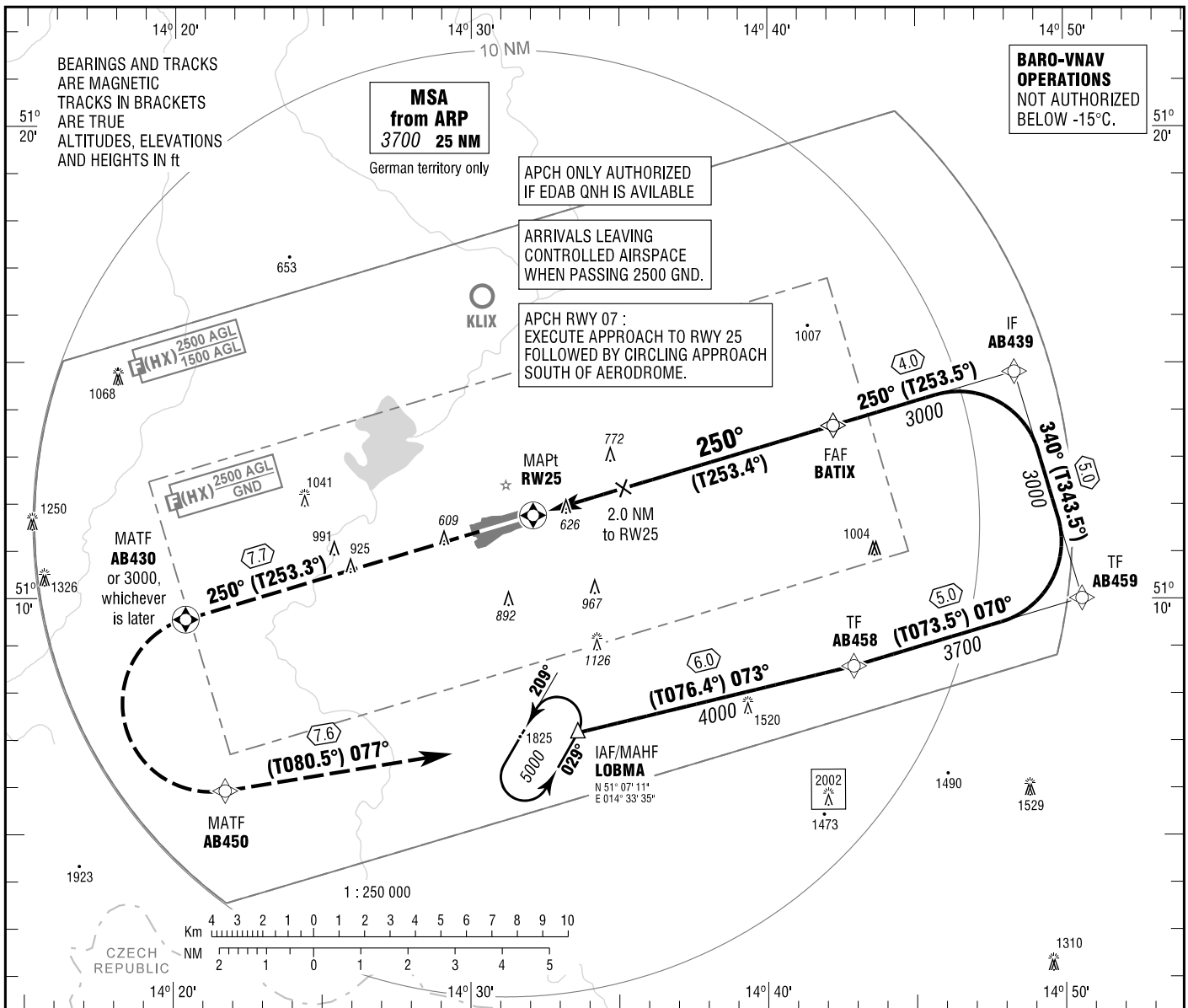


**INSTRUMENT  
APPROACH  
CHART - ICAO**

MÜNCHEN RADAR 125.875  
BAUTZEN INFO 120.600

ELEV 568  
OCH RELATED TO VAR 3° E  
THR 25 ELEV 530

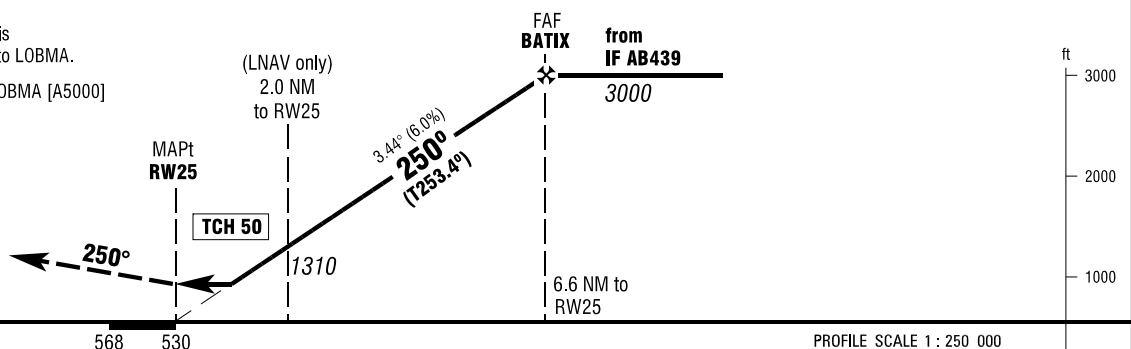
**BAUTZEN  
RNAV (GPS)  
RWY 25**



**MISSED APPROACH PROCEDURE**

Climb on track 250° to 5000; when passing 3000 or AB430, whichever is later, LT, via AB450 on track 077° to LOBMA.

AB430 - [A3000+; L] - AB450 - LOBMA [A5000]



OCA (OCH)	A	B	C
LNAV	950 (420)	950 (420)	950 (420)
LNAV / VNAV	860 (330)	880 (350)	880 (350)
CIRCLING* OCH RELATED TO AD ELEV	1190 (620)	1270 (700)	1520 (960)

DIST THR / RW25	1	2	3	4	5	6
ALTITUDE	950	1310	1680	2040	2410	2770

Timing not authorized for defining the MAPt.

GS	kt	80	100	120	140	160	180
BATIX - RW25 (6.6 NM)	MIN:SEC	4:59	3:59	3:19	2:51	2:29	2:13
Rate of descent (6.0%)	ft / MIN	490	610	730	850	970	1090

\*SOUTH OF AERODROME ONLY.

Correction: Tracks.