

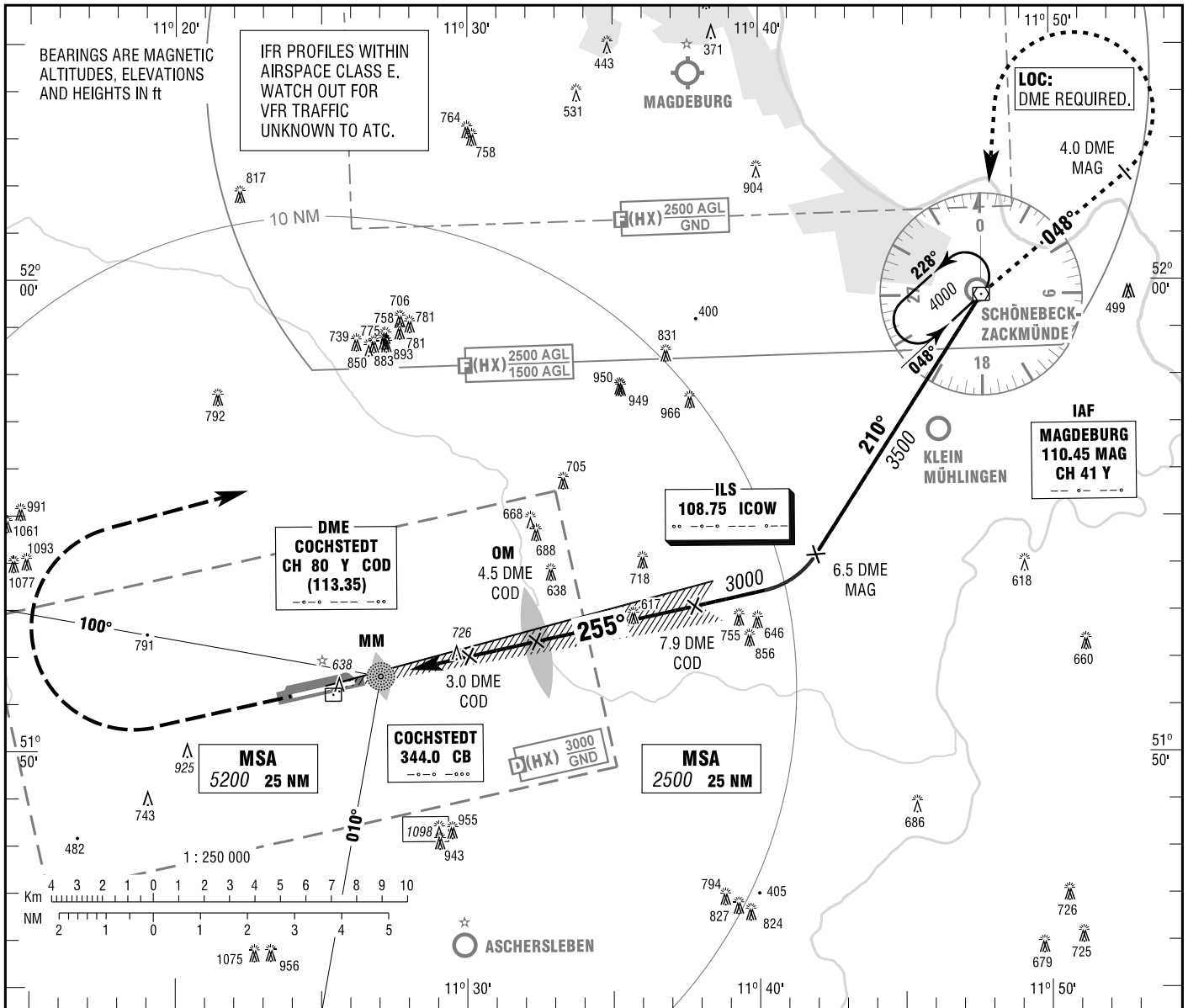
INSTRUMENT
APPROACH
CHART - ICAO

VAR 2° E

ELEV 601
OCH RELATED TO
THR 26 ELEV 596

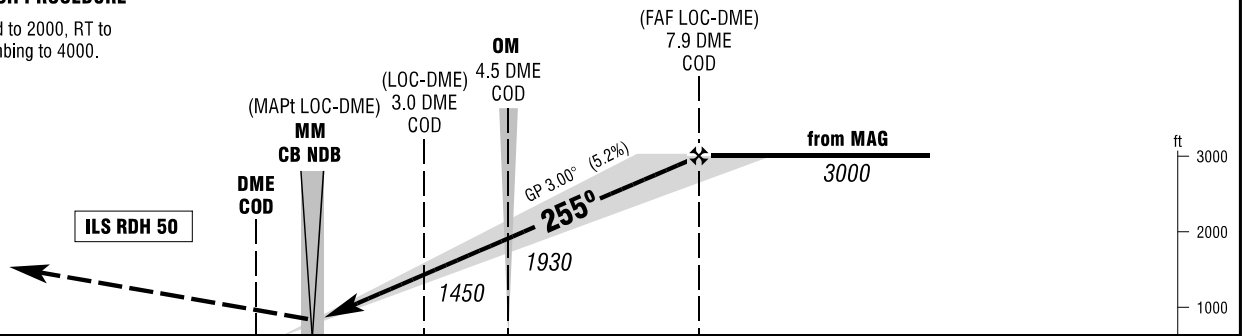
BREMEN RADAR 123.225
COCHSTEDT TOWER 131.125
COCHSTEDT GROUND 121.825

MAGDEBURG/COCHSTEDT
ILS or LOC
RWY 26



MISSED APPROACH PROCEDURE

Climb straight ahead to 2000, RT to
MAG VOR/DME climbing to 4000.



NM 6 5 4 3 2 1 0 1 2 3 4 5 6 7 8 9 10 11 12 13 14 NM

PROFILE SCALE 1 : 250 000

OCA (OCH)	A	B	C	D
ILS CAT I	769 (173)	779 (183)	789 (193)	799 (203)
LOC-DME	980 (380)	980 (380)	980 (380)	980 (380)
CIRCLING * OCH RELATED TO AD ELEV	1130 (530)	1220 (620)	1500 (900)	1500 (900)

DME COD	2	3	4	5	6	7
DIST THR	1.5	2.5	3.5	4.5	5.5	6.5
ALTITUDE	1130	1450	1770	2080	2400	2720

LOC-DME: Timing not authorized for defining the MAPt.

GS	kt	80	100	120	140	160	180
OM - THR (4.0 NM)	MIN:SEC	3:00	2:24	2:00	1:43	1:30	1:20
Rate of descent (5.2%)	ft / MIN	420	530	640	740	850	960

*CIRCLING SOUTH OF AERODROME ONLY

Correction: OCA(H) obstacles & values, highest obstacle, note added.