

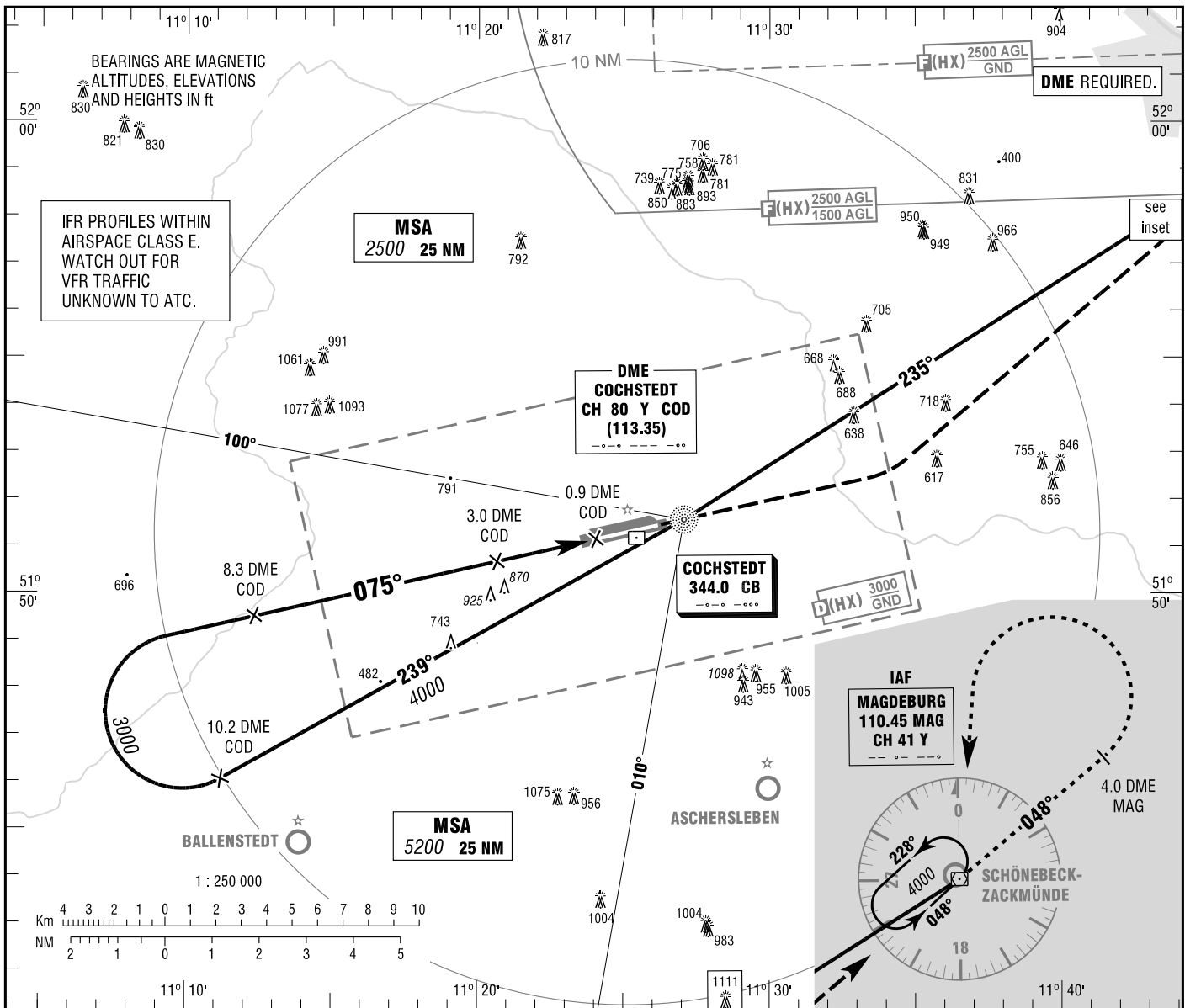
INSTRUMENT
APPROACH
CHART - ICAO

VAR 2° E

ELEV 601
OCH RELATED TO
THR 26 ELEV 596

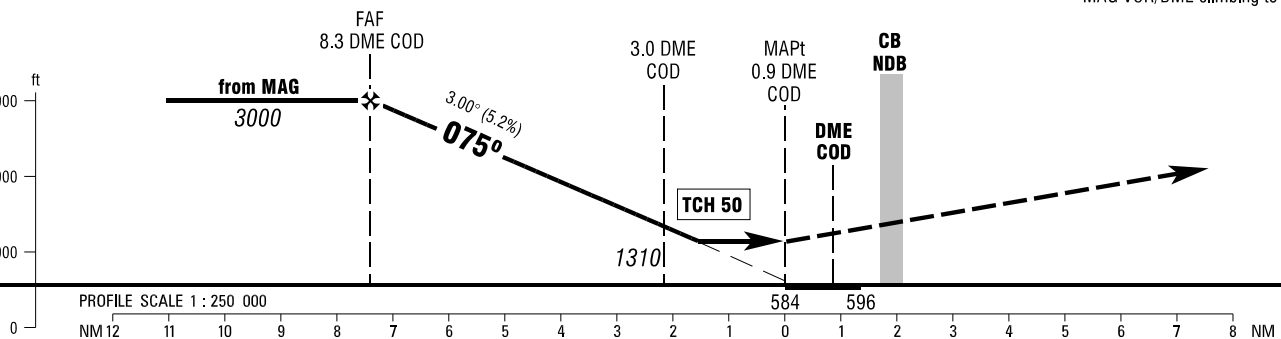
BREMEN RADAR 123.225
COCHSTEDT TOWER 131.125
COCHSTEDT GROUND 121.825

MAGDEBURG/COCHSTEDT
NDB
RWY 08



MISSED APPROACH PROCEDURE

Climb straight ahead to 2000, LT to
MAG VOR/DME climbing to 4000.



| OCA (OCH) | A | B | C | D |
|------------------------------------|---------------|---------------|---------------|---------------|
| NDB-DME | 1120 (540) | 1120 (540) | 1120 (540) | 1120 (540) |
| CIRCLING OCH RELATED TO AD ELEV | 1130 (530) | 1220 (620) | 1500 (900) | 1500 (900) |

| | | | | | | | | |
|----------|------|------|------|------|------|------|--|--|
| DME COD | 8 | 7 | 6 | 5 | 4 | 3 | | |
| DIST THR | 7.1 | 6.1 | 5.1 | 4.1 | 3.1 | 2.1 | | |
| ALTITUDE | 2900 | 2580 | 2260 | 1940 | 1630 | 1310 | | |

Timing not authorized for defining the MAPt.

| | | | | | | | |
|----------------------------------|----------|------|------|------|------|------|------|
| GS | kt | 80 | 100 | 120 | 140 | 160 | 180 |
| 3.0 DME COD-0.9 DME COD (2.1 NM) | MIN:SEC | 1:35 | 1:16 | 1:03 | 0:54 | 0:47 | 0:42 |
| Rate of descent (5.2%) | ft / MIN | 420 | 530 | 640 | 740 | 850 | 960 |

* CIRCLING SOUTH OF AERODROME ONLY.

Correction: OCA(H) obstacles & values, note added.