

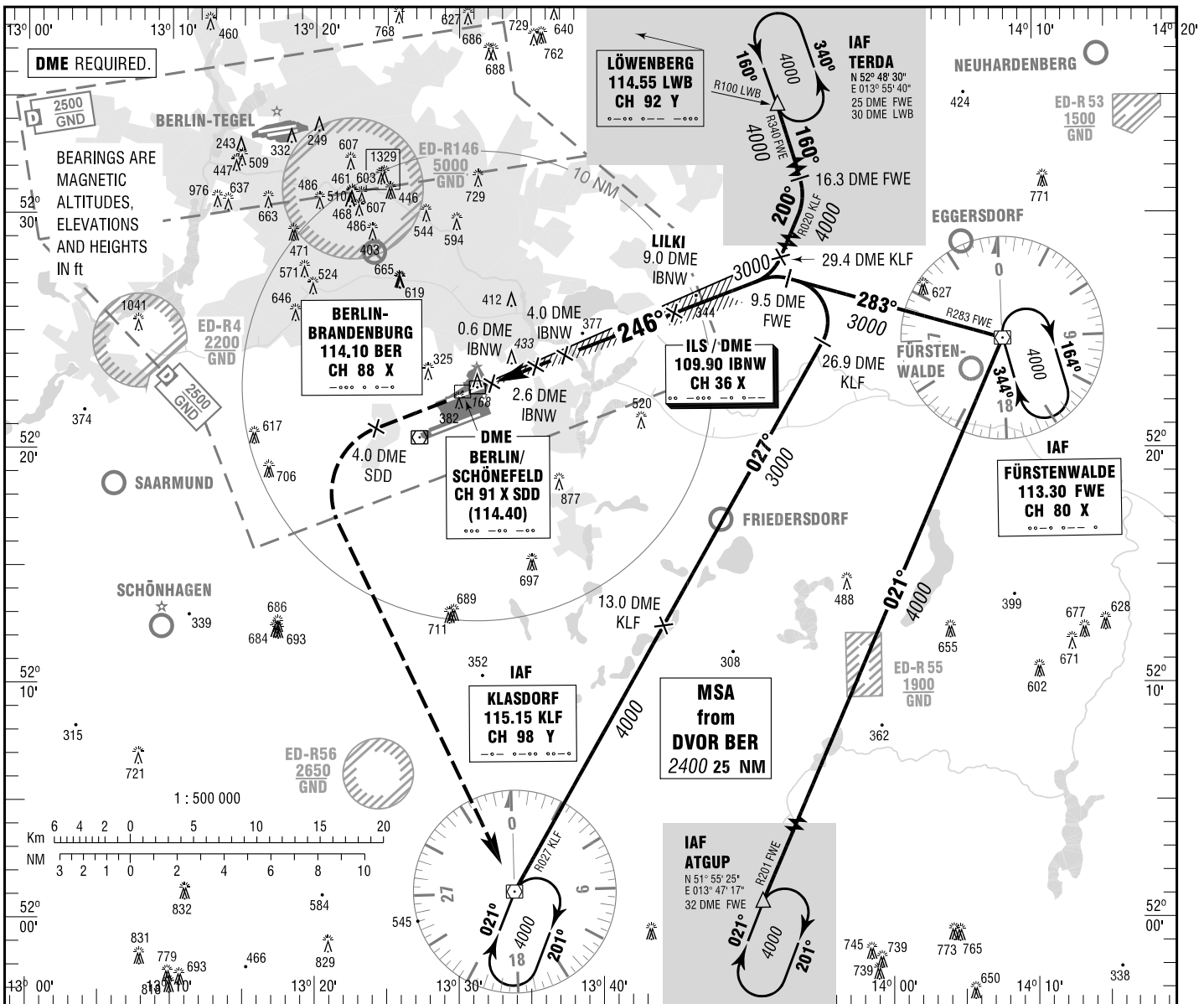
BERLIN/SCHÖNEFELD
ILS CAT II & III or LOC
RWY 25R

ATIS 123.775
BREMEN RADAR 119.625 (TERDA)
126.425 (KLF, FWE, ATGUP)

DIRECTOR 136.100
TOWER 120.025
GROUND 129.500

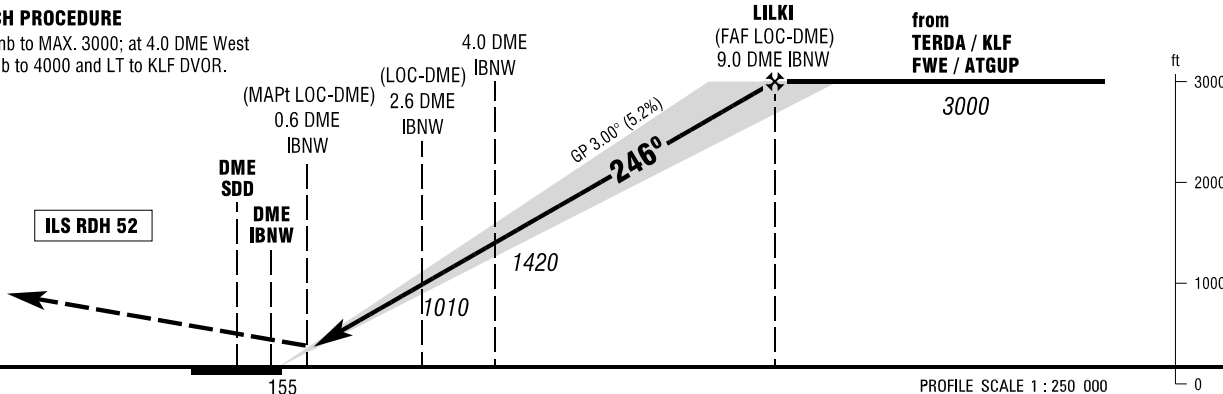
ELEV 157
OCH RELATED TO VAR 3° E
THR 25R ELEV 155

INSTRUMENT
APPROACH
CHART - ICAO



MISSED APPROACH PROCEDURE

On runway track, climb to MAX. 3000; at 4.0 DME West of SDD continue climb to 4000 and LT to KLF DVOR.



OCA (OCH)	A	B	C	D	D _t
ILS/DME CAT I	299 (144)	309 (154)	319 (164)	329 (174)	
ILS/DME CAT II	211 (56)	227 (72)	240 (85)	253 (98)	
LOC-DME	540 (390)	540 (390)	540 (390)	540 (390)	

DME IBNW	2	3	4	5	6	7	8
DIST THR	1.8	2.8	3.8	4.8	5.8	6.8	7.8
ALTITUDE	790	1100	1420	1740	2060	2380	2700

LOC-DME: Timing not authorized for defining the MAPt.

GS	kt	80	100	120	140	160	180
4.0 DME IBNW - THR (3.8 NM)	MIN:SEC	2:51	2:17	1:54	1:38	1:26	1:16
Rate of descent (5.2%)	ft / MIN	420	530	640	740	850	960

CAT IIIa AND CAT IIIb (MNM RVR 125m) APPROVED.