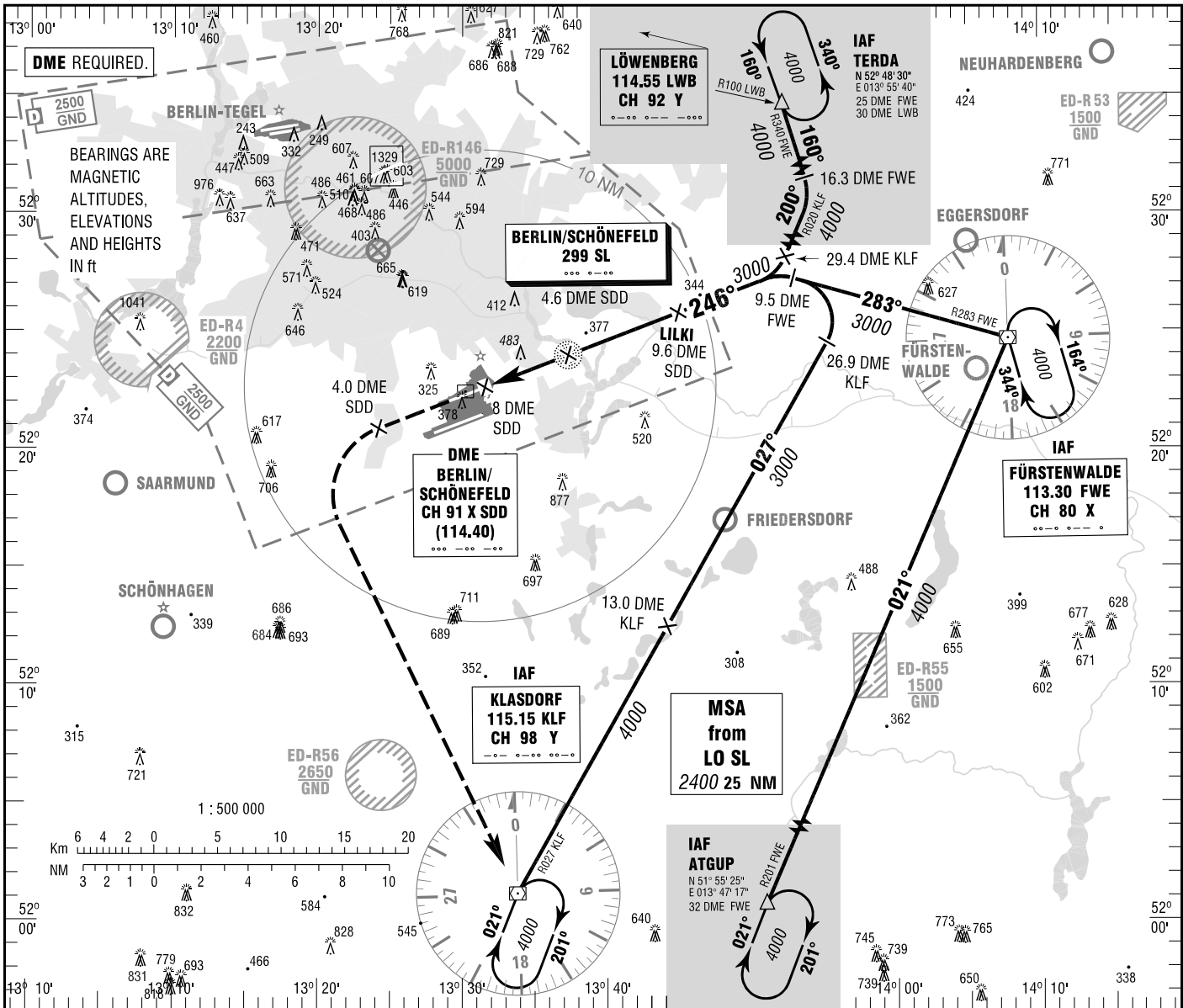


BERLIN/SCHÖNEFELD
NDB
RWY 25R

ATIS 123.775
BREMEN RADAR 119.625 (TERDA)
126.425 (KLF, FWE, ATGUP)
DIRECTOR 136.100
TOWER 120.025
GROUND 129.500

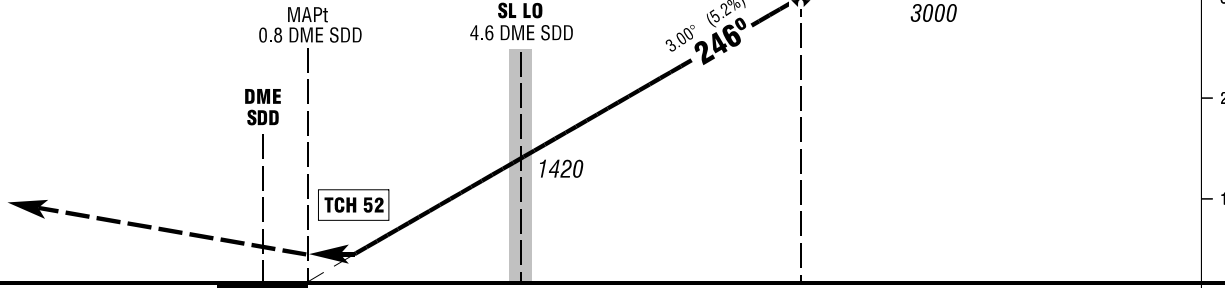
ELEV 157
OCH RELATED TO VAR 3° E
THR 25R ELEV 155

INSTRUMENT
APPROACH
CHART - ICAO



MISSED APPROACH PROCEDURE

On runway track, climb to MAX. 3000; at 4.0 DME West of SDD continue climb to 4000 and LT to KLF DVOR.



OCA (OCH)	A	B	C	D
NDB-DME	730 (580)	730 (580)	730 (580)	730 (580)

DME SDD	2	3	4	5	6	7	8	9
DIST THR	1.2	2.2	3.2	4.2	5.2	6.2	7.2	8.2
ALTITUDE	590	910	1230	1550	1870	2190	2500	2820

Timing not authorized for defining the MAPt.

GS	kt	80	100	120	140	160	180
SL LO - MAPt (3.8 NM)	MIN:SEC	2:51	2:17	1:54	1:38	1:26	1:16
Rate of descent (5.2%)	ft / MIN	420	530	640	740	850	960

Correction: Communications, ED-R4 dimensions, OCA(H)-values & obstacles.