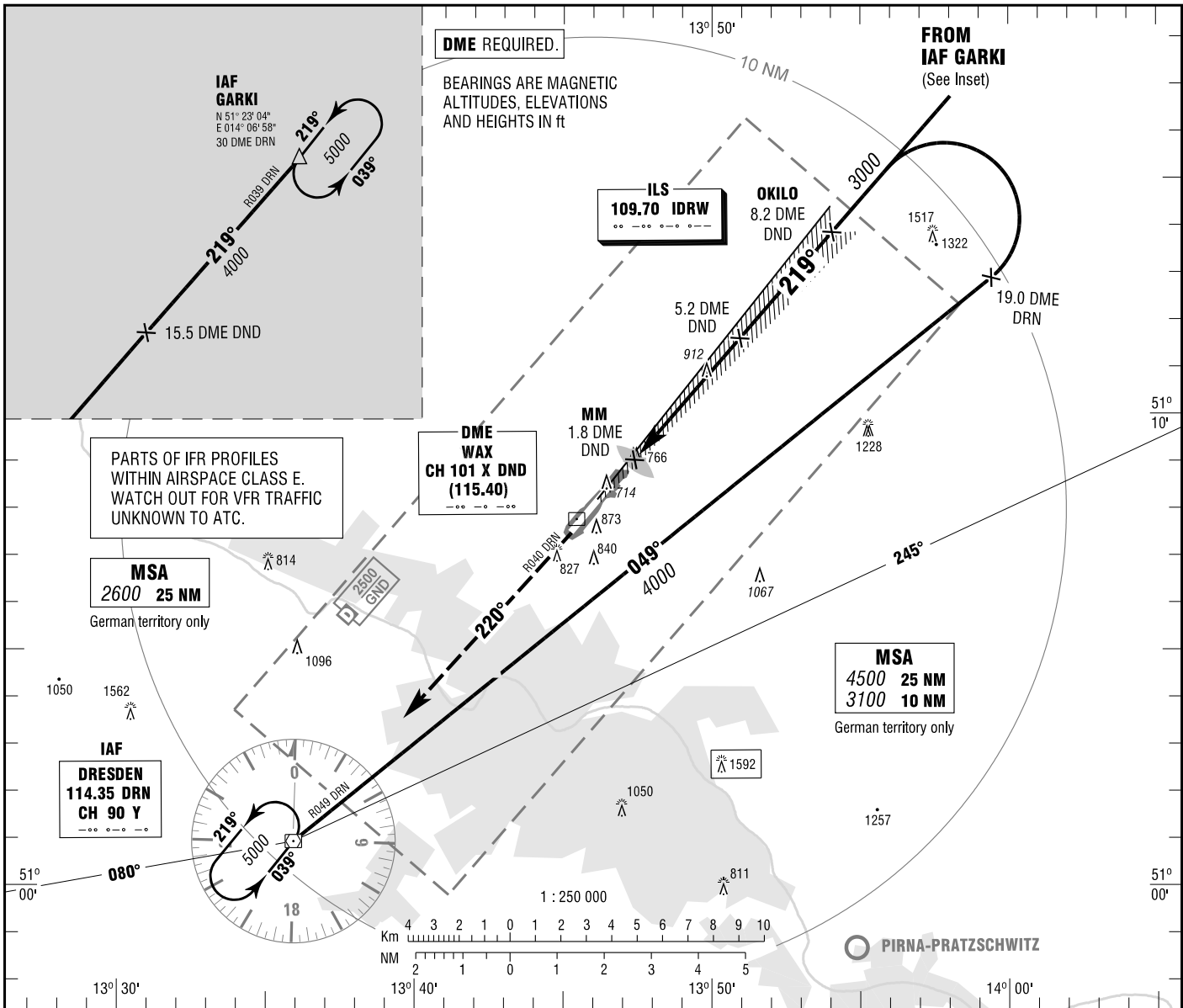


DRESDEN
ILS CAT II & III or LOC
RWY 22

ATIS 118.875 GROUND 121.975
MÜNCHEN RADAR 125.875 APRON 121.750
TOWER 122.925

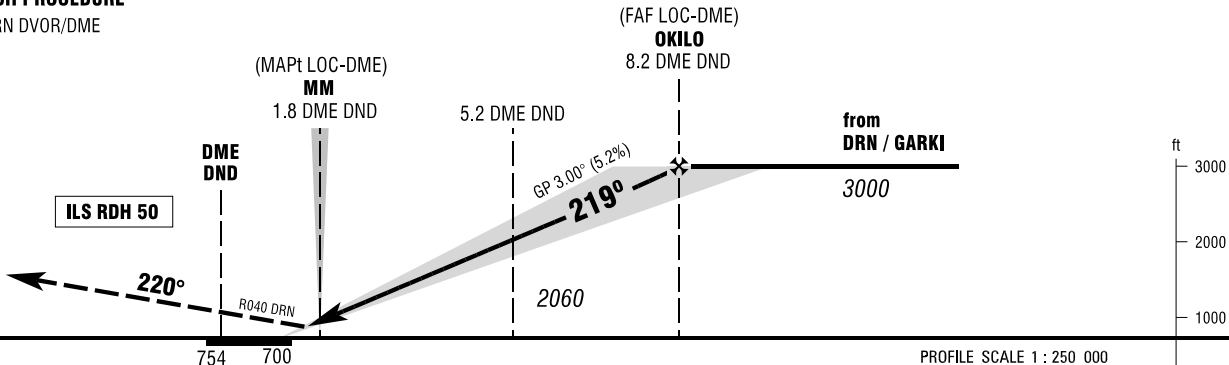
ELEV 754
OCH RELATED TO THR 22 ELEV 700
VAR 2° E

INSTRUMENT
APPROACH
CHART - ICAO



MISSED APPROACH PROCEDURE

On R040 DRN to DRN DVOR/DME
climbing to 5000.



PROFILE SCALE 1 : 250 000

OCA (OCH)	A	B	C	D	D _t
ILS CAT I	846 (146)	855 (155)	865 (165)	875 (175)	
ILS CAT II	757 (57)	773 (73)	787 (87)	800 (100)	
LOC-DME	1160 (460)	1160 (460)	1160 (460)	1160 (460)	
CIRCLING OCH RELATED TO AD ELEV	1310 (560)	1360 (600)	1460 (710)	1460 (710)	

CAT IIIA AND CAT IIIB (MNM RVR 75M) APPROVED.

DME DME DND	2	3	4	5	6	7	8	
DIST THR	0.9	1.9	2.9	3.9	4.9	5.9	6.9	
ALTITUDE	1040	1360	1680	2000	2320	2630	2950	
LOC-DME: Timing not authorized for defining the MAPt.								
GS	kt	80	100	120	140	160	180	
5.2 DME DND - THR (4.1 NM)	MIN:SEC	3:05	2:28	2:03	1:45	1:32	1:22	
Rate of descent (5.2%)	ft / MIN	420	530	640	740	850	960	

Correction: Communications.