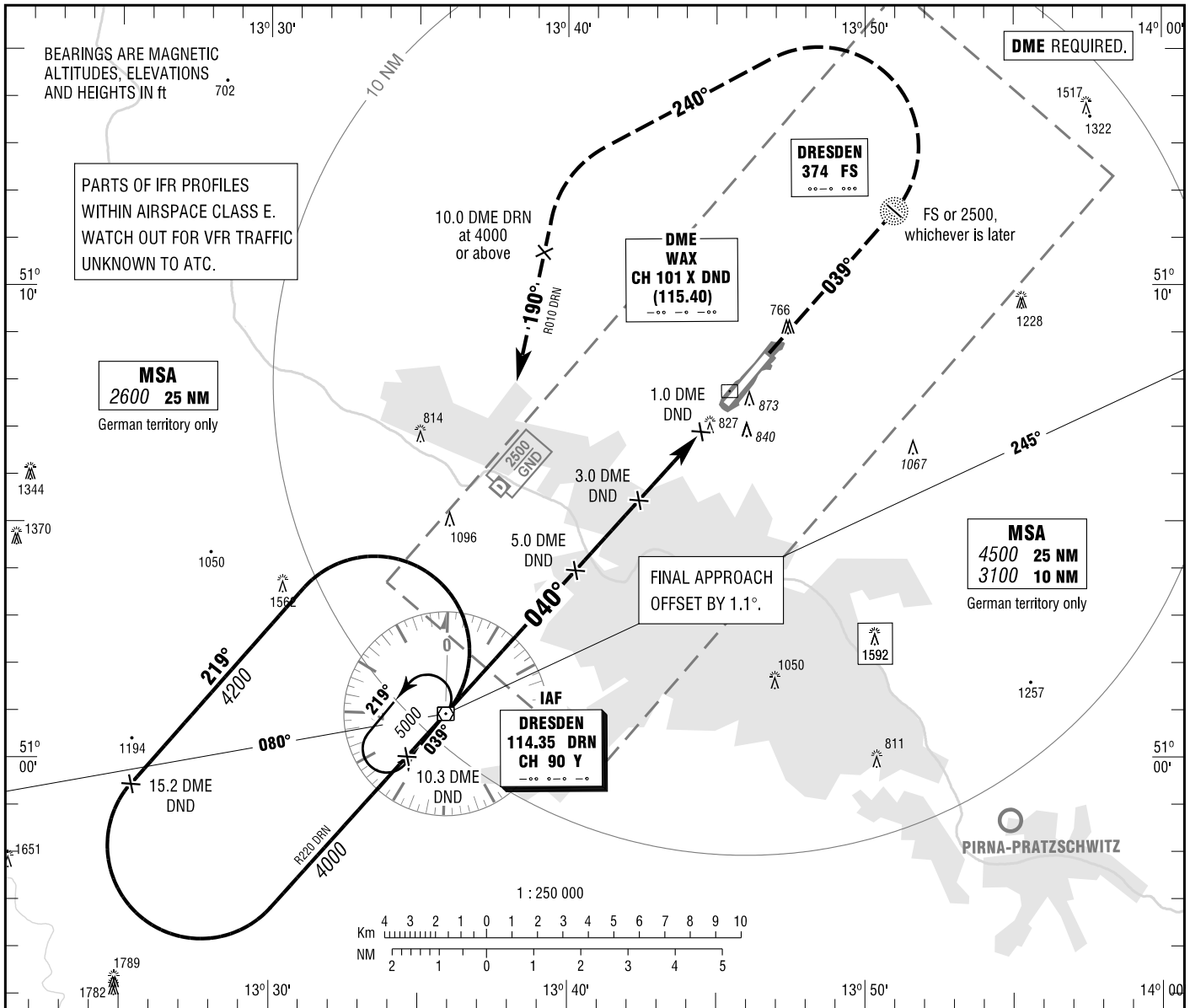


INSTRUMENT
APPROACH
CHART - ICAO

VAR 2° E
ELEV 754
OCH RELATED TO
THR 04 ELEV 754

ATIS 118.875
MÜNCHEN RADAR 125.875
TOWER 122.925
GROUND 121.975
APRON 121.750

DRESDEN
VOR
RWY 04



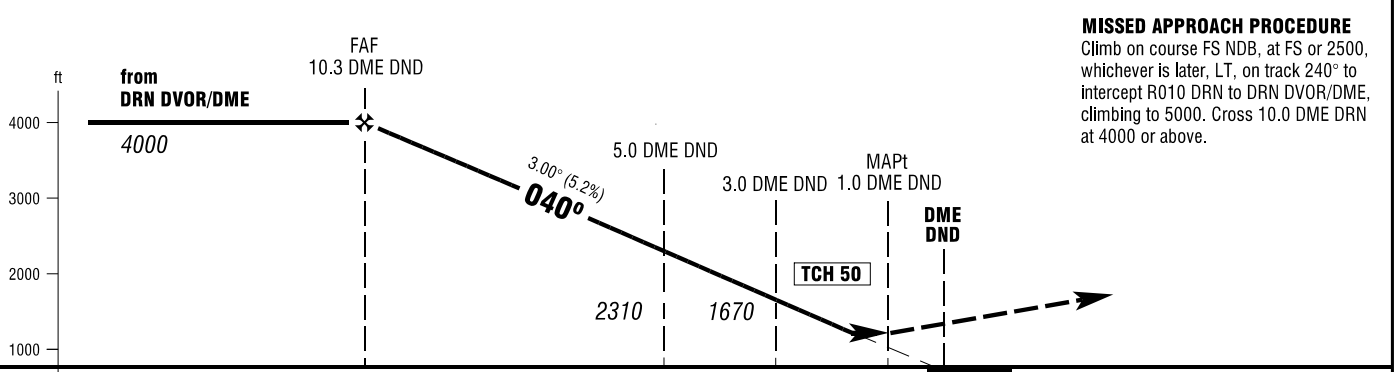
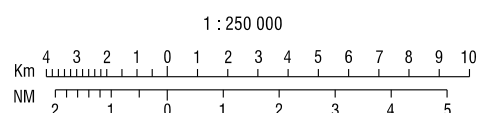
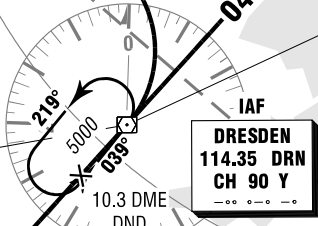
BEARINGS ARE MAGNETIC
ALTITUDES, ELEVATIONS
AND HEIGHTS IN ft

PARTS OF IFR PROFILES
WITHIN AIRSPACE CLASS E.
WATCH OUT FOR VFR TRAFFIC
UNKNOWN TO ATC.

MSA
2600 25 NM
German territory only

MSA
4500 25 NM
3100 10 NM
German territory only

FINAL APPROACH
OFFSET BY 1.1°.



MISSED APPROACH PROCEDURE
Climb on course FS NDB, at FS or 2500,
whichever is later, LT, on track 240° to
intercept R010 DRN to DRN DVOR/DME,
climbing to 5000. Cross 10.0 DME DRN
at 4000 or above.

PROFILE SCALE 1 : 250 000
NM 14 13 12 11 10 9 8 7 6 5 4 3 2 1 0 1 2 3 4 5 6 NM

OCA (OCH)	A	B	C	D
VOR-DME	1090 (340)	1090 (340)	1120 (370)	1120 (370)
CIRCLING OCH RELATED TO AD ELEV	1310 (560)	1360 (600)	1460 (710)	1460 (710)

DME DND	10	9	8	7	6	5	4	3	2
DIST THR	9.7	8.7	7.7	6.7	5.7	4.7	3.7	2.7	1.7
ALTITUDE	3900	3580	3260	2940	2620	2310	1990	1670	1350

Timing not authorized for defining the MAPt.

GS	kt	80	100	120	140	160	180
3.0 DME - 1.0 DME (2.0 NM)	MIN:SEC	1:30	1:12	1:00	0:51	0:45	0:40
Rate of descent (5.2%)	ft / MIN	420	530	640	740	850	960

Correction: Communications.