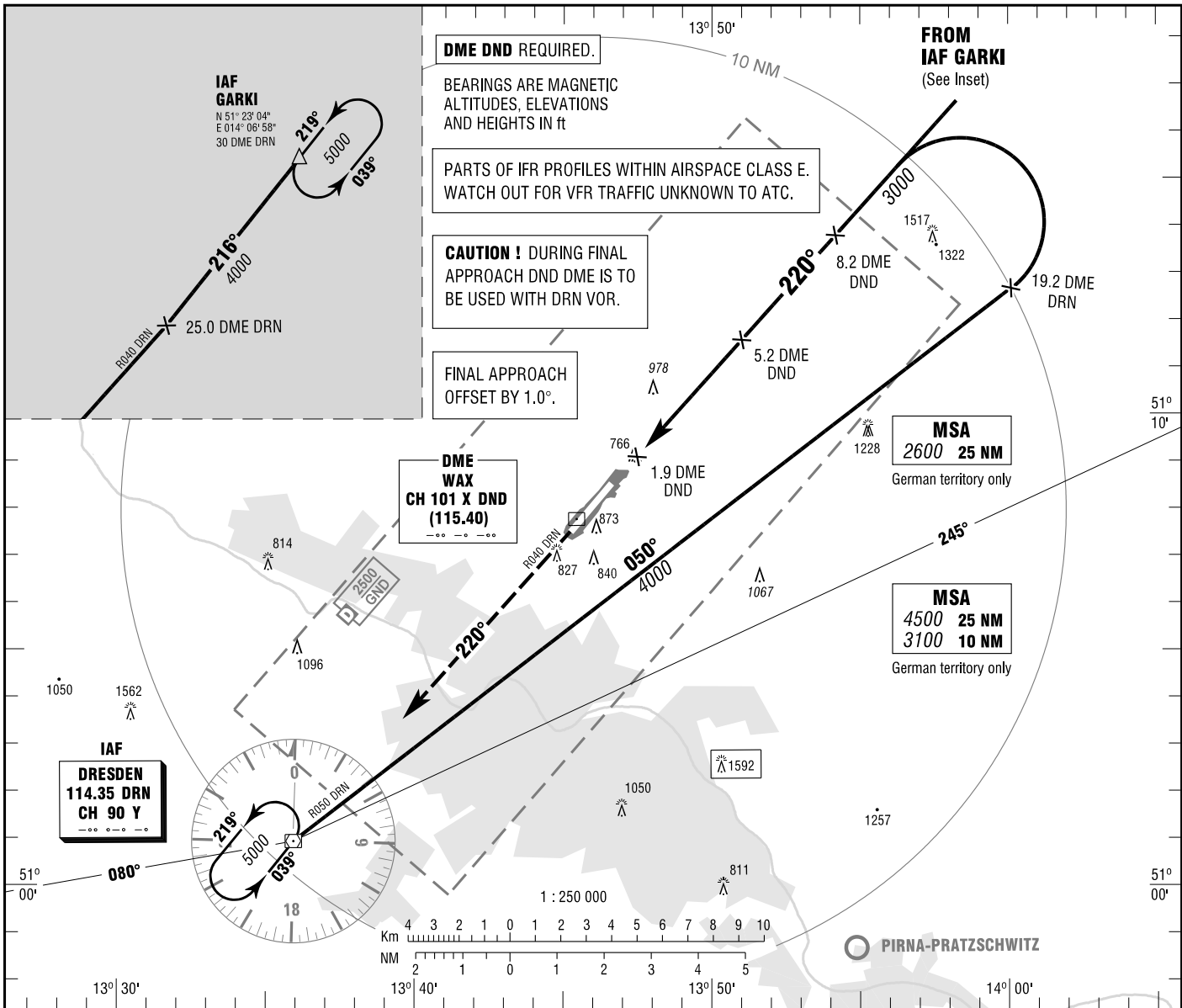


DRESDEN  
VOR  
RWY 22

ATIS 118.875 GROUND 121.975  
MÜNCHEN RADAR 125.875 APRON 121.750  
TOWER 122.925

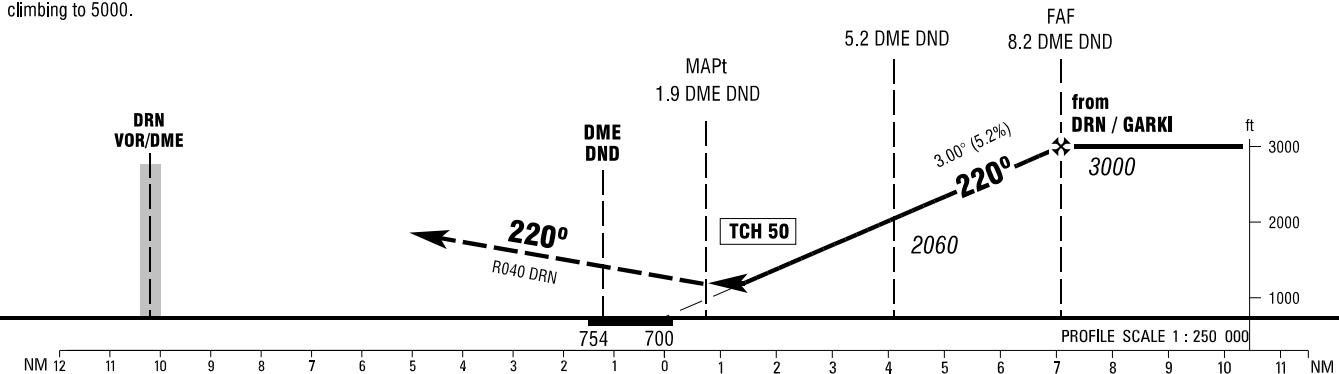
ELEV 754  
OCH RELATED TO VAR 2° E  
THR 22 ELEV 700

INSTRUMENT  
APPROACH  
CHART - ICAO



**MISSED APPROACH PROCEDURE**

On R040 DRN to DRN DVOR/DME  
climbing to 5000.



OCA (OCH)	A	B	C	D
VOR-DME	1230 (530)	1230 (530)	1230 (530)	1230 (530)
CIRCLING OCH RELATED TO AD ELEV	1310 (560)	1360 (600)	1460 (710)	1460 (710)

DME DND	3	4	5	6	7	8
DIST THR	1.9	2.9	3.9	4.9	5.9	6.9
ALTITUDE	1360	1680	2000	2320	2630	2950

Timing not authorized for defining the MAPt.

GS	kt	80	100	120	140	160	180
5.2 DME DND - MAPt (3.3 NM)	MIN:SEC	2:29	1:59	1:39	1:25	1:14	1:06
Rate of descent (5.2%)	ft / MIN	420	530	640	740	850	960

Correction: Communications.