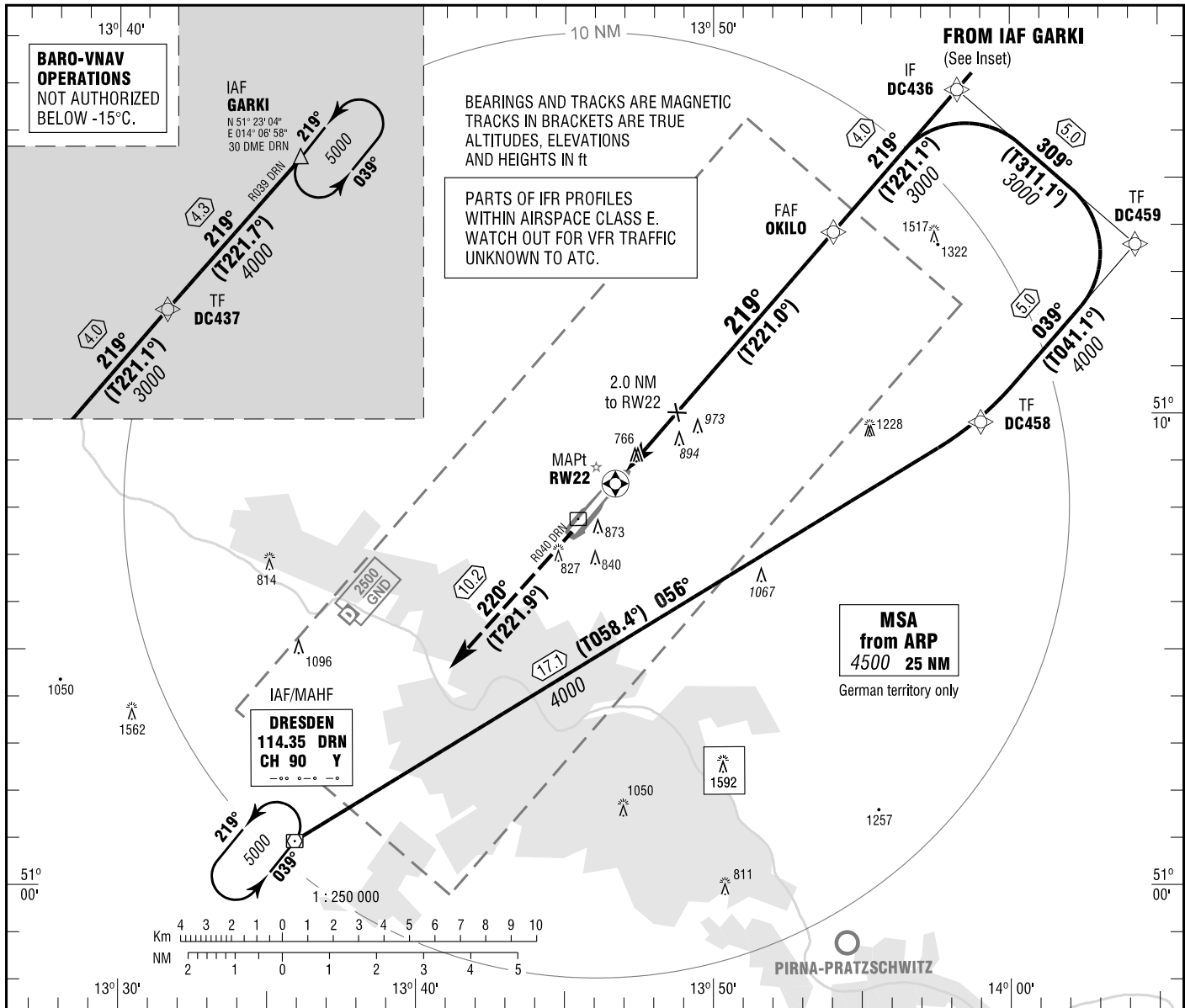


DRESDEN  
RNAV (GPS)  
RWY 22

ATIS 118.875 GROUND 121.975  
MÜNCHEN RADAR 125.875 APRON 121.750  
TOWER 122.925

ELEV 754  
OCH RELATED TO THR 22 ELEV 700  
VAR 2° E

INSTRUMENT  
APPROACH  
CHART - ICAO

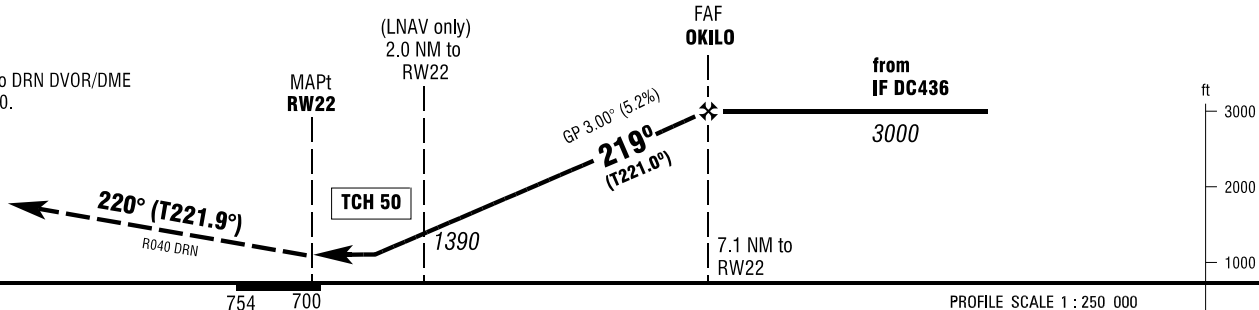


**MISSED APPROACH PROCEDURE**

**RNAV (GPS):**  
Climb on track 220° to DRN to 5000.

DRN - [5000].

**NON-RNAV:**  
On R040 DRN to DRN DVOR/DME climbing to 5000.



OCA (OCH)	A	B	C	D
LNAV	1150 (450)	1150 (450)	1150 (450)	1150 (450)
LNAV / VNAV	1140 (440)	1140 (440)	1140 (440)	1140 (440)
CIRCLING OCH RELATED TO AD ELEV	1310 (560)	1360 (600)	1460 (710)	1460 (710)

DIST THR / RW22	2	3	4	5	6	7		
ALTITUDE	1390	1710	2030	2350	2670	2980		

Timing not authorized for defining the MAPt.

GS	kt	80	100	120	140	160	180
FAF OKILO - RW22 (7.1 NM)	MIN:SEC	5:20	4:16	3:33	3:03	2:40	2:22
Rate of descent (5.2%)	ft / MIN	420	530	640	740	850	960

Correction: Communications.