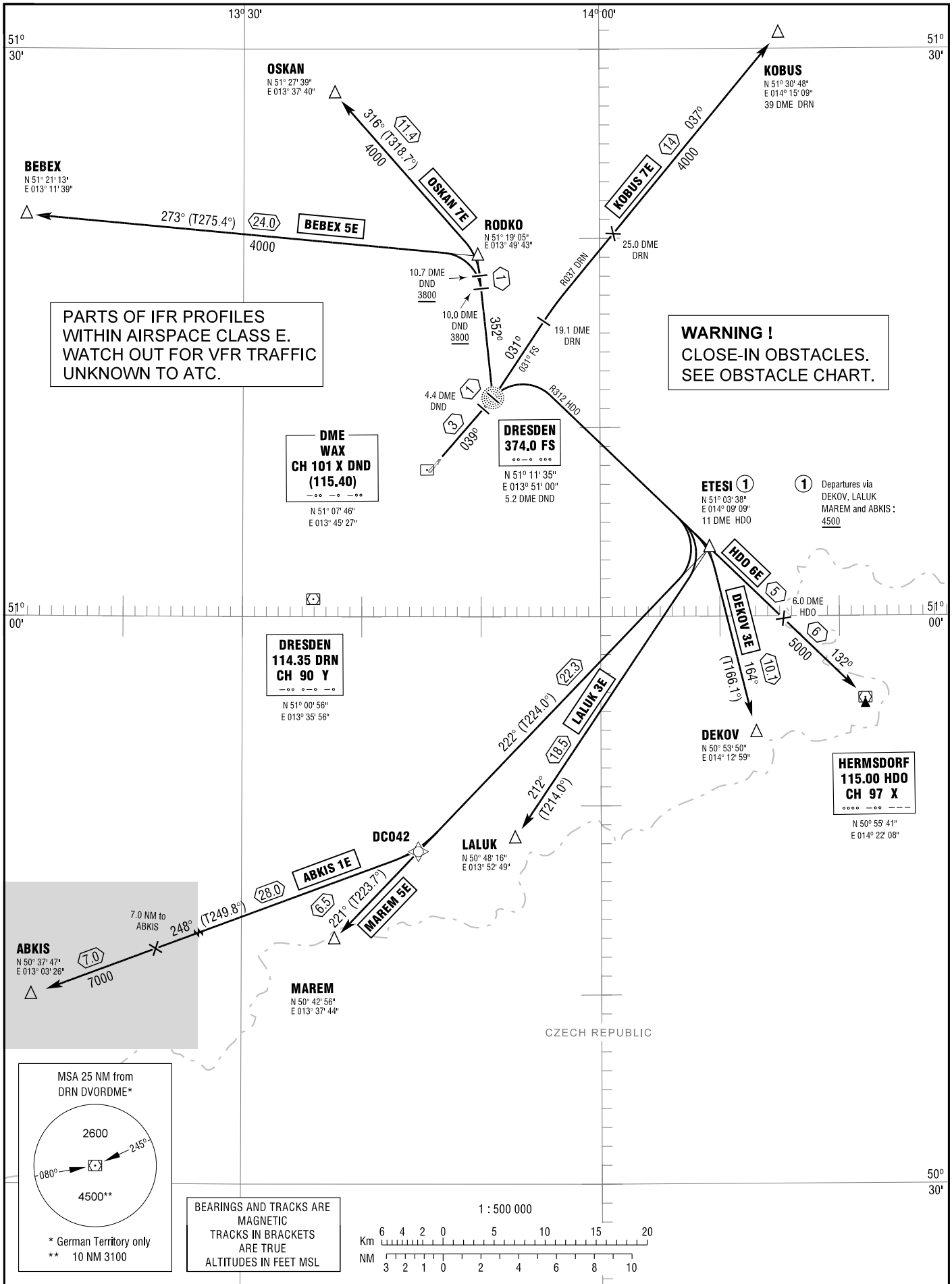


STANDARD DEPARTURE
CHART - INSTRUMENT
(SID)

TRANSITION
ALTITUDE 5000
VAR 2° E

ATIS	118.875	TOWER	122.925
APRON	121.750	MÜNCHEN RADAR	125.625
GROUND	121.975		

DRESDEN
RWY 04



PARTS OF IFR PROFILES
WITHIN AIRSPACE CLASS E.
WATCH OUT FOR VFR TRAFFIC
UNKNOWN TO ATC.

WARNING !
CLOSE-IN OBSTACLES.
SEE OBSTACLE CHART.

① Departures via
DEKOV, LALUK
MAREM and ABKIS :
4500