

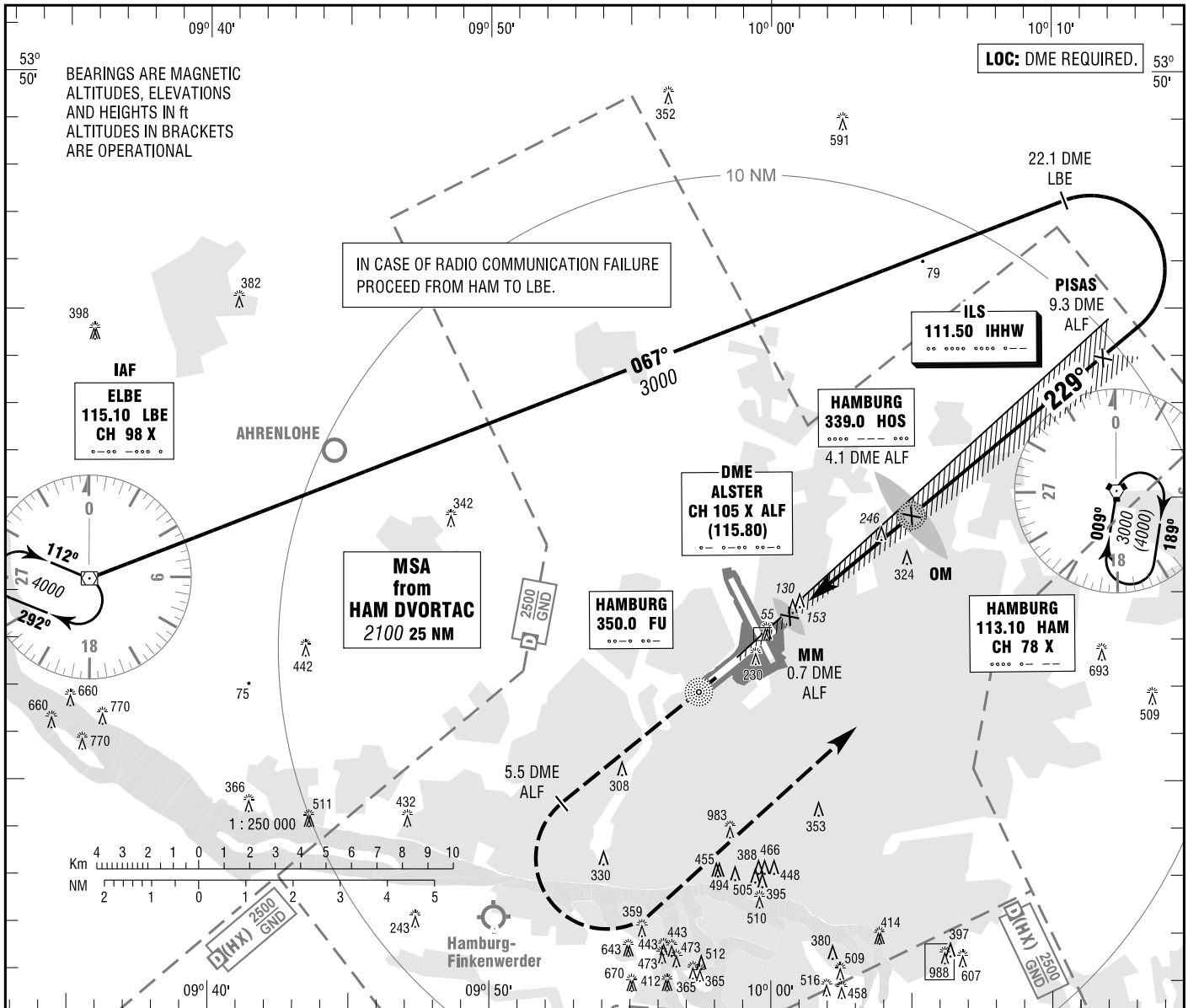
INSTRUMENT
APPROACH
CHART - ICAO

VAR 2° E

ELEV 53
OCH RELATED TO
THR 23 ELEV 43

ATIS	123.125	TOWER	126.850
BREMEN RADAR	134.250	GROUND	121.800
DIRECTOR	136.675	APRON	121.700
	118.200		

HAMBURG
ILS CAT II & III or LOC
RWY 23



MISSED APPROACH PROCEDURE

Climb straight ahead via FU to 5.5 DME ALF;
LT to HAM climbing to 4000.

(MAPt LOC-DME)

MM
0.7 DME ALF

OM
HOS NDB
4.1 DME ALF

(FAF LOC-DME)

PISAS
9.3 DME ALF

from
LBE

3000

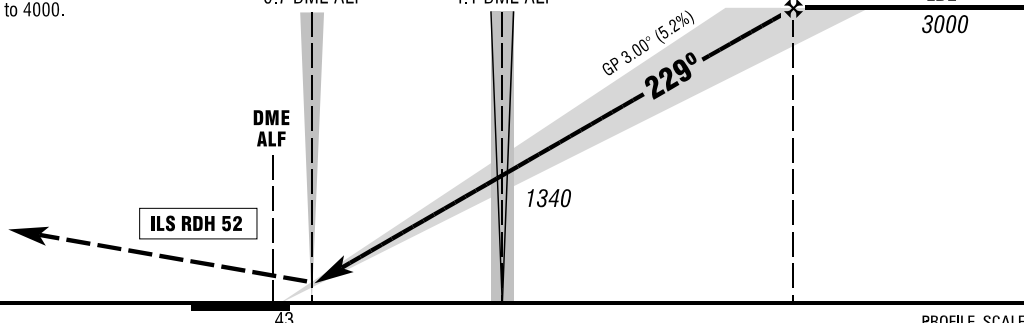
ft

3000

2000

1000

0



NM 6 5 4 3 2 1 0 1 2 3 4 5 6 7 8 9 10 11 12 13 14 NM

OCA (OCH)	A	B	C	D	D _L
ILS CAT I	262 (219)	271 (228)	281 (238)	291 (248)	314 (271)
ILS CAT II	98 (55)	114 (71)	127 (84)		140 (97)
LOC-DME	500 (450)	500 (450)	500 (450)	500 (450)	

DME ALF	2	3	4	5	6	7	8	9
DIST THR	1.8	2.8	3.8	4.8	5.8	6.8	7.8	8.8
ALTITUDE	670	990	1310	1630	1950	2270	2580	2900

LOC-DME: Timing not authorized for defining the MAPt.

GS	kt	80	100	120	140	160	180
OM - THR (3.9 NM)	MIN:SEC	2:56	2:20	1:57	1:40	1:28	1:18
Rate of descent (5.2%)	ft / MIN	420	530	640	740	850	960

CAT IIIa AND CAT IIIb (MNM RVR 75m) APPROVED; ILS CAT III NOT AVAILABLE FOR DL ACFT.

Correction: OCA(H) values & obstacles.