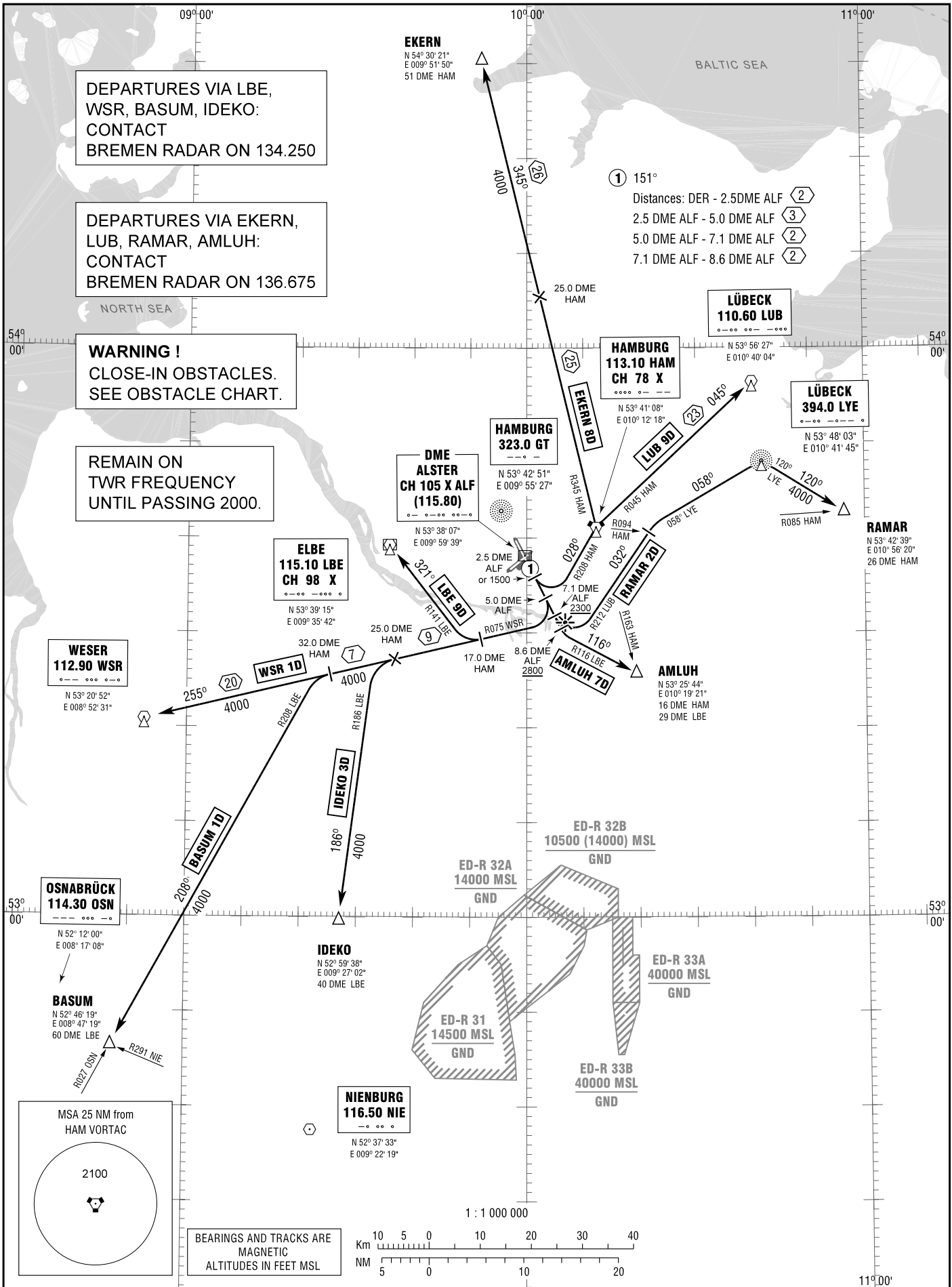


STANDARD DEPARTURE  
CHART - INSTRUMENT  
(SID)

TRANSITION  
ALTITUDE 5000  
VAR 2° E

ATIS	123.125	TOWER	126.850
APRON	121.700	BREMEN RADAR	134.250
GROUND	121.800		136.675

HAMBURG  
RWY 15



STANDARD DEPARTURE  
ROUTES – INSTRUMENT  
(SID)HAMBURG  
RWY 15

Designator	Route	After Take-Off		Remarks
		Climb to	Contact	
1	2	3	4	5
<b>EKERN 8D</b>	<b>EKERN EIGHT DELTA</b> On track 151° GT to 2.5 DME ALF or 1500 ft, whichever is later; LT, on R208 HAM to HAM (Δ); LT, on R345 HAM to EKERN (Δ). <b>GPS/FMS RNAV:</b> [A500+] - DH200[L] - [A1500+; L] - DH201- HAM[L] - EKERN.	5000 ft	Bremen Radar 136.675	Climb with 5.6%/340 ft per NM or more until passing 2800. PDG due to High Intensity Radio Transmission Area (HIRTA). If unable to comply advise ATC prior to start-up.
<b>LUB 9D</b>	<b>LÜBECK NINE DELTA</b> On track 151° GT to 2.5 DME ALF or 1500 ft, whichever is later; LT, on R208 HAM to HAM (Δ); RT, on R045 HAM to LUB (Δ). <b>GPS/FMS RNAV:</b> [A500+] - DH200[L] - [A1500+; L] - DH201 - HAM[R] - LUB.			
<b>AMLUH 7D</b>	<b>AMLUH SEVEN DELTA</b> On track 151° GT to 8.6 DME ALF; LT, on R116 LBE to AMLUH (Δ). Cross 8.6 DME ALF at 2800 or above. <b>GPS/FMS RNAV:</b> [A500+] - DH204[A2800+, L] - AMLUH.			
<b>RAMAR 2D</b>	<b>RAMAR TWO DELTA</b> On track 151° GT to 7.1 DME ALF; LT, on R212 LUB until crossing R094 HAM; RT, on track 058° LYE to LYE (Δ); RT, on track 120° LYE to RAMAR (Δ). Cross 7.1 DME ALF at 2300 or above. <b>GPS/FMS RNAV:</b> [A500+] - DH208[A2300+; L] - DH209 - DH212[R] - LYE[R] - RAMAR.			
<b>IDEKO 3D</b>	<b>IDEKO THREE DELTA</b> On track 151° GT to 5.0 DME ALF; RT, on R075 WSR to 25.0 DME HAM; LT, on R186 LBE to IDEKO (Δ). <b>GPS/FMS RNAV:</b> [A500+] - DH202[R] - DH203 - DH206[L] - IDEKO.		Bremen Radar 134.250	
<b>BASUM 1D</b>	<b>BASUM ONE DELTA</b> On track 151° GT to 5.0 DME ALF; RT, on R075 WSR to 32.0 DME HAM; LT, on R208 LBE to BASUM (Δ). <b>GPS/FMS RNAV:</b> [A500+] - DH202[R] - DH203 - DH207[L] - BASUM.			
<b>WSR 1D</b>	<b>WESER ONE DELTA</b> On track 151° GT to 5.0 DME ALF; RT, on R075 WSR to WSR (Δ). <b>GPS/FMS RNAV:</b> [A500+] - DH202[R] - DH203 - WSR.			
<b>LBE 9D</b>	<b>ELBE NINE DELTA</b> On track 151° GT to 5.0 DME ALF; RT, on R075 WSR to 17.0 DME HAM; RT, on R141 LBE to LBE (Δ). <b>GPS/FMS RNAV:</b> [A500+] - DH202[R] - DH203 - DH205[R] - LBE.			

(Sample: DH200 fly-over way point)

Remain on TWR frequency until passing 2000, then contact Bremen Radar.