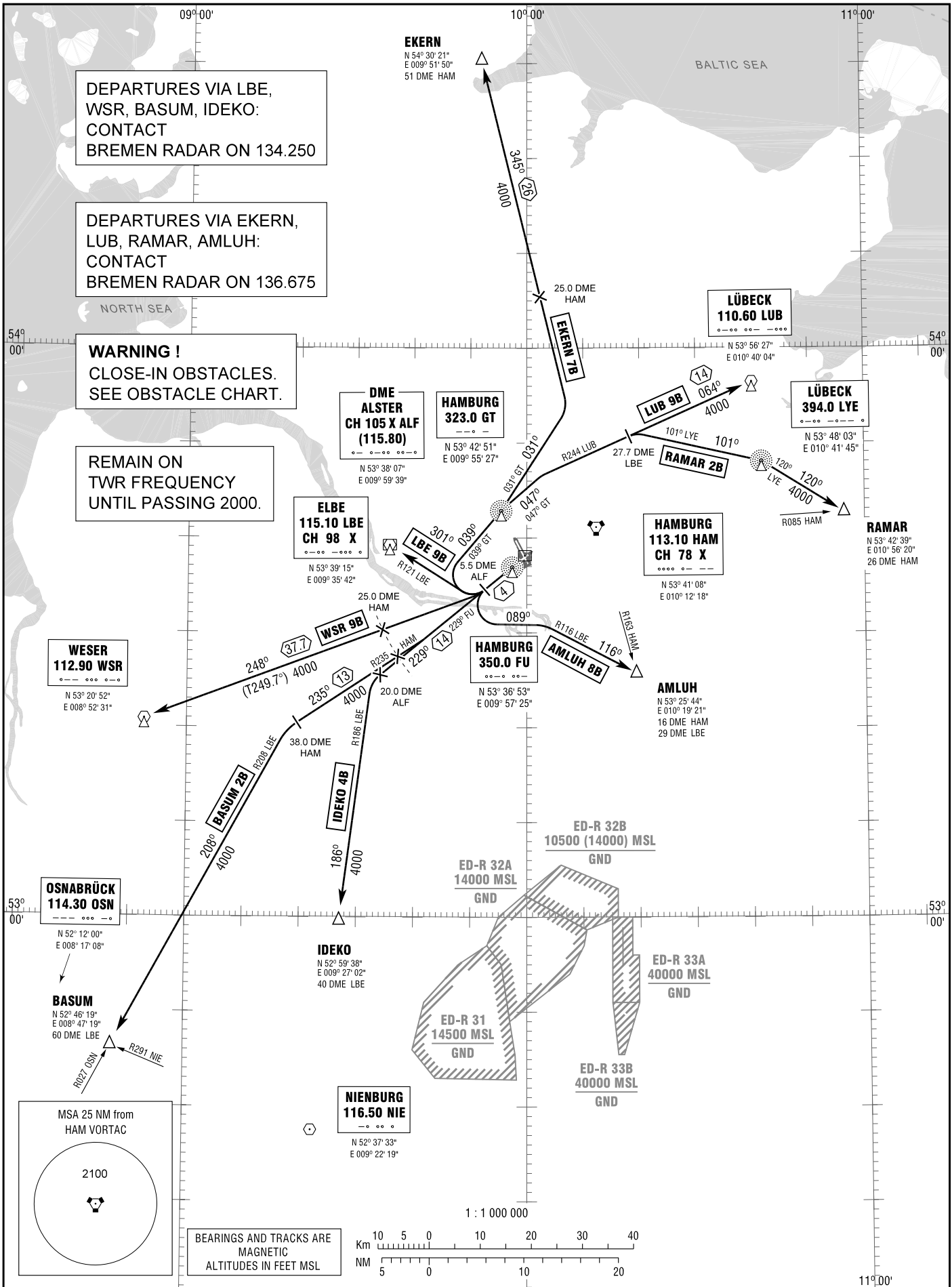


STANDARD DEPARTURE
CHART - INSTRUMENT
(SID)

TRANSITION
ALTITUDE 5000
VAR 2° E

ATIS	123.125	TOWER	126.850
APRON	121.700	BREMEN RADAR	134.250
GROUND	121.800		136.675

HAMBURG
RWY 23



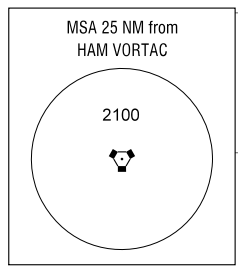
DEPARTURES VIA LBE,
WSR, BASUM, IDEKO:
CONTACT
BREMEN RADAR ON 134.250

DEPARTURES VIA EKERN,
LUB, RAMAR, AMLUH:
CONTACT
BREMEN RADAR ON 136.675

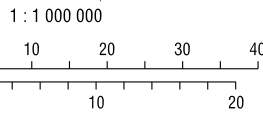
WARNING !
CLOSE-IN OBSTACLES.
SEE OBSTACLE CHART.

REMAIN ON
TWR FREQUENCY
UNTIL PASSING 2000.

Correction: Conventional procedure unchanged.



BEARINGS AND TRACKS ARE
MAGNETIC
ALTITUDES IN FEET MSL



STANDARD DEPARTURE
ROUTES – INSTRUMENT
(SID)HAMBURG
RWY 23

Designator	Route	After Take-Off		Remarks		
		Climb to	Contact			
1	2	3	4	5		
EKERN 7B	EKERN SEVEN BRAVO Climb straight ahead via FU to 5.5 DME ALF; RT, on track 039° GT to GT (Δ); on track 031° GT to intercept R345 HAM to EKERN (Δ). GPS/FMS RNAV: [A500+] - <u>DH111[R]</u> - DH102 - GT[L] - DH103[L] - EKERN.	5000 ft	Bremen Radar 136.675			
LUB 9B	LÜBECK NINE BRAVO Climb straight ahead via FU to 5.5 DME ALF; RT, on track 039° GT to GT (Δ); on track 047° GT to intercept R244 LUB to LUB (Δ). GPS/FMS RNAV: [A500+] - <u>DH111[R]</u> - DH102 - GT[R] - DH104[R] - LUB.					
AMLUH 8B	AMLUH EIGHT BRAVO Climb straight ahead via FU to 5.5 DME ALF; LT, on track 089° to intercept R116 LBE to AMLUH (Δ). GPS/FMS RNAV: [A500+] - <u>DH111[L]</u> - DH108 - DH109[R] - AMLUH.					
RAMAR 2B	RAMAR TWO BRAVO Climb straight ahead via FU to 5.5 DME ALF; RT, on track 039° GT to GT(Δ); on track 047° GT to intercept R244 LUB to 27.7 DME LBE; RT, on track 101° LYE to LYE (Δ); RT, on track 120° LYE to RAMAR(Δ). GPS/FMS RNAV: [A500+] - <u>DH111[R]</u> - DH102 - GT[R] - DH104[R] - DH110[R] - LYE[R] - RAMAR.					
IDEKO 4B	IDEKO FOUR BRAVO Climb straight ahead via FU on track 229° FU to 20.0 DME ALF; LT, on R186 LBE to IDEKO (Δ). GPS/FMS RNAV: [A500+] - <u>DH106[L]</u> - IDEKO.		Bremen Radar 134.250			
BASUM 2B	BASUM TWO BRAVO Climb straight ahead via FU on track 229° FU to intercept R235 HAM; on R235 HAM to 38.0 DME HAM; LT, on R208 LBE to BASUM (Δ). GPS/FMS RNAV: [A500+] - DH105[R] - DH107[L] - BASUM.					
WSR 9B	WESER NINE BRAVO Climb straight ahead via FU to 5.5 DME ALF; RT, on track 248° to WSR (Δ). GPS/FMS RNAV: [A500+] - DH100[R] - WSR.					After FU NDB or passing 2000, whichever is later, B-RNAV equipment necessary.
LBE 9B	ELBE NINE BRAVO Climb straight ahead via FU to 5.5 DME ALF; RT, on R121 LBE to LBE (Δ). GPS/FMS RNAV: [A500+] - <u>DH111[R]</u> - DH101 - LBE.					
(Sample: <u>DH111</u> fly-over way point)						
Remain on TWR frequency until passing 2000, then contact Bremen Radar.						