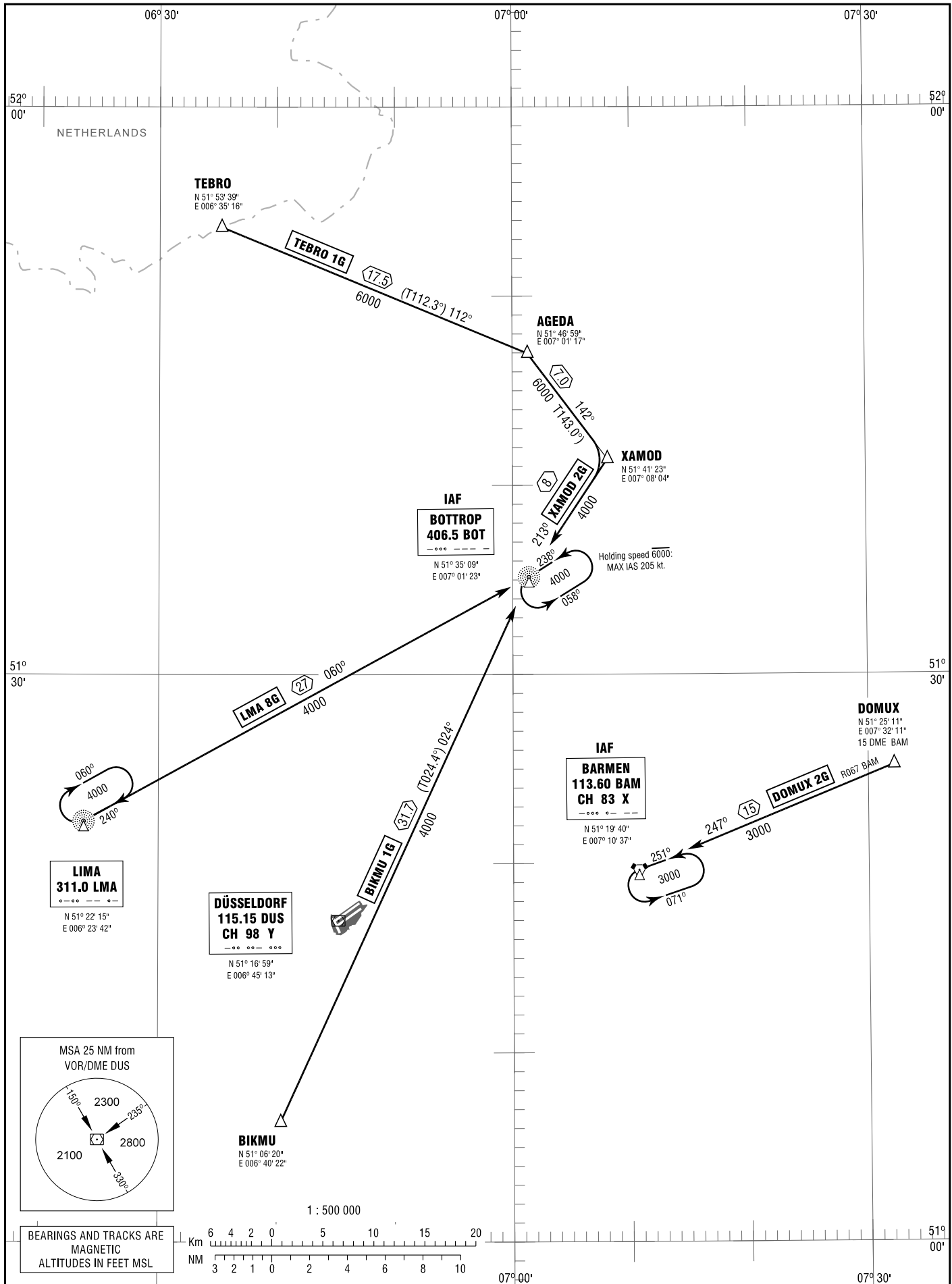


DÜSSELDORF
RWY 23L/23R

ATIS	123.775
LANGEN RADAR	115.150 (DUS) 133.775 128.500

TRANSITION
ALTITUDE 5000
VAR 1° E

STANDARD ARRIVAL
CHART - INSTRUMENT
(STAR)



Correction: Communications.

STANDARD ARRIVAL
ROUTES – INSTRUMENT
(STAR)DÜSSELDORF
RWY 23L/23R

Designator	Identification Significant Points	Mag (True) Track	Dist NM	MNM IFR Cruising Level	Remarks
1	2	3	4	5	6
LMA 8G	LIMA EIGHT GOLF △ Lima NDB △ Bottrop NDB				
		060	27	4000	
TEBRO 1G	TEBRO ONE GOLF △ TEBRO △ AGEDA △ XAMOD △ Bottrop NDB				BRNAV equipment necessary.
		112 (112.3)	17.5	6000	
		142 (143.0)	7.0		
		213	8	4000	
XAMOD 2G	XAMOD TWO GOLF △ XAMOD △ Bottrop NDB				
		213	8	4000	
DOMUX 2G	DOMUX TWO GOLF △ DOMUX △ Barmen DVORTAC				
		247	15	3000	
BIKMU 1G	BIKMU ONE GOLF △ BIKMU △ Bottrop NDB				BRNAV equipment necessary.
		024 (024.4)	31.7	4000	