

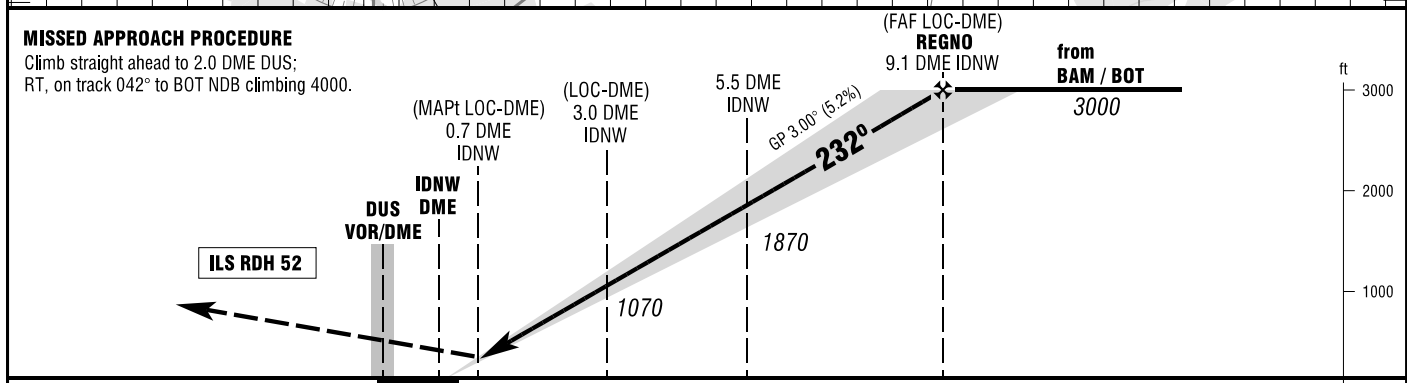
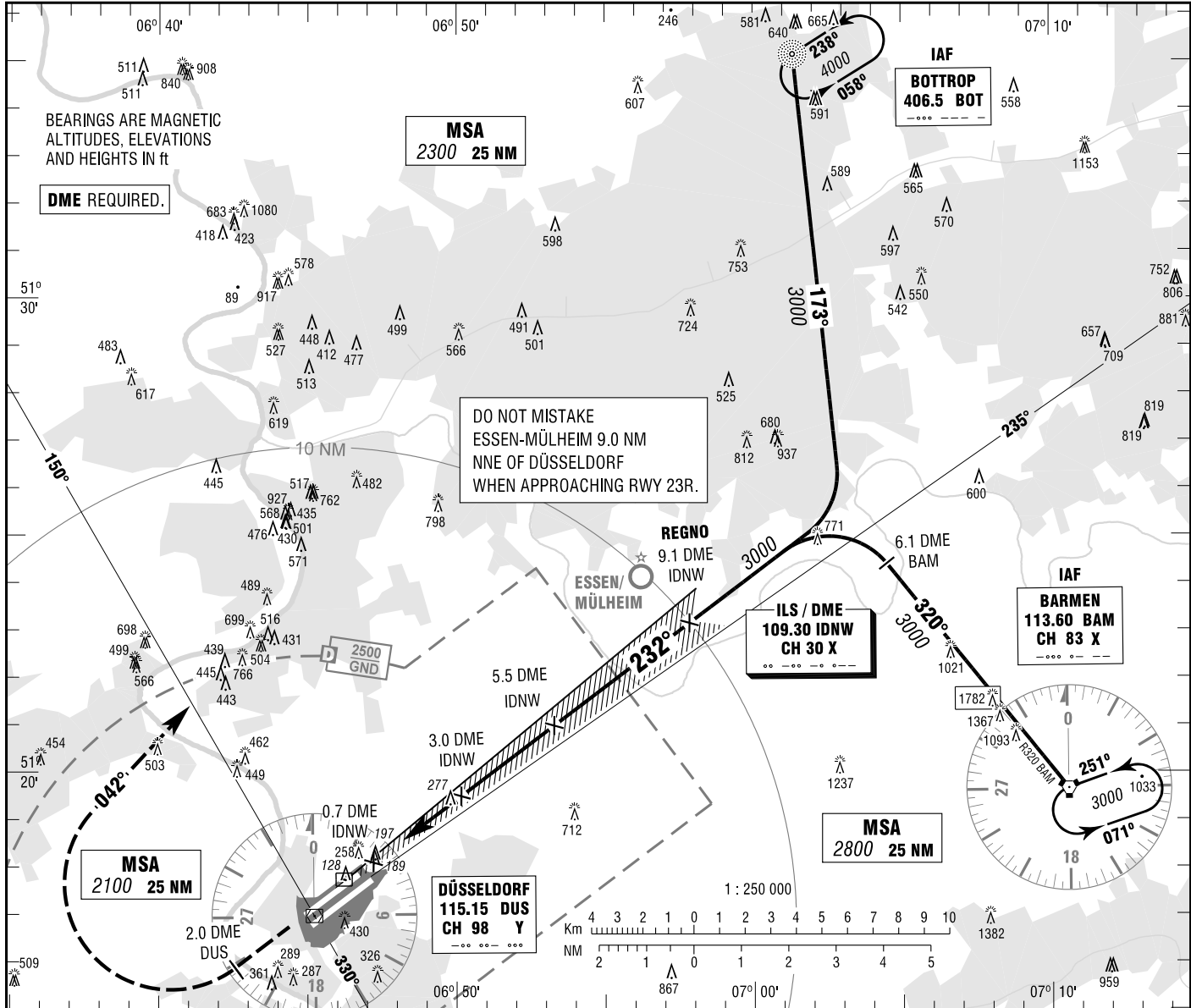
**DÜSSELDORF**  
ILS CAT II & III or LOC  
RWY 23R

ATIS	123.775	DIRECTOR	128.650
LANGEN RADAR	115.150 (DUS)	TOWER	118.300
	133.775	GROUND	121.900
	128.550	DELIVERY	121.775

ELEV 147  
OCH RELATED TO  
THR 23R ELEV 124

VAR 1° E

**INSTRUMENT  
APPROACH  
CHART - ICAO**



OCA (OCH)	A	B	C	D	D <sub>L</sub>
ILS/DME CAT I	322 (198)	331 (207)	354 (230)	364 (240)	367 (243)
ILS/DME CAT II	170 (46)	186 (62)	199 (75)	212 (88)	212 (88)
LOC-DME	510 (390)	510 (390)	510 (390)	510 (390)	

DME IDNW	2	3	4	5	6	7	8	9
DIST THR	1.8	2.8	3.8	4.8	5.8	6.8	7.8	8.8
ALTITUDE	750	1070	1390	1710	2030	2350	2660	2980

GS	kt	80	100	120	140	160	180
5.5 DME IDNW - THR (5.3 NM)	MIN:SEC	3:59	3:11	2:39	2:16	1:59	1:46
Rate of descent (5.2%)	ft / MIN	420	530	640	740	850	960

CAT IIIA APPROVED.

Correction: Variation change, OCA (OCH), missed approach procedure, tracks.