

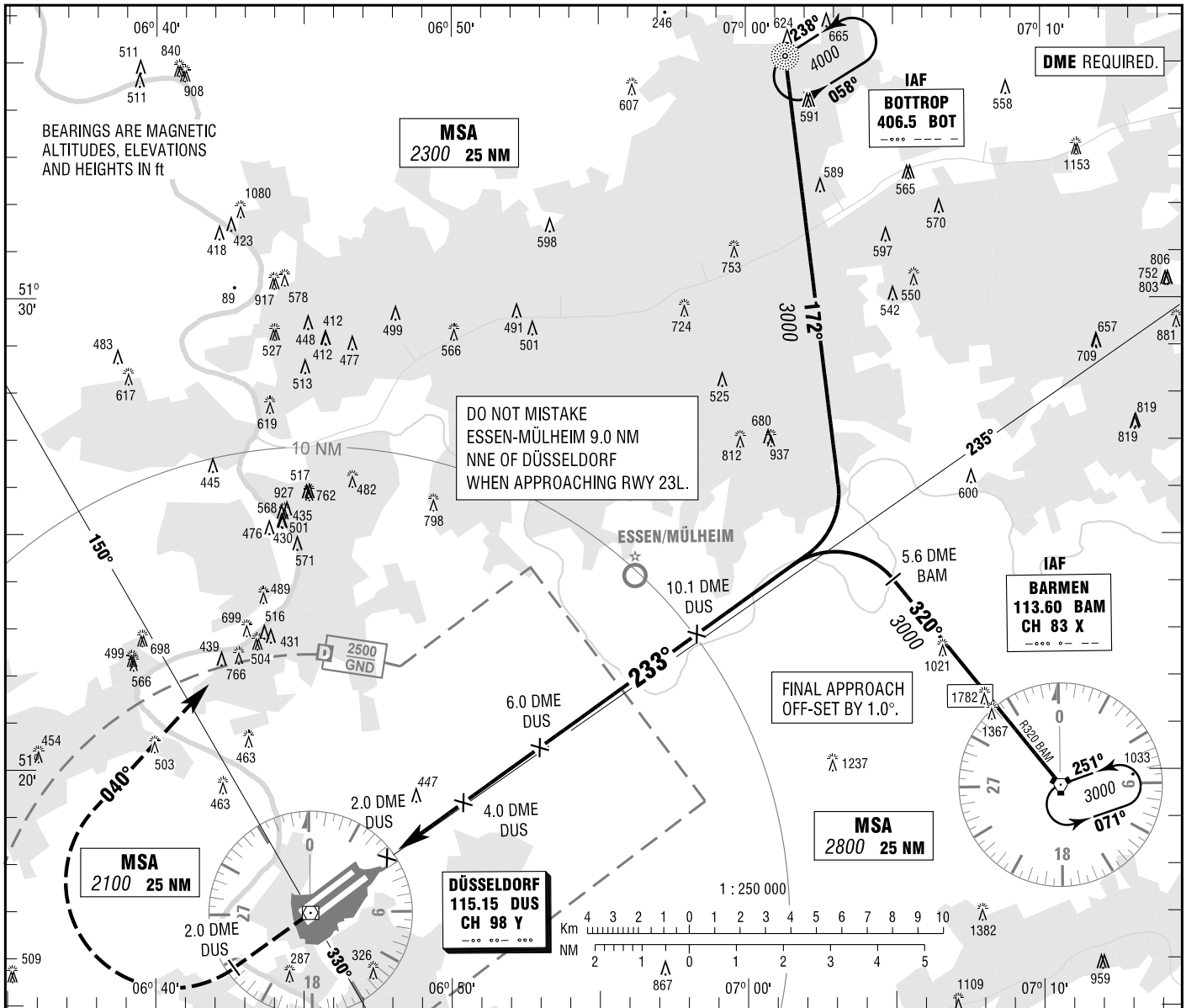
INSTRUMENT
APPROACH
CHART - ICAO

VAR 1° E

ELEV 147
OCH RELATED TO
THR 23L ELEV 138

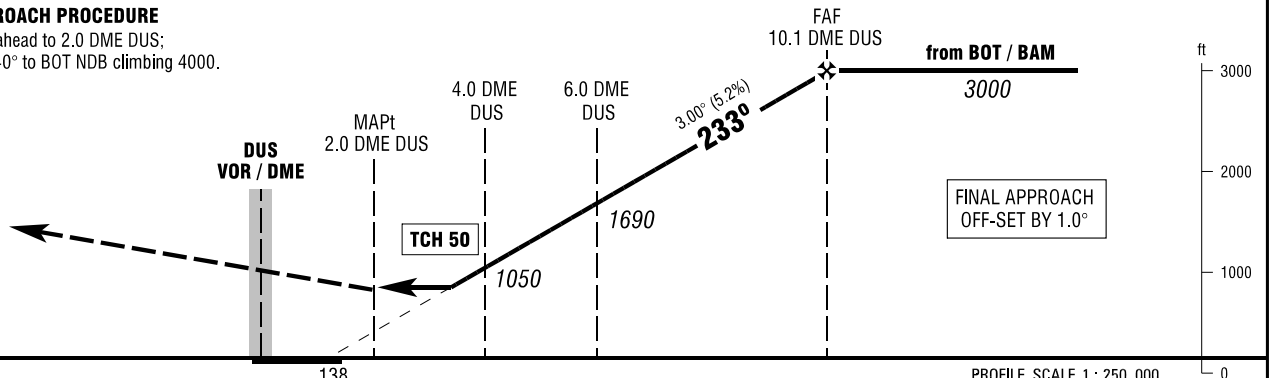
ATIS	123.775	DIRECTOR	128.650
LANGEN RADAR	115.150 (DUS)	TOWER	118.300
	133.775	GROUND	121.900
	128.550	DELIVERY	121.775

DÜSSELDORF
VOR
RWY 23L



MISSED APPROACH PROCEDURE

Climb straight ahead to 2.0 DME DUS;
RT, on track 040° to BOT NDB climbing 4000.



OCA (OCH)	A B C D							
	700 (560)	700 (560)	700 (560)	700 (560)				
VOR/DME								
DME DUS	3	4	5	6	7	8	9	10
DIST THR	1.7	2.7	3.7	4.7	5.7	6.7	7.7	8.7
ALTITUDE	730	1050	1370	1690	2010	2330	2640	2960
Timing not authorized for defining the MAPt.								
GS	kt	80	100	120	140	160	180	
6.0 DME DUS - MAPt (4.0 NM)	MIN:SEC	3:00	2:24	2:00	1:43	1:30	1:20	
Rate of descent (5.24%)	ft / MIN	420	530	640	740	850	960	

Correction: Variation change, OCA (OCH), missed approach procedure, tracks.