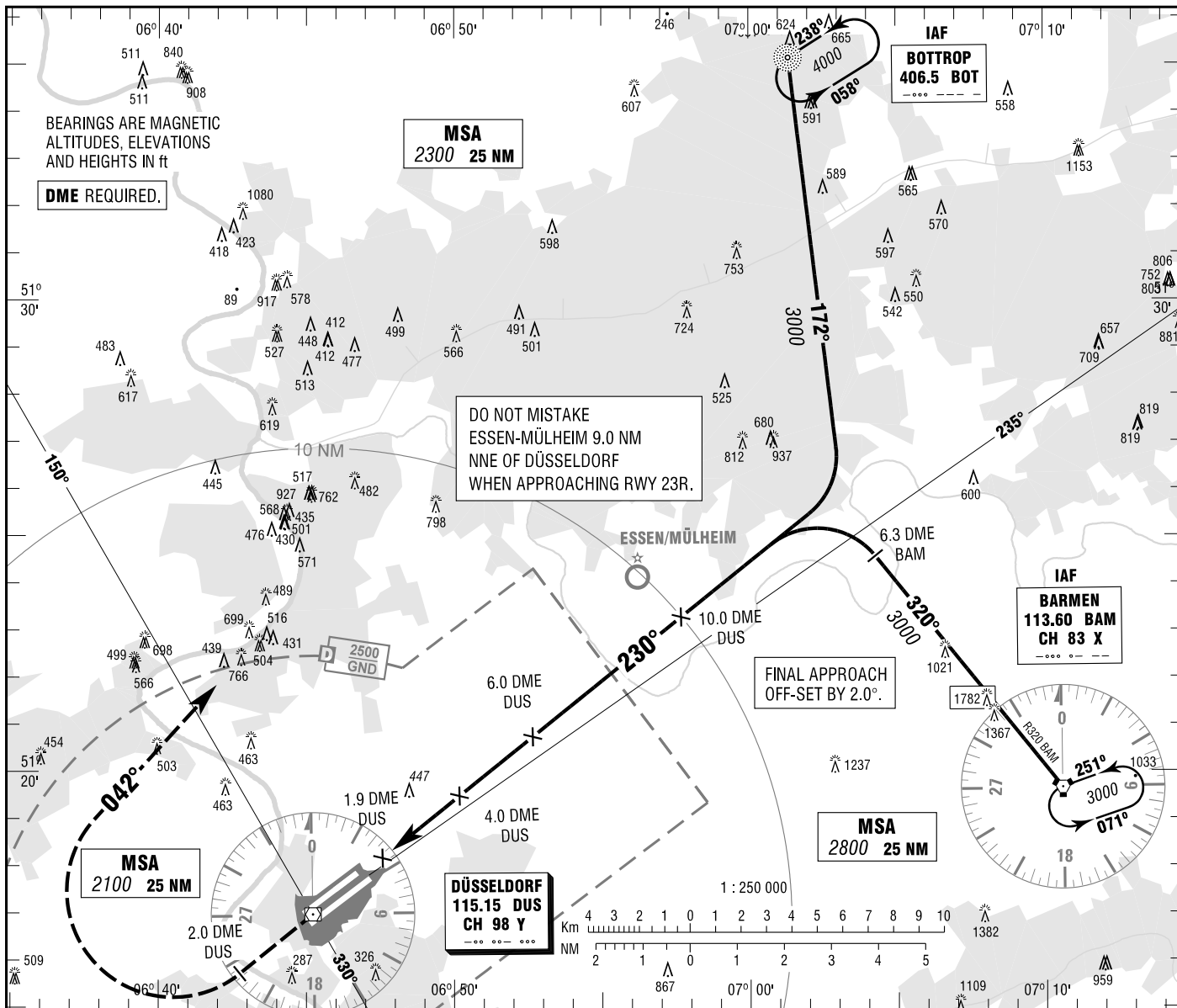


DÜSSELDORF
VOR
RWY 23R

ATIS	123.775	DIRECTOR	128.650
LANGEN RADAR	115.150 (DUS)	TOWER	118.300
	133.775	GROUND	121.900
	128.550	DELIVERY	121.775

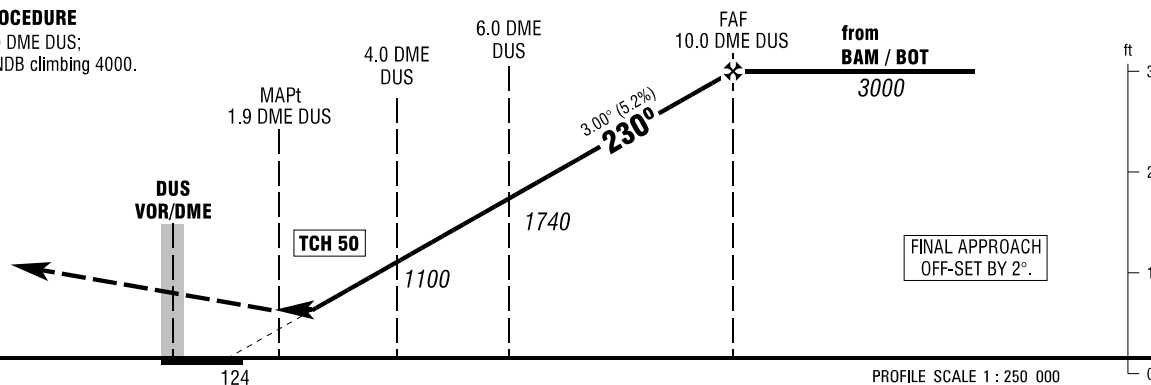
ELEV 147
OCH RELATED TO VAR 1° E
THR 23R ELEV 124

INSTRUMENT
APPROACH
CHART - ICAO



MISSED APPROACH PROCEDURE

Climb straight ahead to 2.0 DME DUS;
RT, on track 042° to BOT NDB climbing 4000.



OCA (OCH)	A	B	C	D
VOR/DME	700 (570)	700 (570)	700 (570)	700 (570)

DME DUS	3	4	5	6	7	8	9
DIST THR	1.9	2.9	3.9	4.9	5.9	6.9	7.9
ALTITUDE	780	1100	1420	1740	2060	2380	2690

Timing not authorized for defining the MAPt.

GS	kt	80	100	120	140	160	180
6.0 DME DUS - MAPt (4.1 NM)	MIN:SEC	3:05	2:28	2:03	1:45	1:32	1:22
Rate of descent (5.2%)	ft / MIN	420	530	640	740	850	960

Correction: Variation changes, OCA (OCH), missed approach procedure, tracks.