

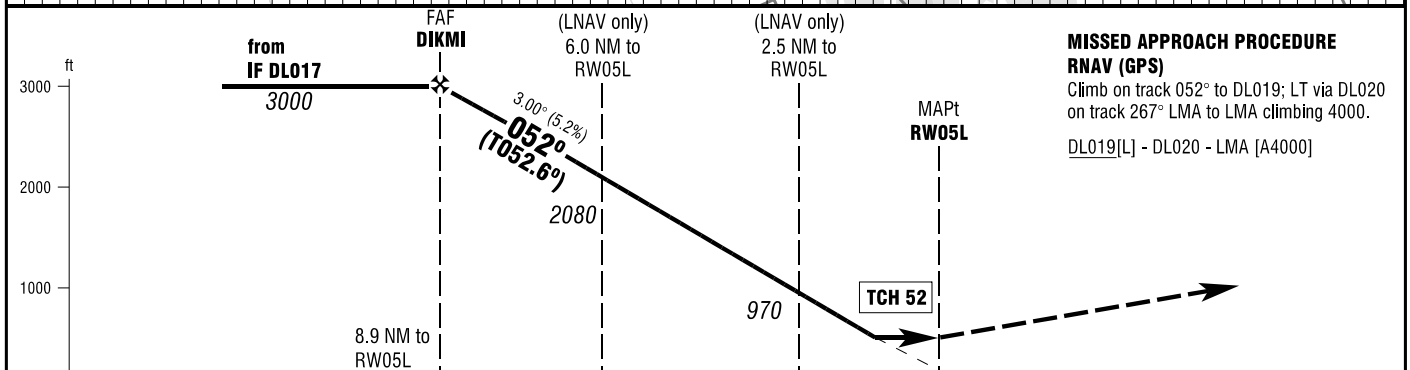
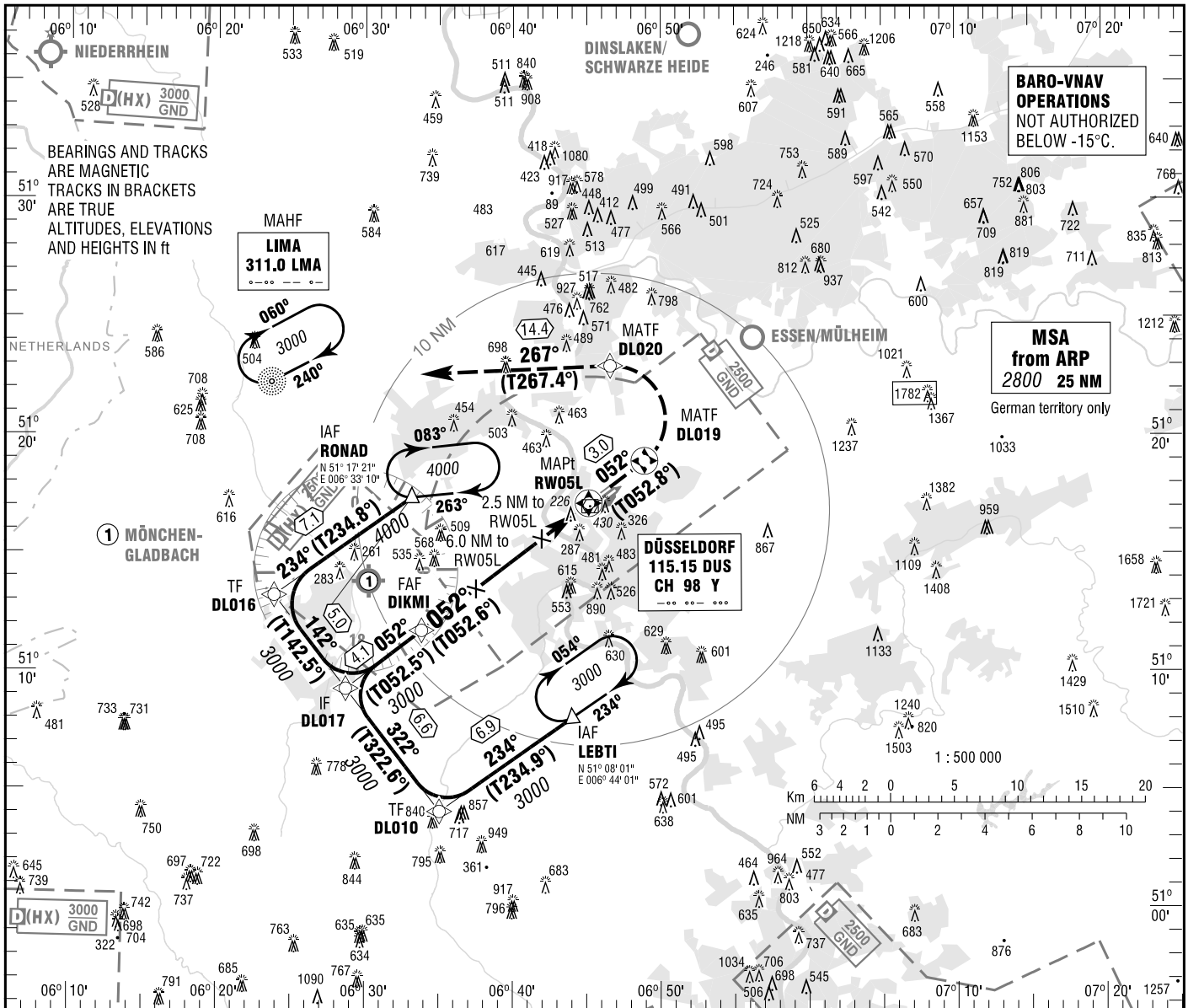
INSTRUMENT  
APPROACH  
CHART - ICAO

VAR 1° E

ELEV 147  
OCH RELATED TO  
THR 05L ELEV 116

|              |               |          |         |
|--------------|---------------|----------|---------|
| ATIS         | 123.775       | DIRECTOR | 128.650 |
| LANGEN RADAR | 115.150 (DUS) | TOWER    | 118.300 |
|              | 133.775       | GROUND   | 121.900 |
|              | 128.550       | DELIVERY | 121.775 |

DÜSSELDORF  
RNAV (GPS)  
RWY 05L



Correction: Variation change, OCA (OCH), missed approach procedure.

**MISSED APPROACH PROCEDURE  
RNAV (GPS)**

Climb on track 052° to DL019; LT via DL020 on track 267° LMA to LMA climbing 4000.

DL019[L] - DL020 - LMA [A4000]

| OCA (OCH)   | A            | B            | C            | D            |
|-------------|--------------|--------------|--------------|--------------|
| LNAV        | 600<br>(490) | 600<br>(490) | 600<br>(490) | 600<br>(490) |
| LNAV / VNAV | 480<br>(360) | 480<br>(360) | 480<br>(360) | 480<br>(360) |

| DIST THR / RW05L | 8    | 7    | 6    | 5    | 4    | 3    | 2   |
|------------------|------|------|------|------|------|------|-----|
| ALTITUDE         | 2720 | 2400 | 2080 | 1760 | 1450 | 1130 | 810 |

Timing not authorized for defining the MAPt.

| GS                     | kt       | 80   | 100  | 120  | 140  | 160  | 180  |
|------------------------|----------|------|------|------|------|------|------|
| DIKMI - RW05L (8.9 NM) | MIN:SEC  | 6:41 | 5:20 | 4:27 | 3:49 | 3:20 | 2:58 |
| Rate of descent (5.2%) | ft / MIN | 420  | 530  | 640  | 740  | 850  | 960  |