

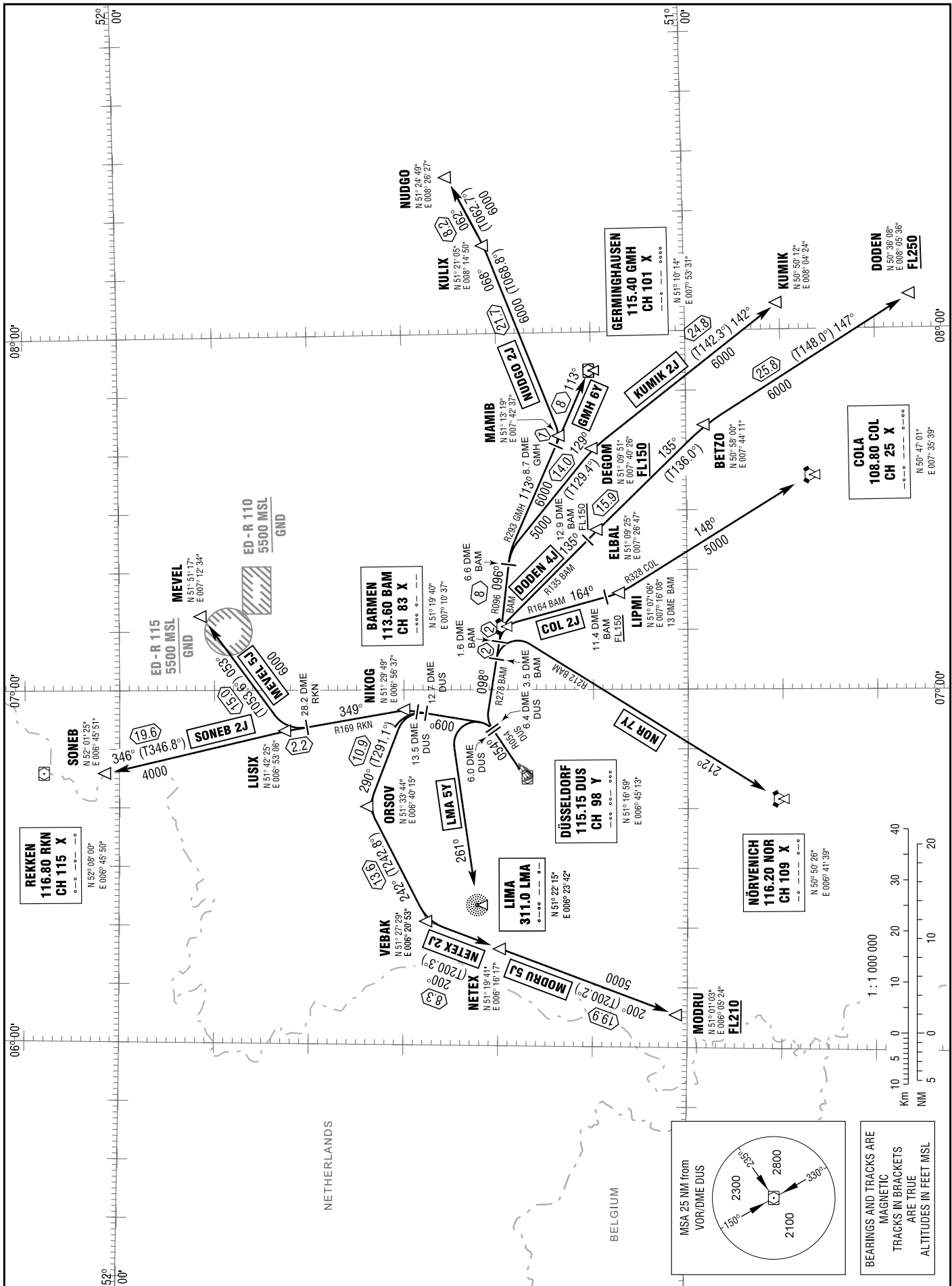
STANDARD DEPARTURE
CHART - INSTRUMENT
(SID)

TRANSITION
ALTITUDE 5000
VAR 1° E

ATIS 123.775
DELIVERY 121.775
GROUND 121.900

TOWER 118.300
LANGEN RADAR 133.775

DÜSSELDORF
RWY 05L



Correction: Communications.

