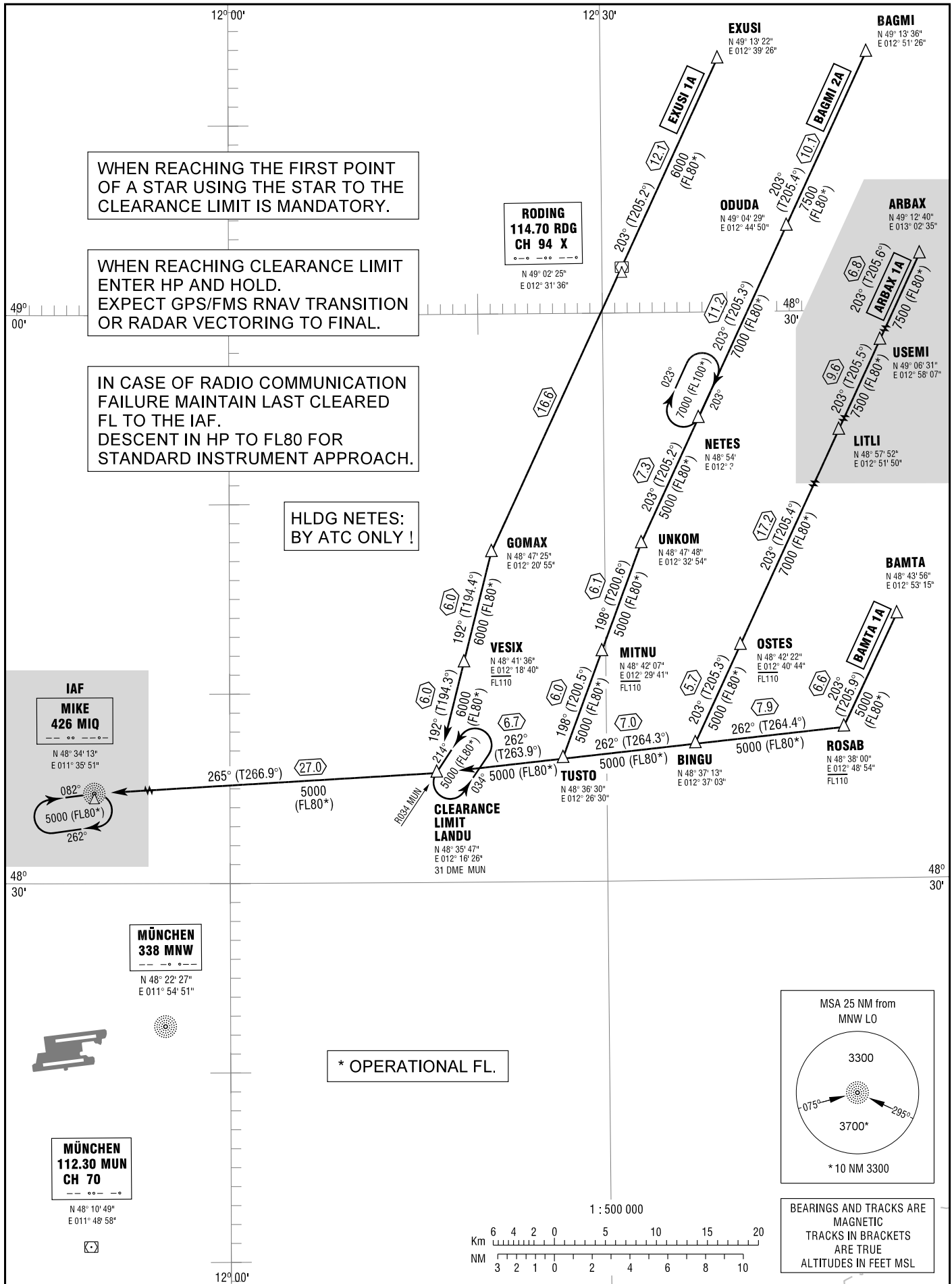


MÜNCHEN
RWY 08/26 NE

ATIS	123.125	DIRECTOR	118.825 (N)
ARRIVAL	128.025 (N)	TOWER	132.300 (S)
	120.775 (S)		118.700 (N)
			120.500 (S)

TRANSITION
ALTITUDE 5000
VAR 2° E

STANDARD ARRIVAL
CHART - INSTRUMENT
(STAR)



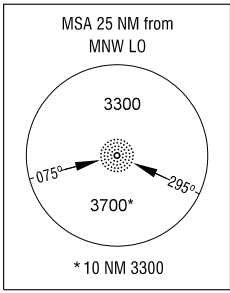
WHEN REACHING THE FIRST POINT OF A STAR USING THE STAR TO THE CLEARANCE LIMIT IS MANDATORY.

WHEN REACHING CLEARANCE LIMIT ENTER HP AND HOLD. EXPECT GPS/FMS RNAV TRANSITION OR RADAR VECTORIZING TO FINAL.

IN CASE OF RADIO COMMUNICATION FAILURE MAINTAIN LAST CLEARED FL TO THE IAF. DESCENT IN HP TO FL80 FOR STANDARD INSTRUMENT APPROACH.

HLDG NETES:
BY ATC ONLY !

* OPERATIONAL FL.



BEARINGS AND TRACKS ARE
MAGNETIC
TRACKS IN BRACKETS
ARE TRUE
ALTITUDES IN FEET MSL

Correction: NETES holding & note added.