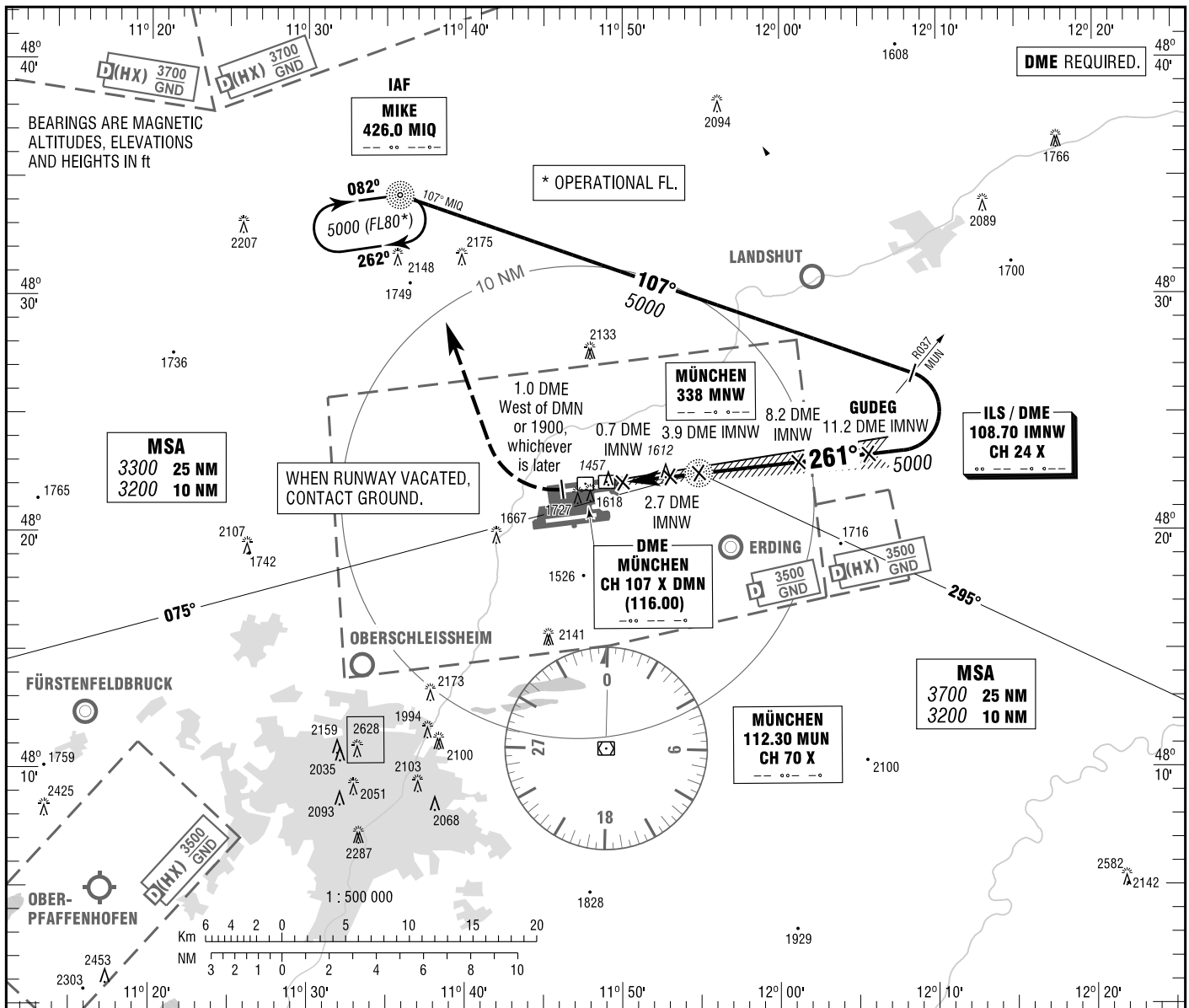


INSTRUMENT APPROACH CHART - ICAO

VAR 2° E
ELEV 1487
OCH RELATED TO THR 26R ELEV 1449

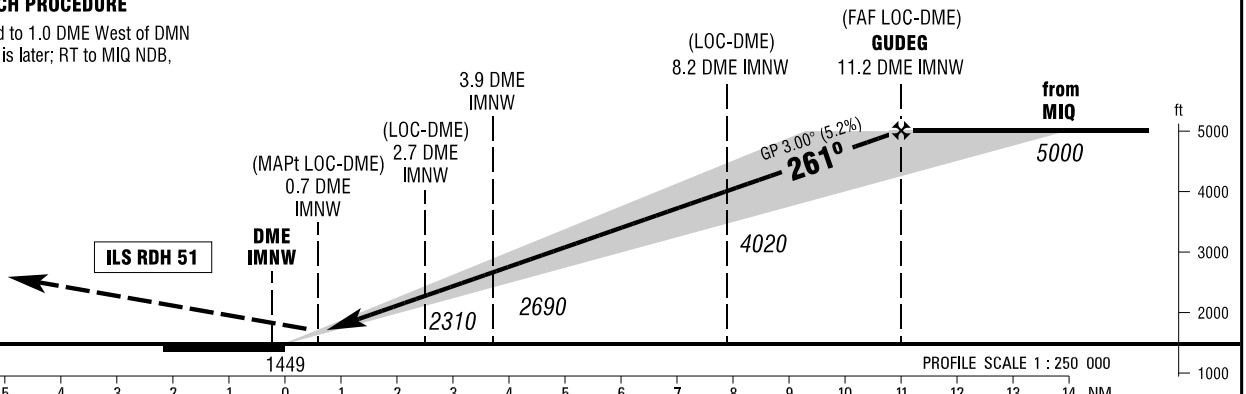
ATIS 123.125 GROUND 121.975 (N)
RADAR 123.900 (N) APRON 121.700 (E)
DIRECTOR 118.825 (N) 121.775 (W)
TOWER 118.700 (N) 121.925

MÜNCHEN
ILS CAT II & III or LOC
RWY 26R



MISSED APPROACH PROCEDURE

Climb straight ahead to 1.0 DME West of DMN or 1900, whichever is later; RT to MIQ NDB, climbing to 5000.



OCA (OCH)	A	B	C	D	D _i
ILS/DME CAT I	1589 (140)	1598 (149)	1608 (159)	1618 (169)	
ILS/DME CAT II	1500 (51)	1516 (67)	1530 (81)	1543 (94)	
LOC-DME	1860 (410)	1860 (410)	1860 (410)	1860 (410)	

	2	3	4	5	6	7	8	9	10	11
DME IMNW										
DIST THR	1.8	2.8	3.8	4.8	5.8	6.8	7.8	8.8	9.8	10.8
ALTITUDE	2080	2400	2710	3030	3350	3670	3990	4310	4630	4940

LOC-DME: Timing not authorized for defining the MAPt.

GS	kt	80	100	120	140	160	180
3.9 DME IMNW - THR (3.7 NM)	MIN:SEC	2:47	2:13	1:51	1:35	1:23	1:14
Rate of descent (5.2%)	ft / MIN	420	530	640	740	850	960

CAT IIIA AND CAT IIIB (MNM RVR 75M) APPROVED.

Correction: Procedure.