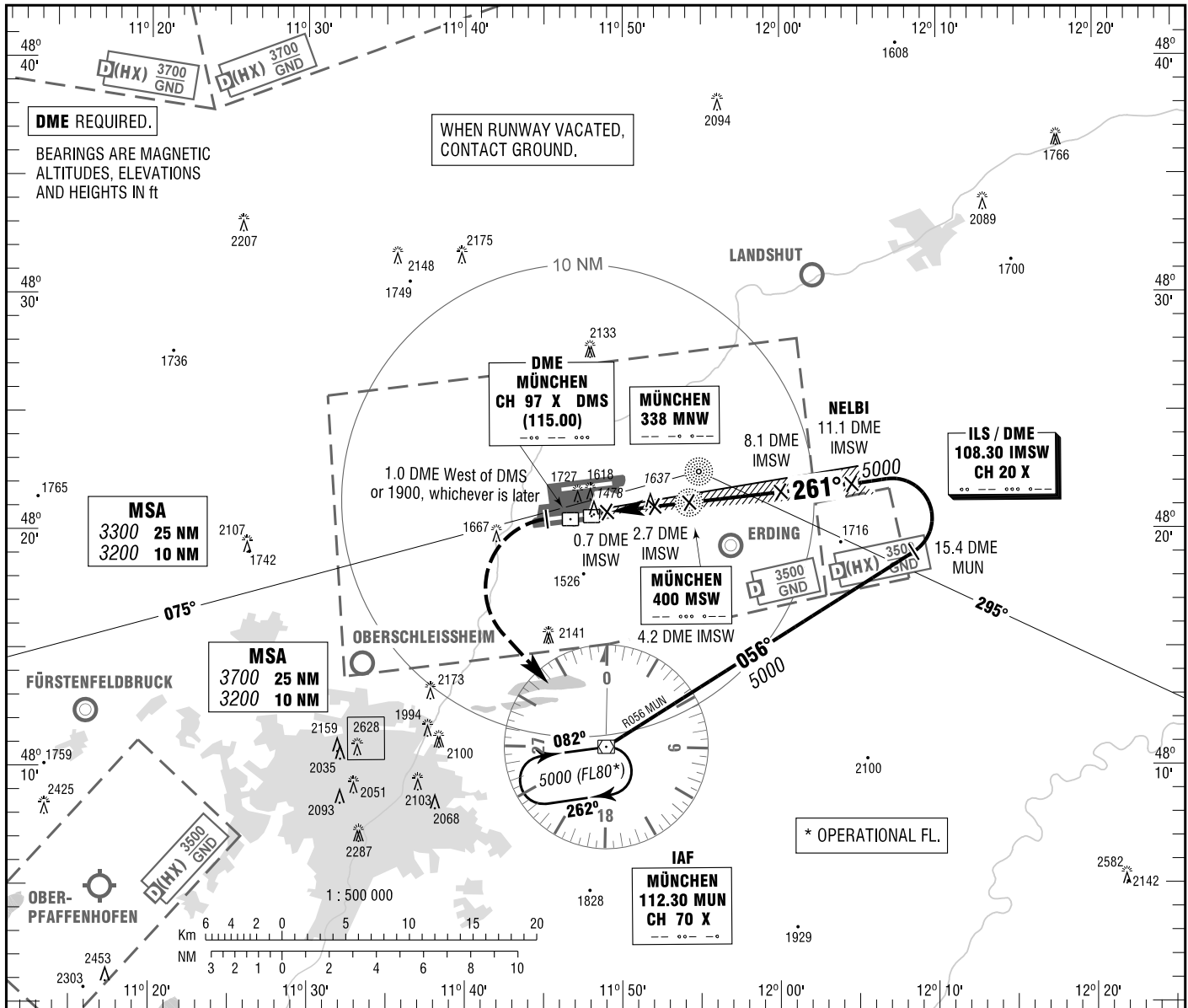


MÜNCHEN  
ILS CAT II & III or LOC  
RWY 26L

ATIS	123.125	GROUND	121.825 (S)
RADAR	127.950 (S)	APRON	121.700 (E)
DIRECTOR	132.300 (S)		121.775 (W)
TOWER	120.500 (S)		121.925

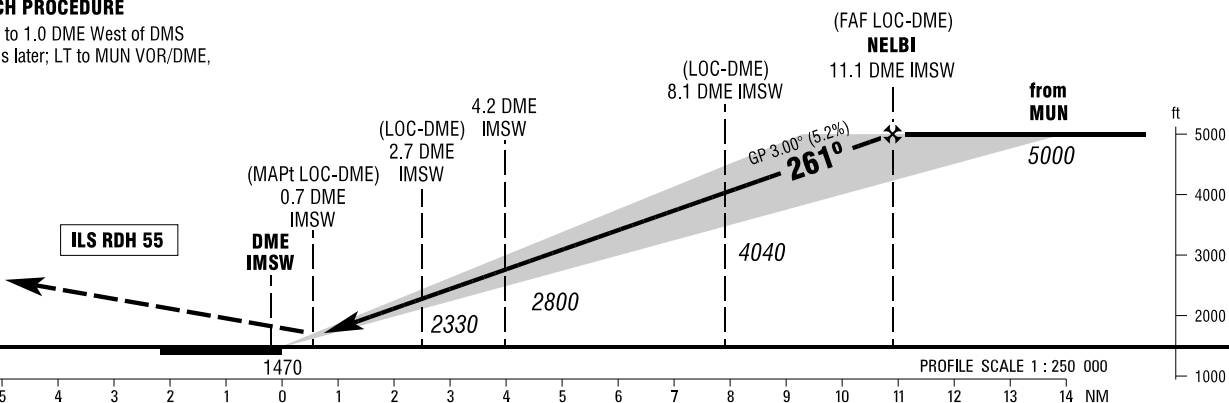
ELEV 1487  
OCH RELATED TO VAR 2° E  
THR 26L ELEV 1470

INSTRUMENT  
APPROACH  
CHART - ICAO



**MISSED APPROACH PROCEDURE**

Climb straight ahead to 1.0 DME West of DMS or 1900, whichever is later; LT to MUN VOR/DME, climbing to 5000.



OCA (OCH)	A	B	C	D	D <sub>t</sub>
ILS/DME CAT I	1609 (139)	1619 (149)	1629 (159)	1639 (169)	
ILS/DME CAT II	1521 (51)	1537 (67)	1550 (80)	1563 (93)	
LOC-DME	1890 (420)	1890 (420)	1890 (420)	1890 (420)	

DME IMSW	2	3	4	5	6	7	8	9	10	11
DIST THR	1.8	2.8	3.8	4.8	5.8	6.8	7.8	8.8	9.8	10.8
ALTITUDE	2100	2420	2740	3060	3380	3700	4010	4330	4650	4970

LOC-DME: Timing not authorized for defining the MAPt.

GS	kt	80	100	120	140	160	180
4.2 DME IMSW - THR (4.0 NM)	MIN:SEC	3:00	2:24	2:00	1:43	1:30	1:20
Rate of descent (5.2%)	ft / MIN	420	530	640	740	850	960

CAT IIIA AND CAT IIIB (MNM RVR 75M) APPROVED.

Correction: Procedure.