

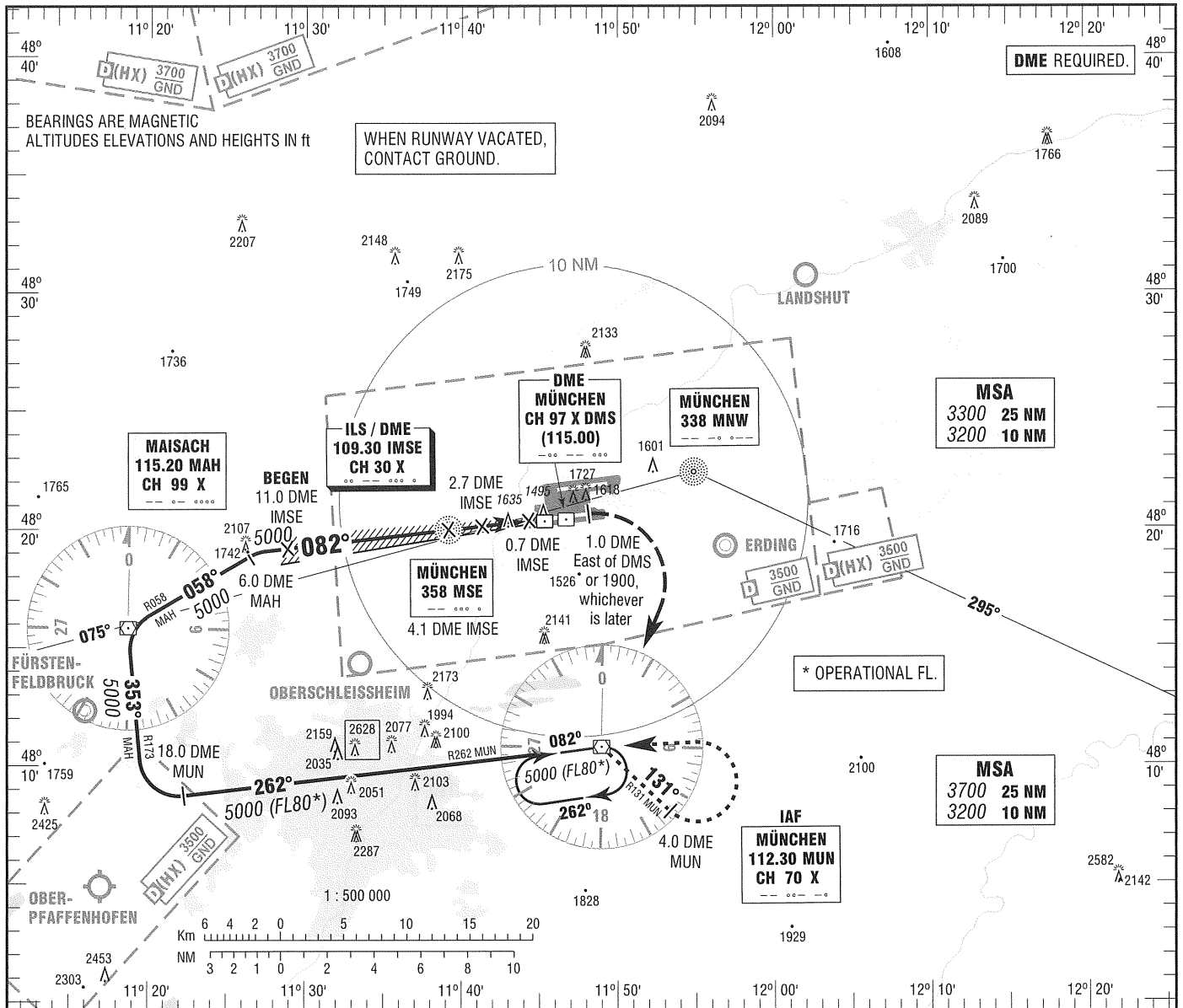
INSTRUMENT  
APPROACH  
CHART - ICAO

VAR 2° E

ELEV 1487  
OCH RELATED TO  
THR 08R ELEV 1486

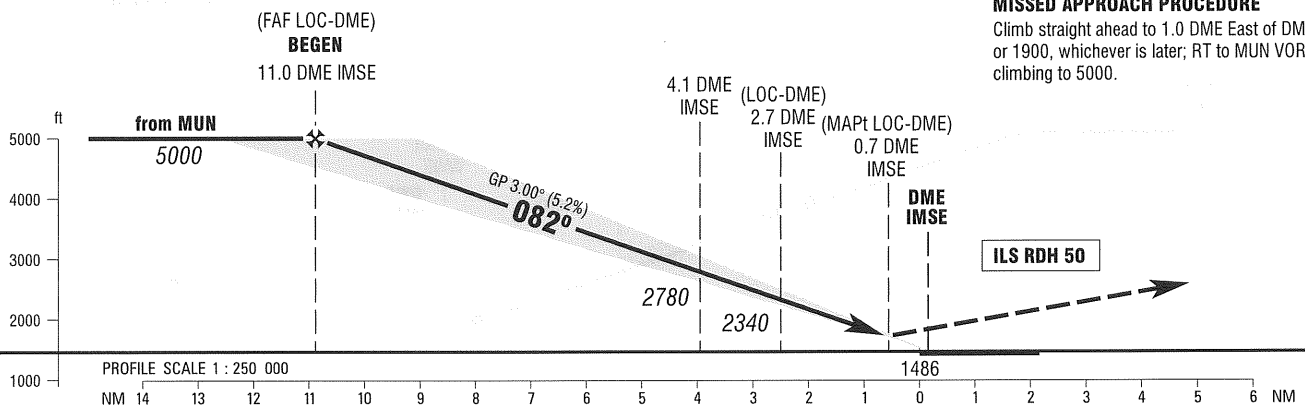
ATIS	123.125	GROUND	121.825
RADAR	127.950	APRON (W)	121.775
DIRECTOR (S)	132.300	APRON (E)	121.700
TOWER	120.500		

MÜNCHEN  
ILS CAT II & III or LOC  
RWY 08R



**MISSED APPROACH PROCEDURE**

Climb straight ahead to 1.0 DME East of DMS or 1900, whichever is later; RT to MUN VOR/DME climbing to 5000.



OCA (OCH)	A	B	C	D	D <sub>t</sub>
ILS/DME CAT I	1626 (140)	1636 (150)	1646 (160)	1656 (170)	
ILS/DME CAT II	1538 (52)	1554 (68)	1567 (81)	1580 (94)	
LOC-DME	1890 (400)	1890 (400)	1890 (400)	1890 (400)	

DME IMSE	10	9	8	7	6	5	4	3	2
DIST THR	9.8	8.8	7.8	6.8	5.8	4.8	3.8	2.8	1.8
ALTITUDE	4660	4340	4020	3710	3390	3070	2750	2430	2110

Timing not authorized for defining the MAPt.

GS	kt	80	100	120	140	160	180
4.1 DME IMSE - THR (4.0 NM)	MIN:SEC	3:00	2:24	2:00	1:43	1:30	1:20
Rate of descent (5.2%)	ft / MIN	420	530	640	740	850	960

CAT IIIA AND CAT IIIB (MNM RVR 75M) APPROVED.

Correction: Procedure.