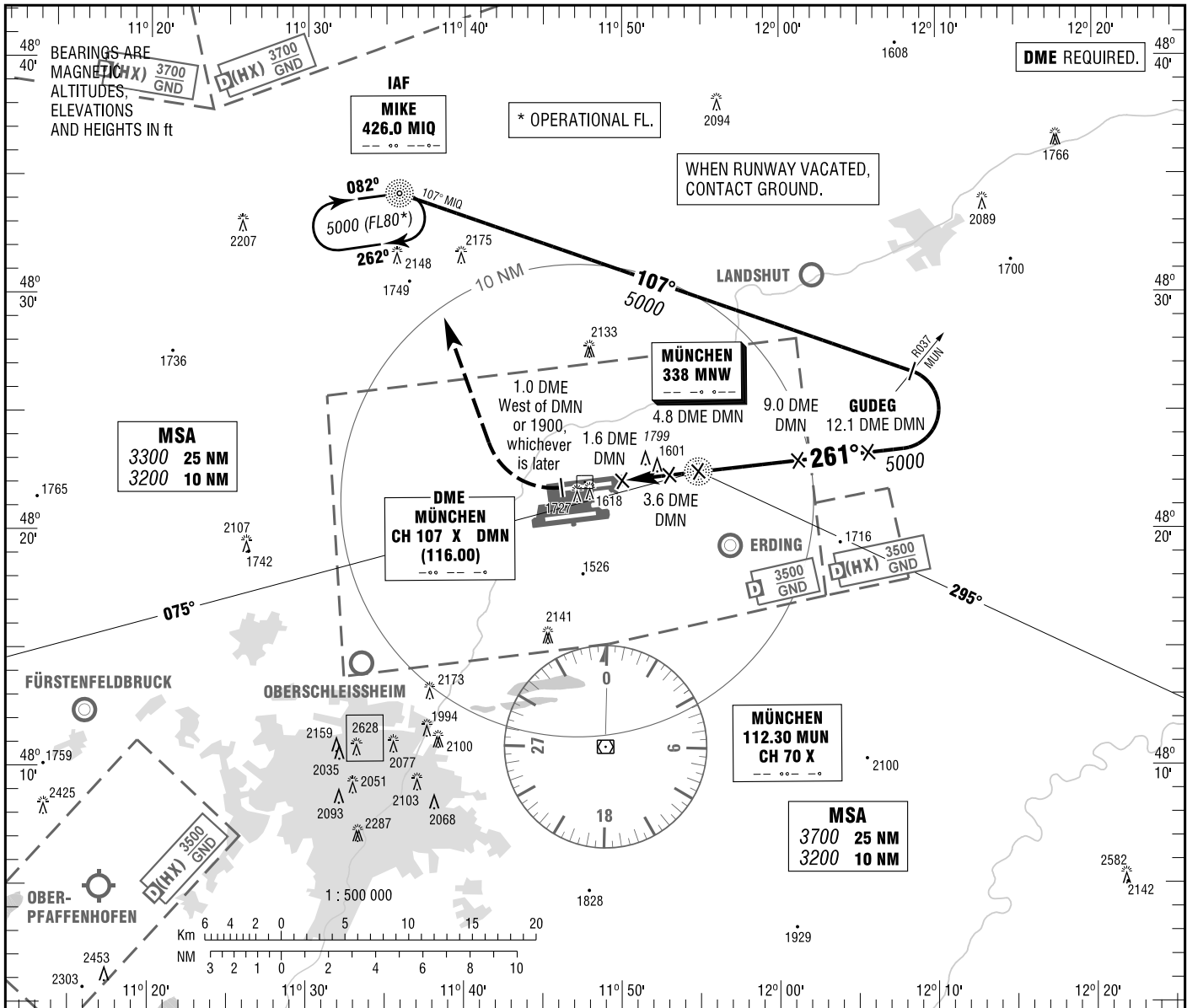


**INSTRUMENT APPROACH CHART - ICAO**

VAR 2° E  
ELEV 1487  
OCH RELATED TO THR 26R ELEV 1449

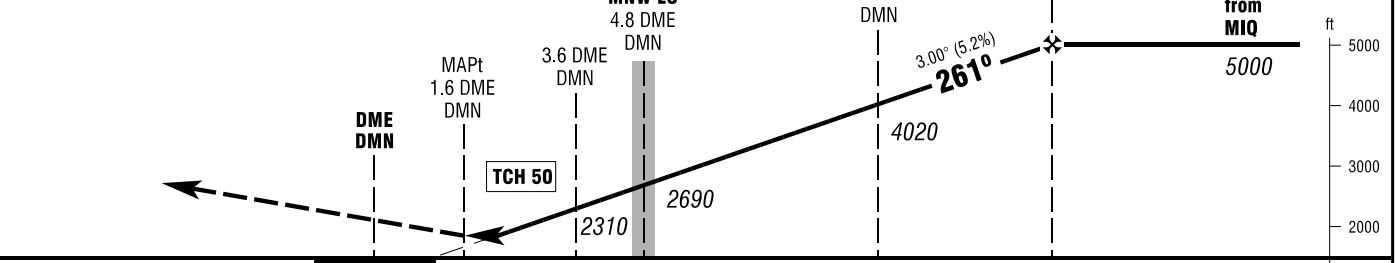
ATIS	123.125	GROUND	121.975 (N)
RADAR	123.900 (N)	APRON	121.700 (E)
DIRECTOR	118.825 (N)		121.775 (W)
TOWER	118.700 (N)		121.925

**MÜNCHEN NDB RWY 26R**



**MISSED APPROACH PROCEDURE**

Climb straight ahead to 1.0 DME West of DMN or 1900, whichever is later; RT to MIQ NDB climbing to 5000.



PROFILE SCALE 1 : 250 000

OCA (OCH)	A	B	C	D
NDB-DME	2050 (600)	2050 (600)	2050 (600)	2050 (600)

	3	4	5	6	7	8	9	10	11	12
DME DMN										
DIST THR	1.9	2.9	3.9	4.9	5.9	6.9	7.9	8.9	9.9	10.9
ALTITUDE	2110	2430	2750	3060	3380	3700	4020	4340	4660	4970

Timing not authorized for defining the MAPt.

GS	kt	80	100	120	140	160	180
MNW - 1.6 DME DMN (3.2 NM)	MIN:SEC	2:24	1:55	1:36	1:22	1:12	1:04
Rate of descent (5.2%)	ft / MIN	420	530	640	740	850	960

Correction: Procedure.