

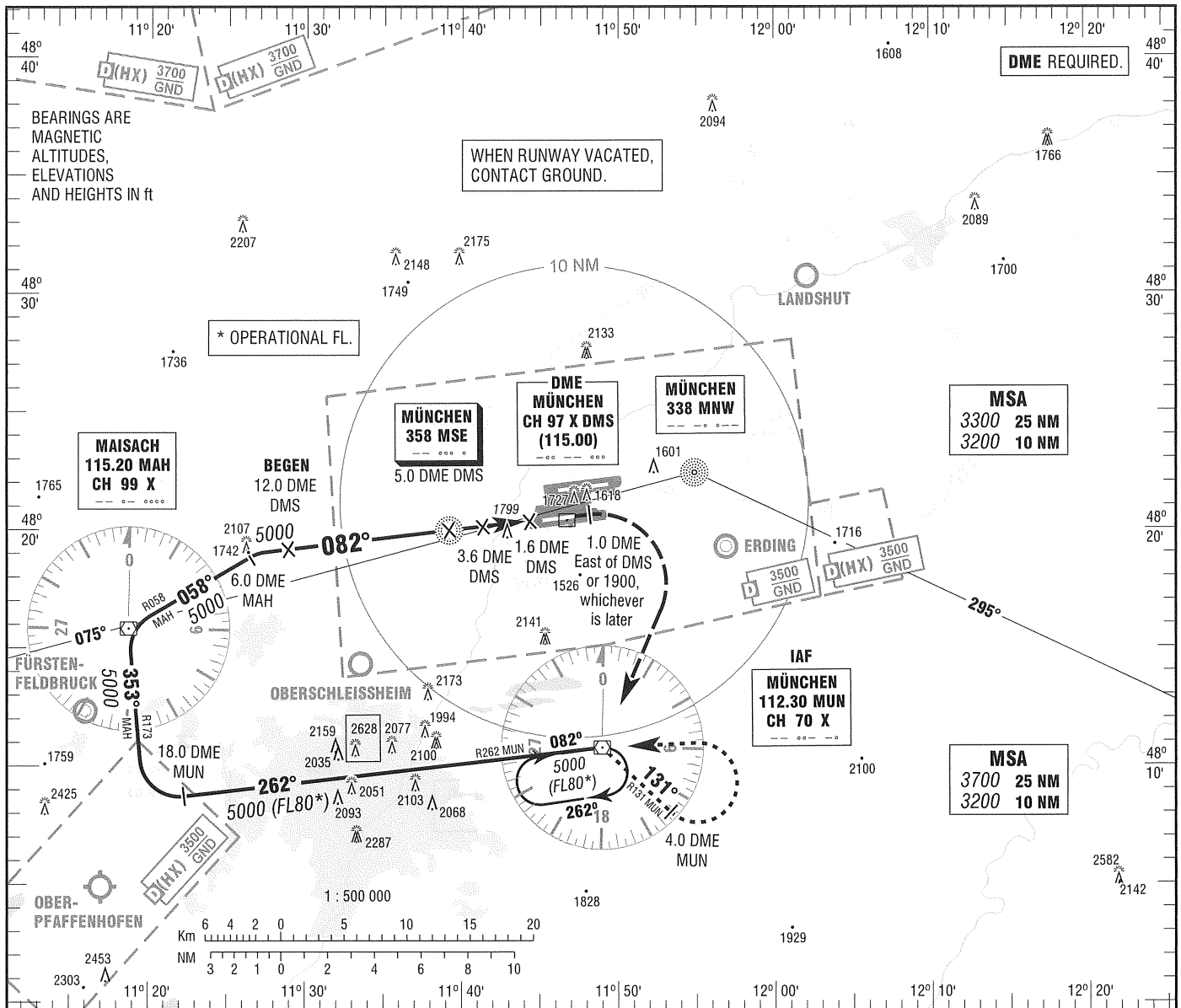
INSTRUMENT
APPROACH
CHART - ICAO

VAR 2° E

ELEV 1487
OCH RELATED TO
THR 08R ELEV 1486

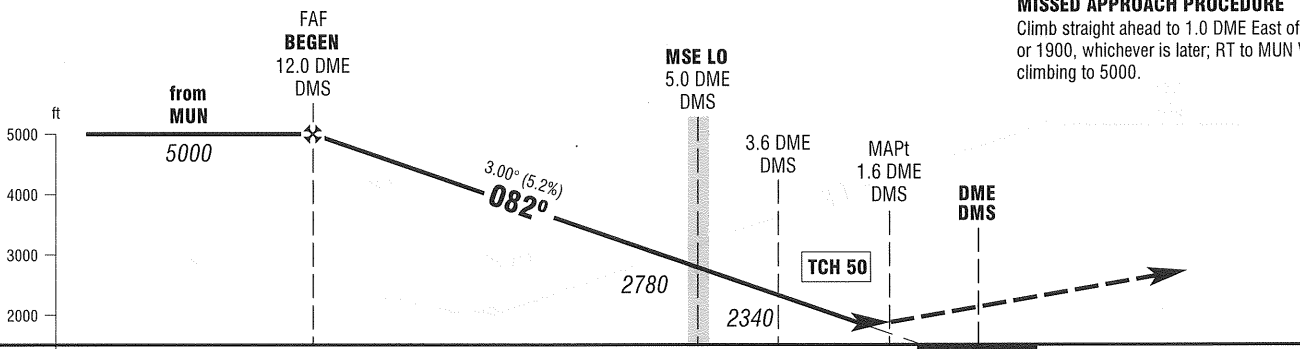
ATIS	123.125	GROUND	121.825
RADAR	127.950	APRON (W)	121.775
DIRECTOR (S)	132.300	APRON (E)	121.700
TOWER	120.500		

MÜNCHEN
NDB
RWY 08R



MISSED APPROACH PROCEDURE

Climb straight ahead to 1.0 DME East of DMS or 1900, whichever is later; RT to MUN VOR/DME climbing to 5000.



OCA (OCH)	A	B	C	D
NDB-DME	2050 (560)	2050 (560)	2050 (560)	2050 (560)

DME DMS	11	10	9	8	7	6	5	4	3
DIST THR	9.9	8.9	7.9	6.9	5.9	4.9	3.9	2.9	1.9
ALTITUDE	4690	4370	4060	3740	3420	3100	2780	2460	2150

Timing not authorized for defining the MAPt.

GS	kt	80	100	120	140	160	180
MSE - 1.6 DME DMS (3.4 NM)	MIN:SEC	2:33	2:02	1:42	1:27	1:17	1:08
Rate of descent (5.2%)	ft / MIN	420	530	640	740	850	960

Correction: Crossing altitude 3.6 DME DMS.