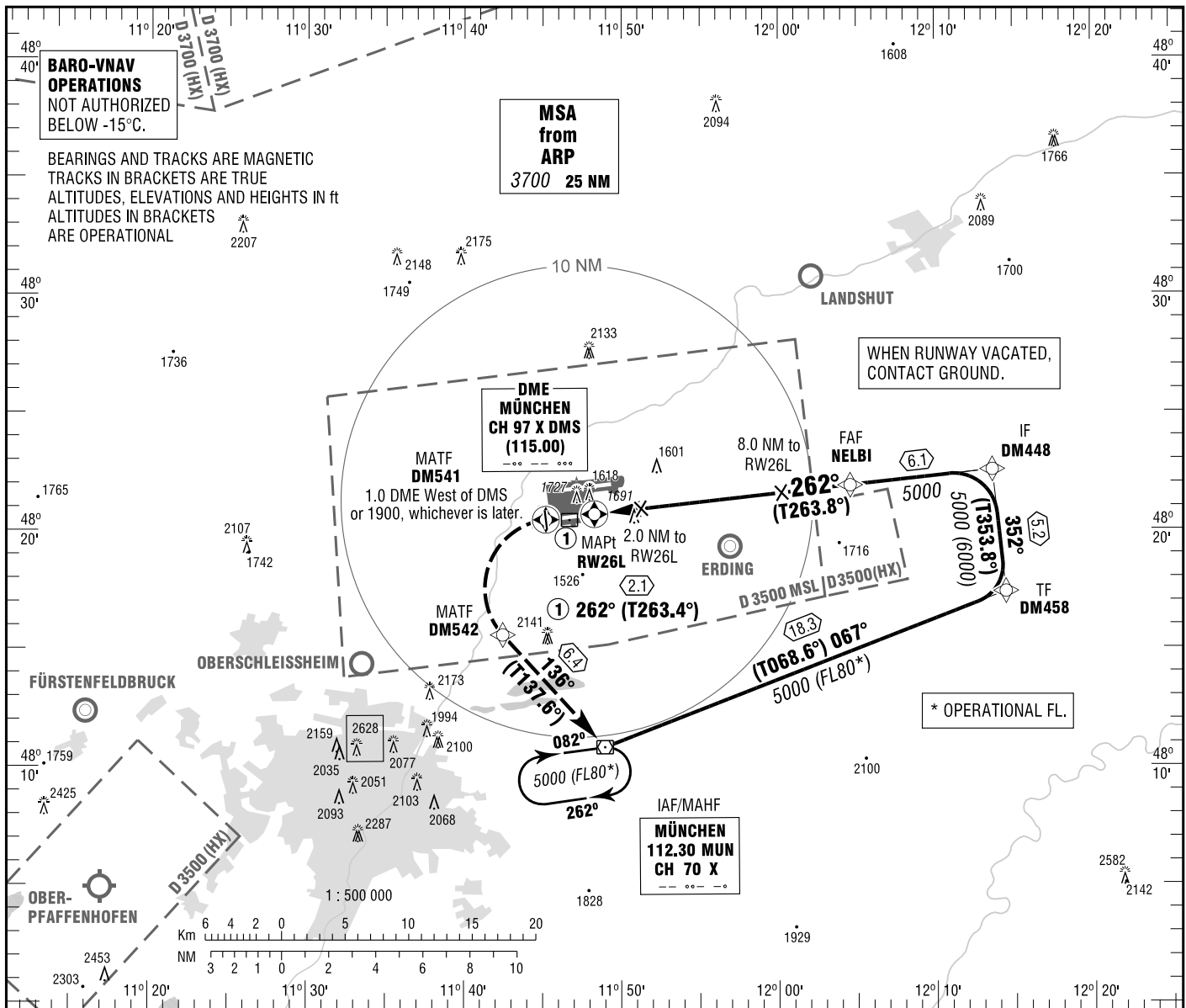


MÜNCHEN
RNAV (GPS)
RWY 26L

ATIS	123.125	GROUND	121.825
RADAR	127.950	APRON (W)	121.775
DIRECTOR (S)	132.300	APRON (E)	121.700
TOWER	120.500		

ELEV 1487
OCH RELATED TO VAR 2° E
THR 26L ELEV 1470

INSTRUMENT
APPROACH
CHART - ICAO



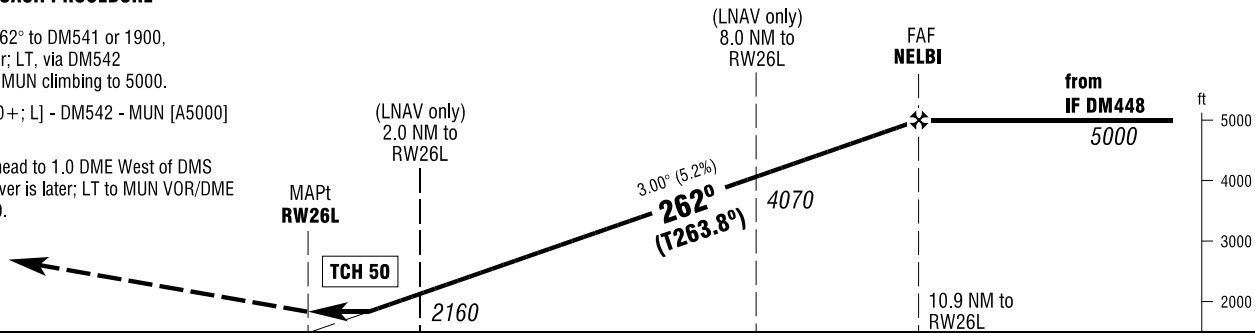
MISSED APPROACH PROCEDURE

RNAV (GPS)
Climb on track 262° to DM541 or 1900, whichever is later; LT, via DM542 on track 136° to MUN climbing to 5000.

DM541 - [A1900+; L] - DM542 - MUN [A5000]

NON-RNAV

Climb straight ahead to 1.0 DME West of DMS or 1900, whichever is later; LT to MUN VOR/DME climbing to 5000.



OCA (OCH)	A	B	C	D
LNAV	1980 (510)	1980 (510)	1980 (510)	1980 (510)
LNAV / VNAV	1920 (450)	1920 (450)	1920 (450)	1920 (450)

DIST THR / RW26L	2	3	4	5	6	7	8	9	10
ALTITUDE	2160	2480	2800	3120	3440	3750	4070	4390	4710

Timing not authorized for defining the MAPt.

GS	kt	80	100	120	140	160	180
NELBI - RW26L (10.9 NM)	MIN:SEC	8:11	6:32	5:27	4:40	4:05	3:38
Rate of descent (5.2%)	ft / MIN	420	530	640	740	850	960

Correction: Communications.