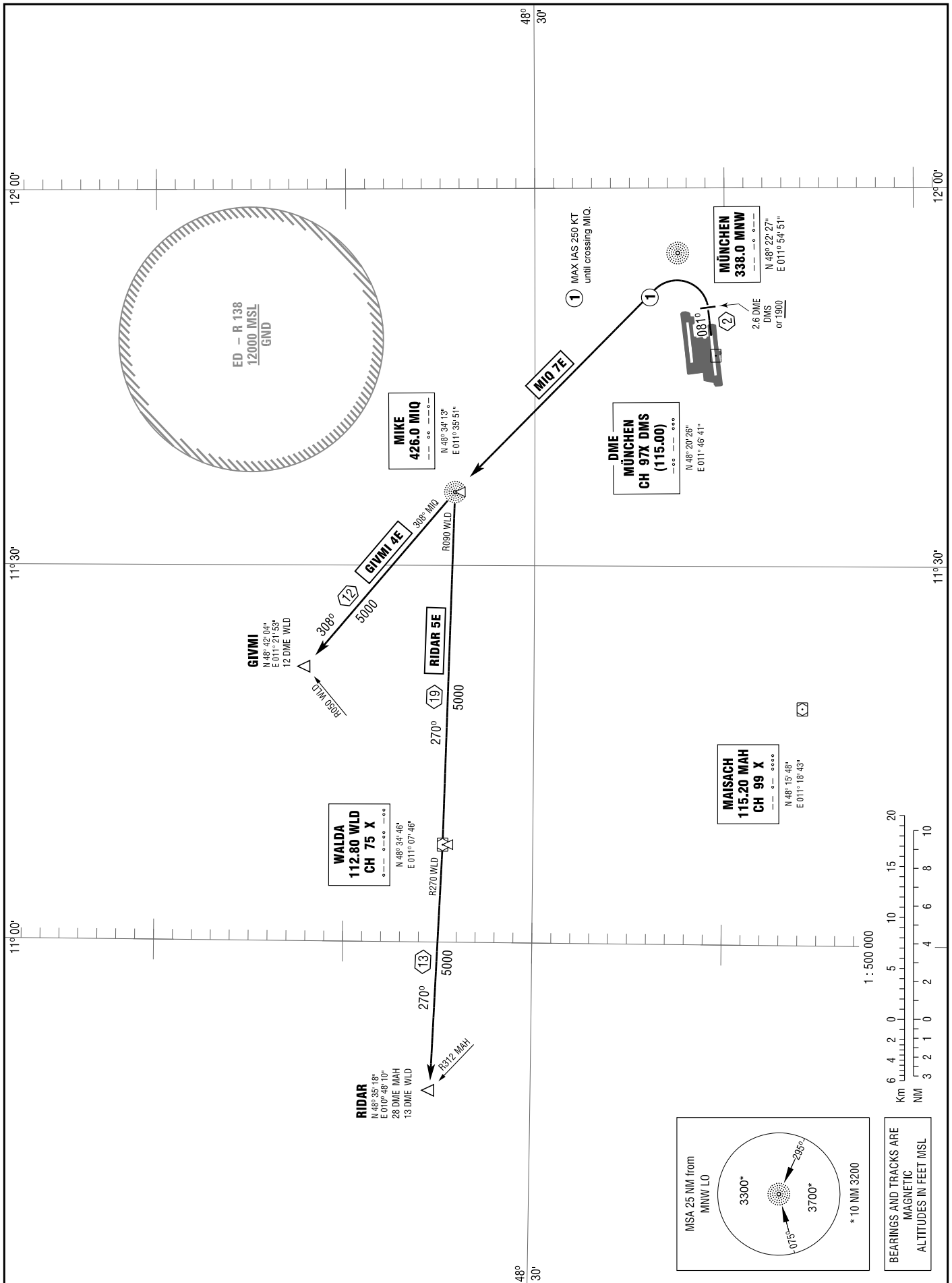


STANDARD DEPARTURE  
CHART - INSTRUMENT  
(SID)

TRANSITION  
ALTITUDE 5000  
VAR 2° E

ATIS	123.125	APRON	121.775 (W)	TOWER	118.700 (N)
DELIVERY	121.725		121.925	RADAR	123.900 (N)
APRON	121.700 (E)	GROUND	121.975 (N)		

MÜNCHEN (NORTH)  
RWY 08R



Correction: Procedure.