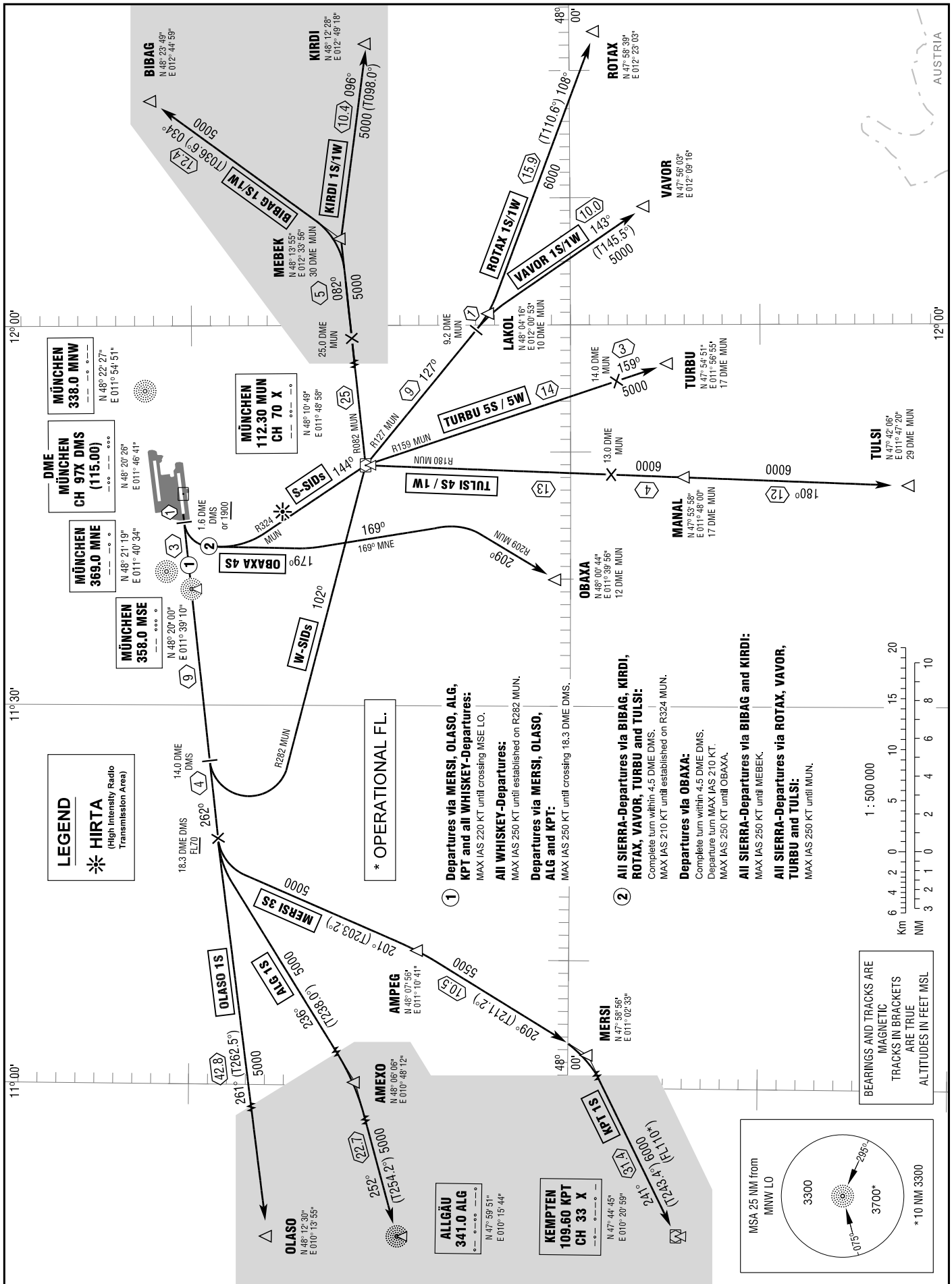


STANDARD DEPARTURE  
CHART - INSTRUMENT  
(SID)

TRANSITION  
ALTITUDE 5000  
VAR 2° E

ATIS	123.125	APRON (E)	121.700	TOWER	120.500
DELIVERY	121.725	APRON (W)	121.925	RADAR	127.950
			GROUND	121.975	

MÜNCHEN (SOUTH)  
RWY 26L



Correction: Departures via MEBEK withdrawn, via KIRDI added.