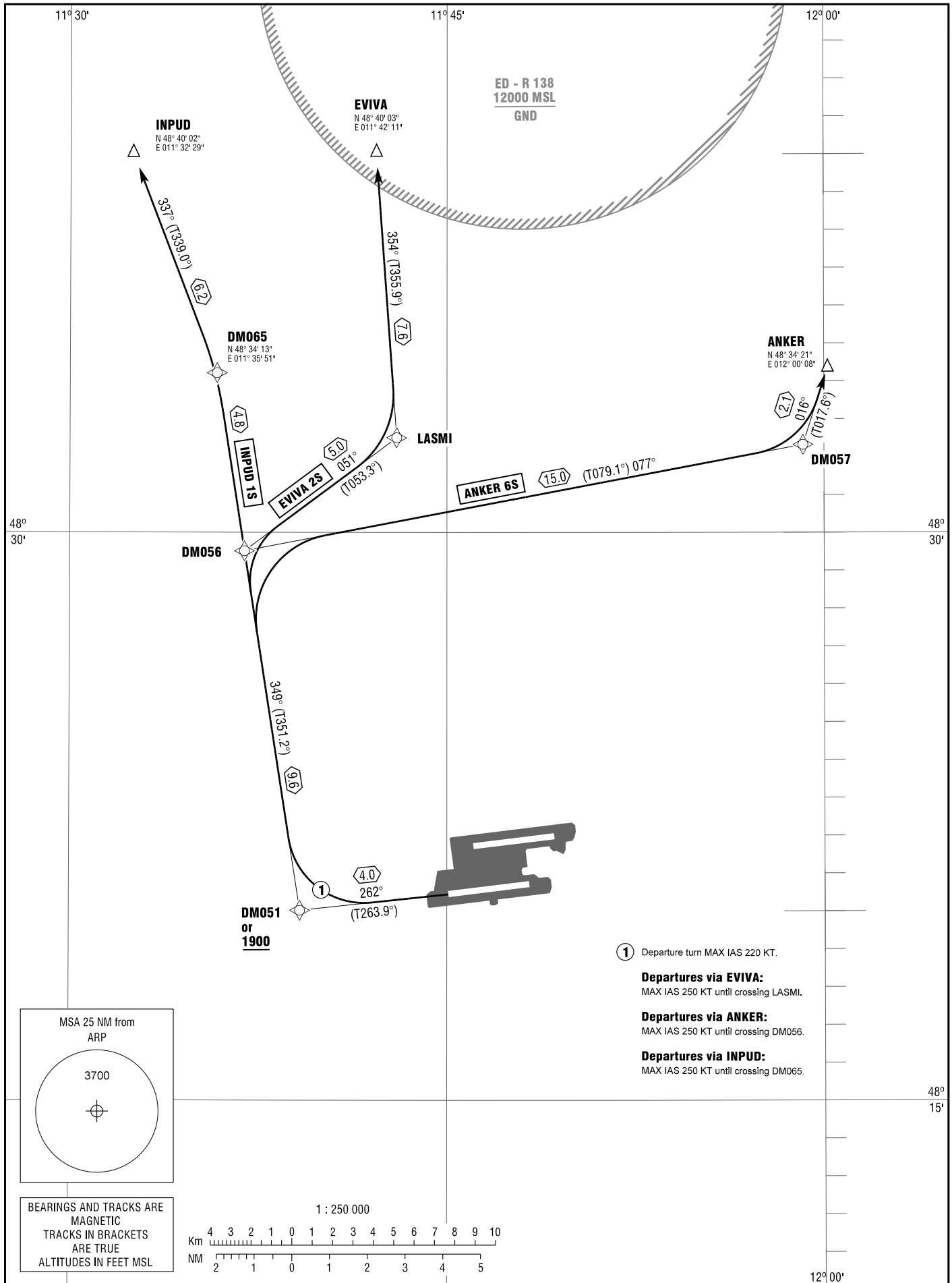


MÜNCHEN  
 RWY 26L

ATIS	123.125	APRON (E)	121.700	TOWER	120.500
DELIVERY	121.725		121.925	RADAR	123.900
APRON (W)	121.775	GROUND	121.975		

TRANSITION  
 ALTITUDE 5000  
 VAR 2° E

STANDARD DEPARTURE  
 CHART - INSTRUMENT  
 RNAV (GPS)



- ① Departure turn MAX IAS 220 KT.
- Departures via EVIVA:**  
 MAX IAS 250 KT until crossing LASMI.
- Departures via ANKER:**  
 MAX IAS 250 KT until crossing DM056.
- Departures via INPUD:**  
 MAX IAS 250 KT until crossing DM065.

Correction: Procedure.