

**INSTRUMENT  
APPROACH  
CHART - ICAO**

VAR 2° E

ELEV 1046  
OCH RELATED TO  
THR 28 ELEV 1046

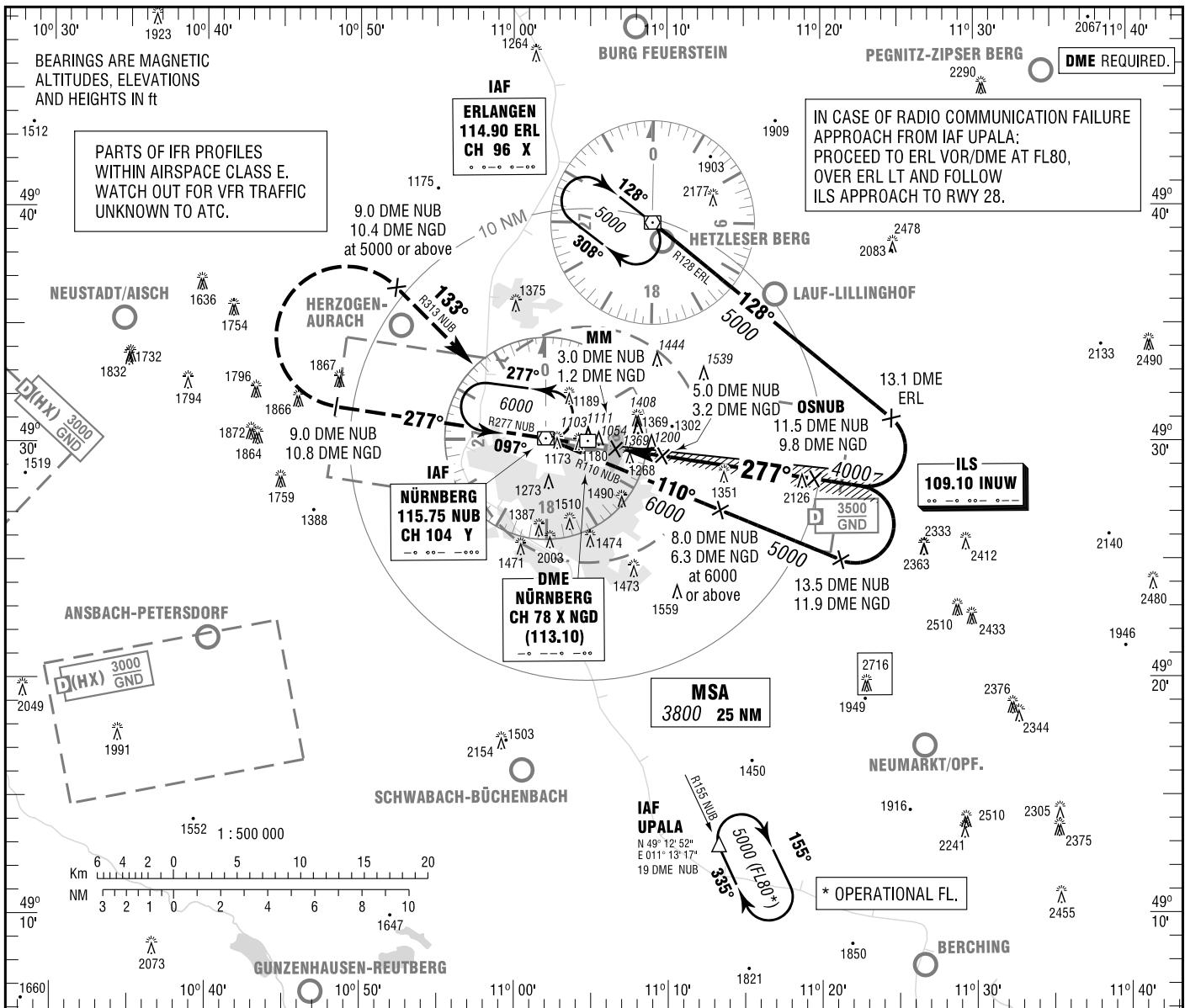
ATIS  
MÜNCHEN RADAR  
DIRECTOR

123.075  
129.525  
119.475

TOWER  
GROUND  
APRON

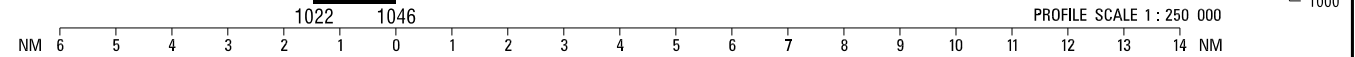
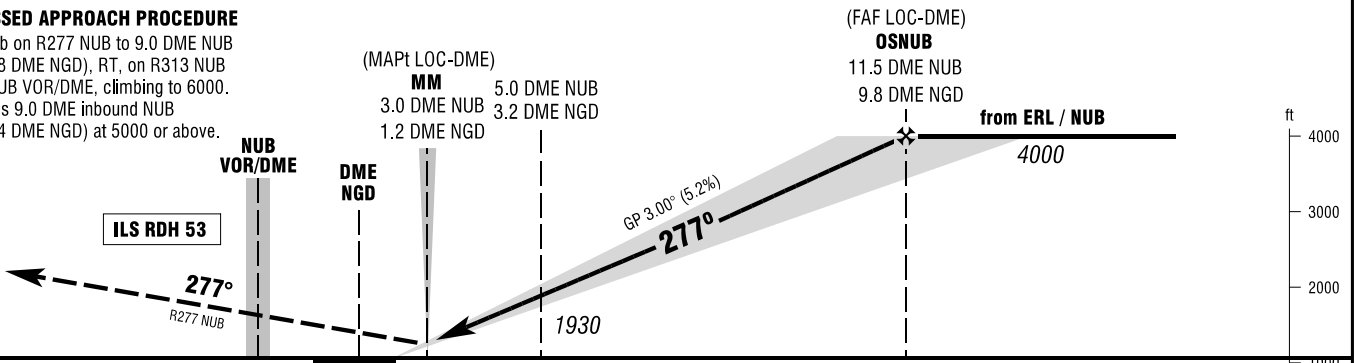
118.300  
118.100  
121.800

**NÜRNBERG**  
ILS CAT II & III or LOC Z  
RWY 28



**MISSED APPROACH PROCEDURE**

Climb on R277 NUB to 9.0 DME NUB  
(10.8 DME NGD), RT, on R313 NUB  
to NUB VOR/DME, climbing to 6000.  
Cross 9.0 DME inbound NUB  
(10.4 DME NGD) at 5000 or above.



OCA (OCH)	A	B	C	D
ILS-DME CAT I	1200 (154)	1210 (164)	1227 (181)	1237 (191)
ILS-DME CAT II	1097 (51)	1113 (67)	1127 (81)	1140 (94)
LOC-DME	1450 (410)	1450 (410)	1450 (410)	1450 (410)
CIRCLING * OCH RELATED TO AD ELEV	1670 (620)	1720 (670)	1840 (800)	1940 (890)

DME NUB	4	5	6	7	8	9	10	11
DIST THR	1.6	2.6	3.6	4.6	5.6	6.6	7.6	8.6
ALTITUDE	1610	1930	2250	2570	2890	3210	3520	3840

**LOC-DME:** Timing not authorized for defining the MAPt.

GS	kt	80	100	120	140	160	180
5.0 DME NUB - THR (2.6 NM)	MIN:SEC	1:57	1:34	1:18	1:07	0:59	0:52
Rate of descent (5.2%)	ft / MIN	420	530	640	740	850	960

\*NORTH OF AERODROME ONLY. CAT IIIA AND CAT IIIB (MNM RVR 75M) APPROVED.

Correction: MSA, OCA(H) obstacles & values, note added.