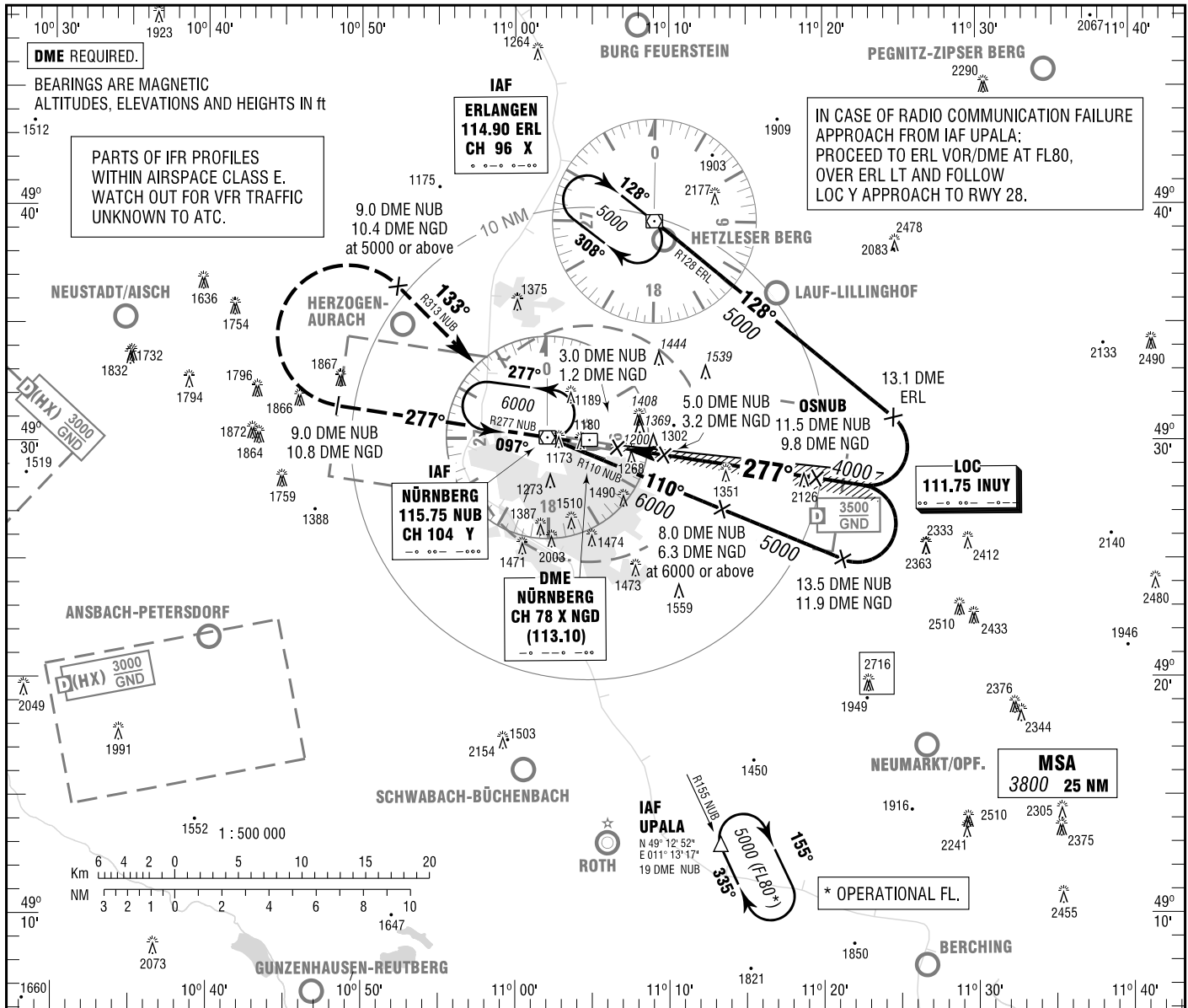


NÜRNBERG
LOC Y
RWY 28

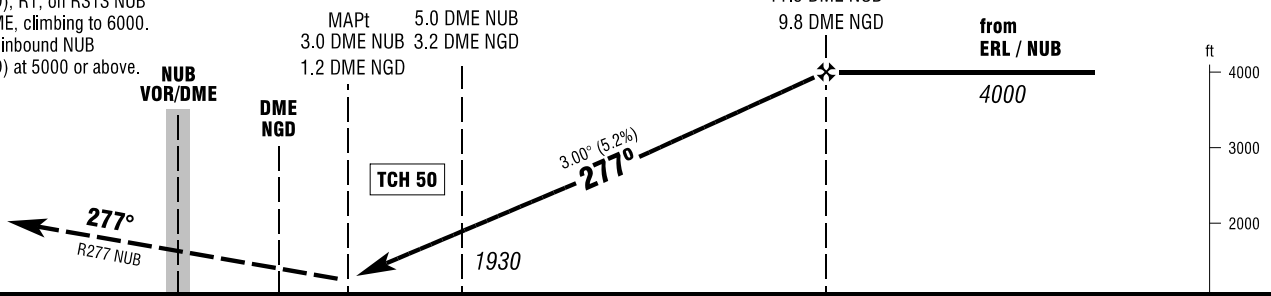
ATIS	123.075	TOWER	118.300	ELEV	1046
MÜNCHEN RADAR	129.525	GROUND	118.100	OCH RELATED TO	VAR 2° E
DIRECTOR	119.475	APRON	121.800	THR 28	ELEV 1046

**INSTRUMENT
APPROACH
CHART - ICAO**



MISSED APPROACH PROCEDURE

Climb on R277 NUB to 9.0 DME NUB
(10.8 DME NGD), RT, on R313 NUB
to NUB VOR/DME, climbing to 6000.
Cross 9.0 DME inbound NUB
(10.4 DME NGD) at 5000 or above.



OCA (OCH)	A	B	C	D
LOC-DME	1450 (410)	1450 (410)	1450 (410)	1450 (410)
CIRCLING* OCH RELATED TO AD ELEV	1670 (620)	1720 (670)	1840 (800)	1940 (890)

DME NUB	4	5	6	7	8	9	10	11
DIST THR	1.6	2.6	3.6	4.6	5.6	6.6	7.6	8.6
ALTITUDE	1610	1930	2250	2570	2890	3210	3520	3840

Timing not authorized for defining the MAPt.

GS	kt	80	100	120	140	160	180
5.0 DME NUB - 3.0 DME NUB (2.0 NM)	MIN:SEC	1:30	1:12	1:00	0:51	0:45	0:40
Rate of descent (5.2%)	ft / MIN	420	530	640	740	850	960

*NORTH OF AERODROME ONLY.

Correction: LOC freq.